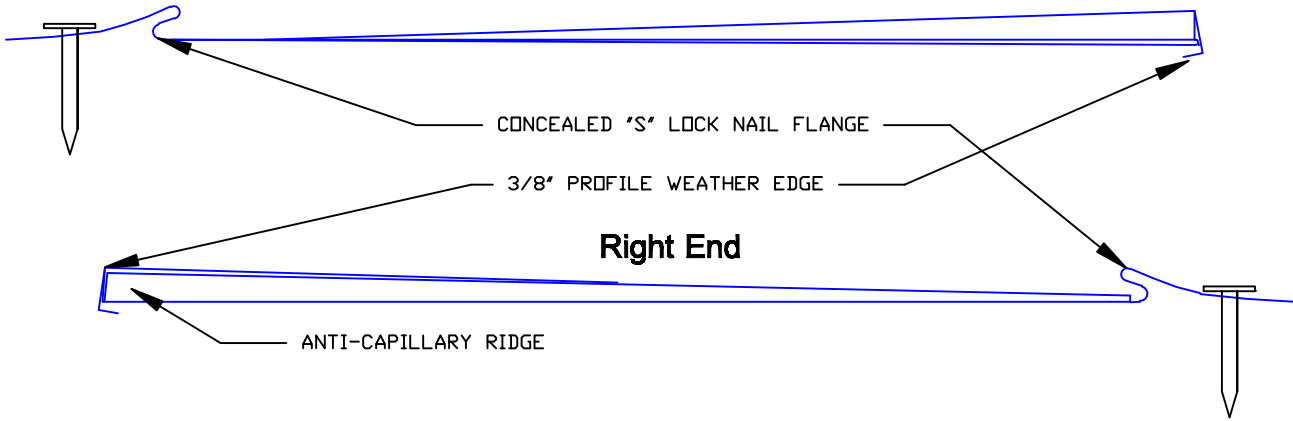
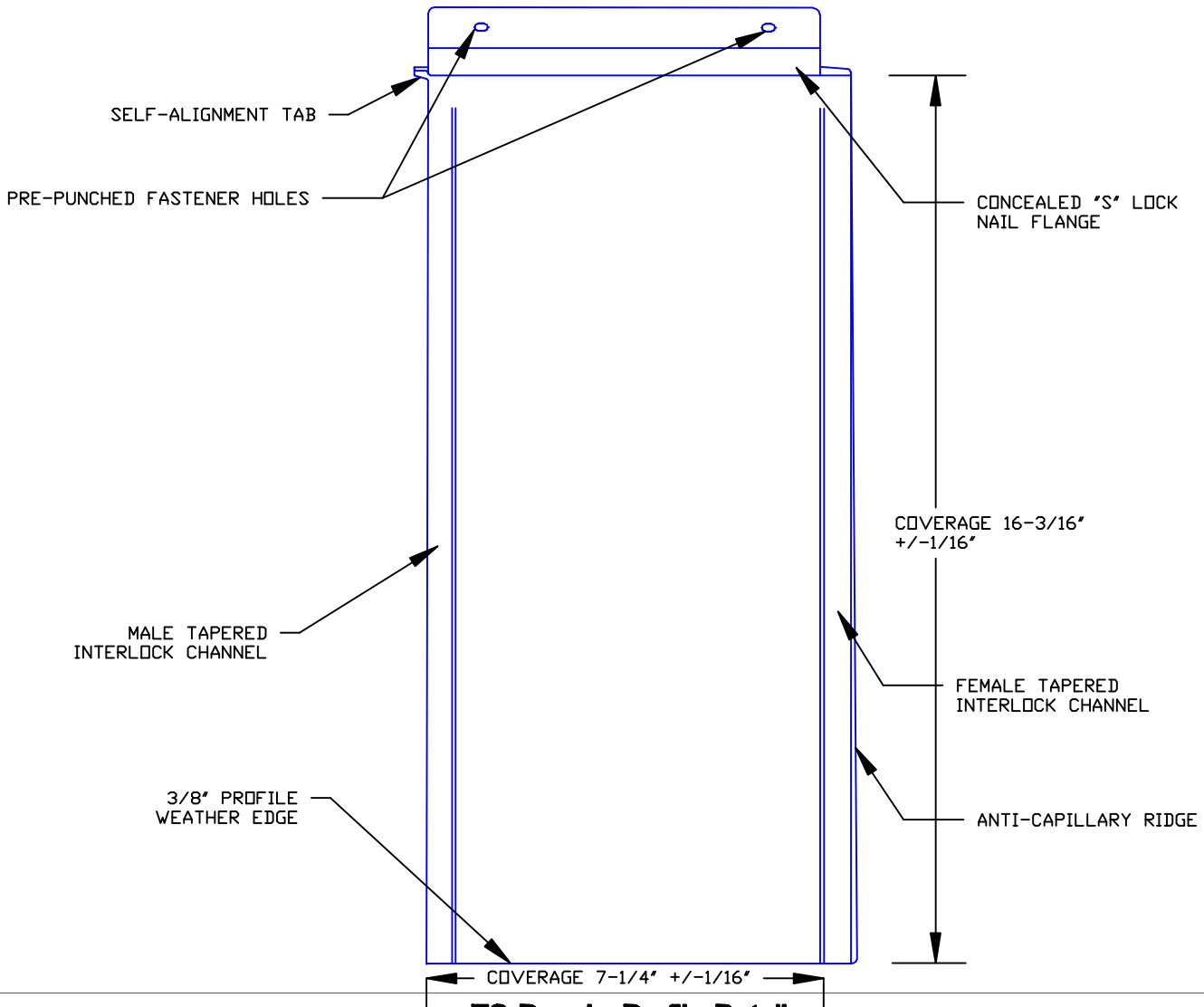


Left End



Right End



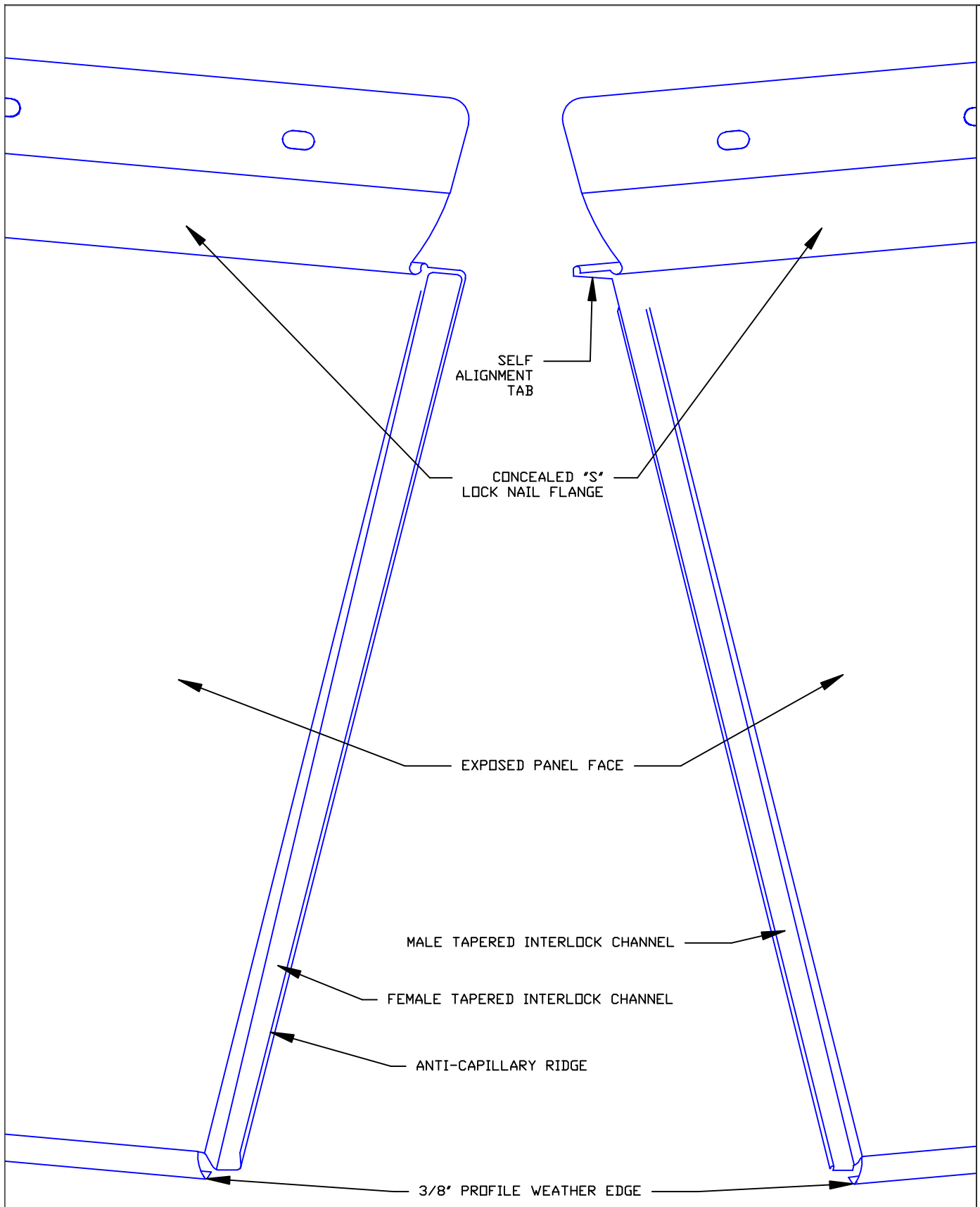
TS Panel - Profile Details

TS Panel



*The physics of Light Interference Color (LIC) prevent colored stainless steel from being 100% uniform

*STAINLESS COLORS	GA. AVAILABLE	MATERIALS	FINISH
NATURAL, PEWTER, WHEAT, BRONZE, BLUE, SLATE, BRONZE-GOLD, BURGUNDY, PURPLE-BLUE, PEACOCK, BLUE-GREEN, CHARCOAL (#4 SCOTCHBRITE FINISH ONLY)	28 GAUGE (.018")	STAINLESS STEEL + ZALMAG®	STAINLESS: BRIGHT (BA), MILL (BB)
		SIZES AVAILABLE	ZALMAG: NATURAL, PRE-PATINA II, KUANI GREEN, BARNA BRONZE
		7 3/8" x 16 3/8"	



TS Panel

TS Panel - Vertical Joint Detail

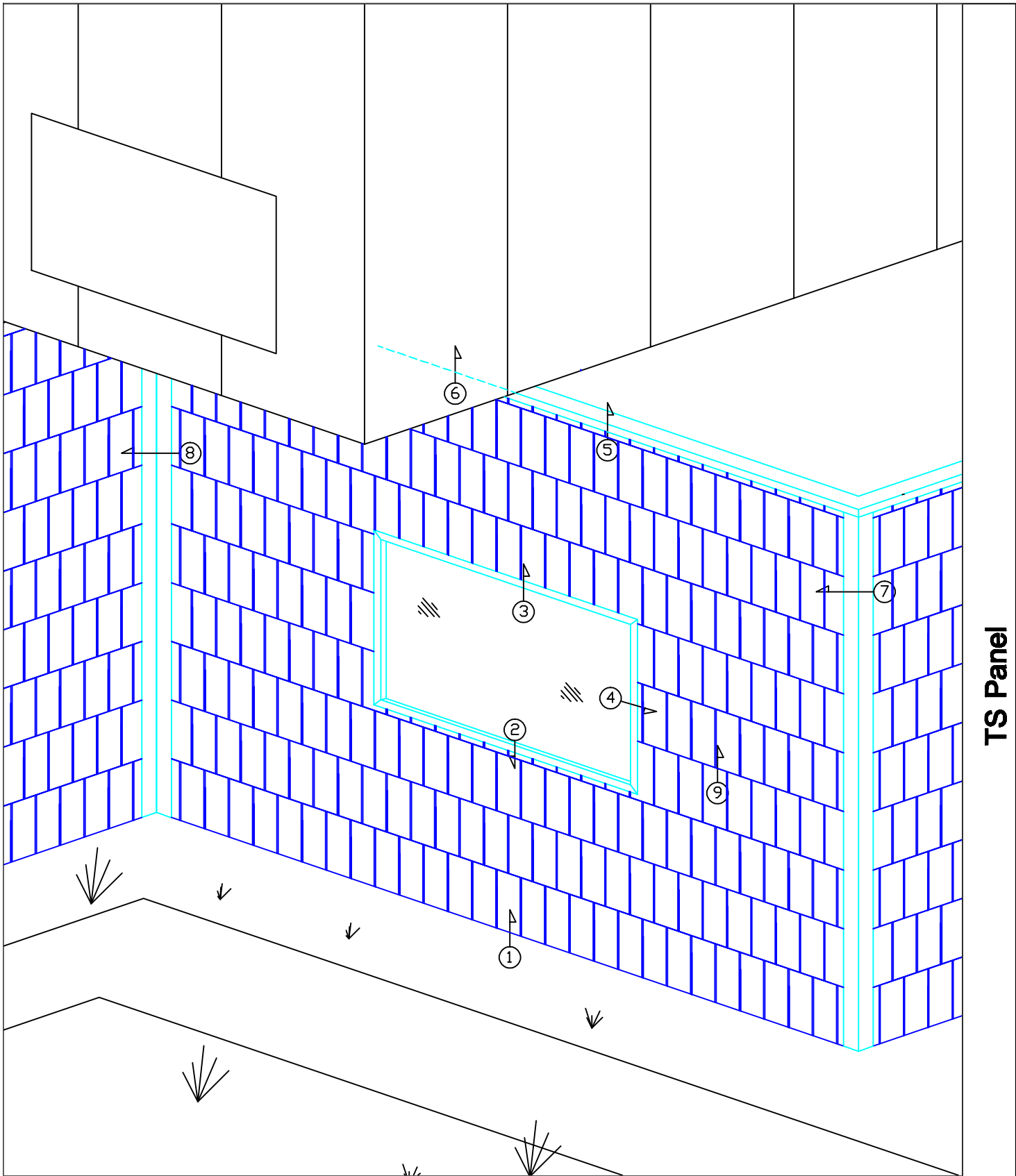
*The physics of Light Interference Color (LIC) prevent colored stainless steel from being 100% uniform

*STAINLESS COLORS
NATURAL, FEWTER, WHEAT, BRONZE, BLUE, SLATE, BRONZE-GOLD, BURGUNDY, PURPLE-BLUE, PEACOCK, BLUE-GREEN, CHARCOAL (H4/SCOTCHBRITE FINISH ONLY)

GA. AVAILABLE
28 GAUGE (.018")


MATERIALS
STAINLESS STEEL + ZALMAG®
SIZES AVAILABLE
7 3/8" x 16 3/8"

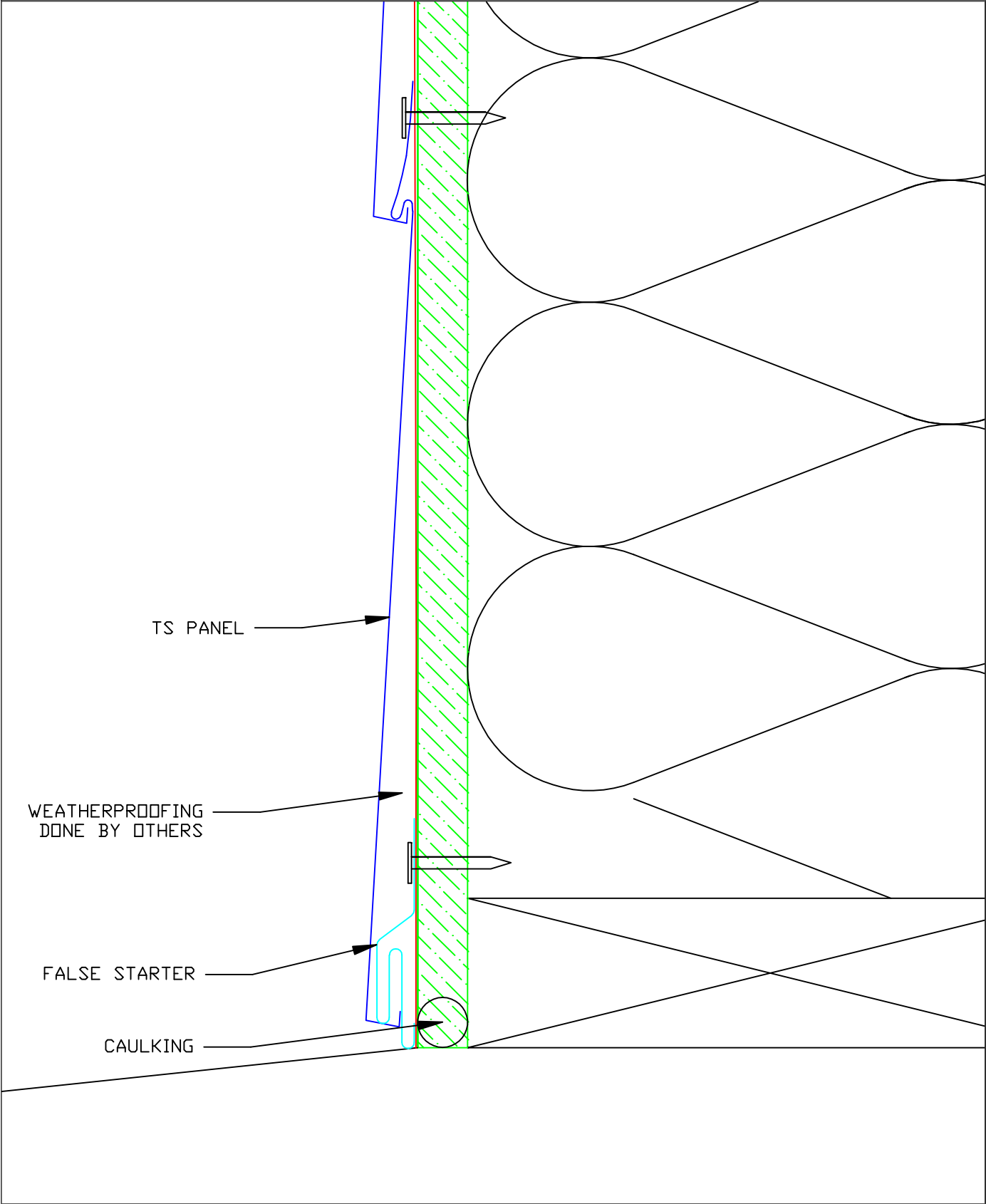
FINISH
STAINLESS: BRIGHT (BA), MILL (BB)
ZALMAG: NATURAL, PRE-PATINA II, KUANI GREEN, BARNA BRONZE



TS Panel


TS Panel - Detail Wall

 <p>Millennium tiles</p> <p><small>*The physics of Light Interference Color (LIC) prevent colored stainless steel from being 100% uniform</small></p>	<p>*STAINLESS COLORS</p> <p>NATURAL, PEWTER, WHEAT, BRONZE, BLUE, SLATE, BRONZE-GOLD, BURGUNDY, PURPLE-BLUE, PEACOCK, BLUE-GREEN, CHARCOAL (#4/SCOTCHBRITE FINISH ONLY)</p>	<p>GA. AVAILABLE</p> <p>28 GAUGE (.018")</p>	<p>MATERIALS</p> <p>STAINLESS STEEL + ZALMAG®</p>	<p>FINISH</p> <p>STAINLESS: BRIGHT (BA), MILL (#8)</p> <p>ZALMAG: NATURAL, PRE-PATINA II, KUANI GREEN, BARNA BRONZE</p>
			<p>SIZES AVAILABLE</p> <p>7 3/8" x 10 3/8"</p>	



TS Panel

TS Panel - Starter / False Starter



Millennium
tiles

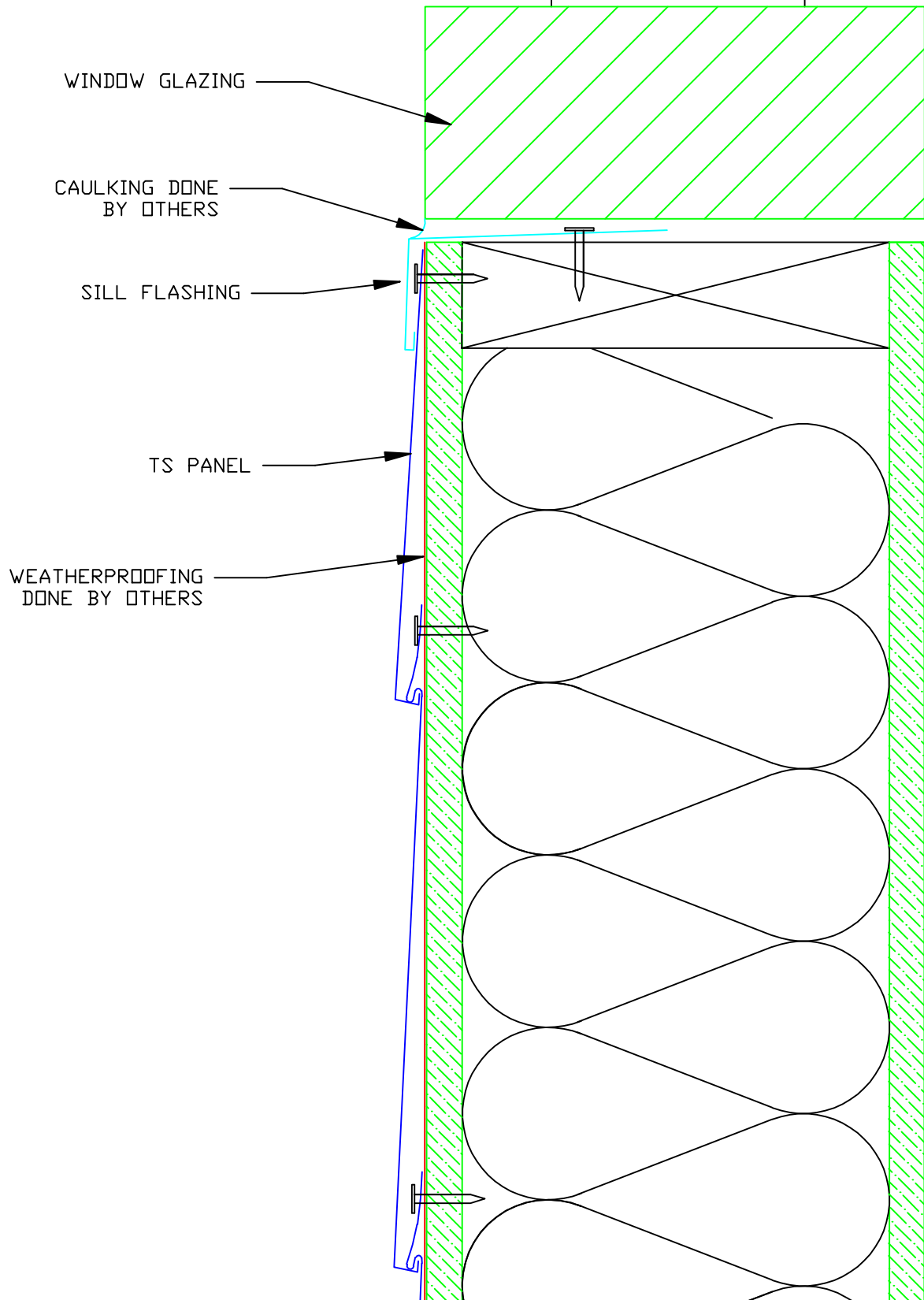
*The physics of Light Interference Color (LIC) prevent colored stainless steel from being 100% uniform

*STAINLESS COLORS
NATURAL, PEWTER, WHEAT, BRONZE, BLUE, SLATE, BRONZE-GOLD, BURGUNDY, PURPLE-BLUE, PEACOCK, BLUE-GREEN, CHARCOAL (#4/800TCBRITE FINISH ONLY)

GA. AVAILABLE
28 GAUGE (.018")


MATERIALS
STAINLESS STEEL + ZALMAG®
SIZES AVAILABLE
7 3/8" x 16 3/8"

FINISH
STAINLESS: BRIGHT (BA), MILL (BB)
ZALMAG: NATURAL, PRE-PATINA II, KUANI GREEN, BARNA BRONZE

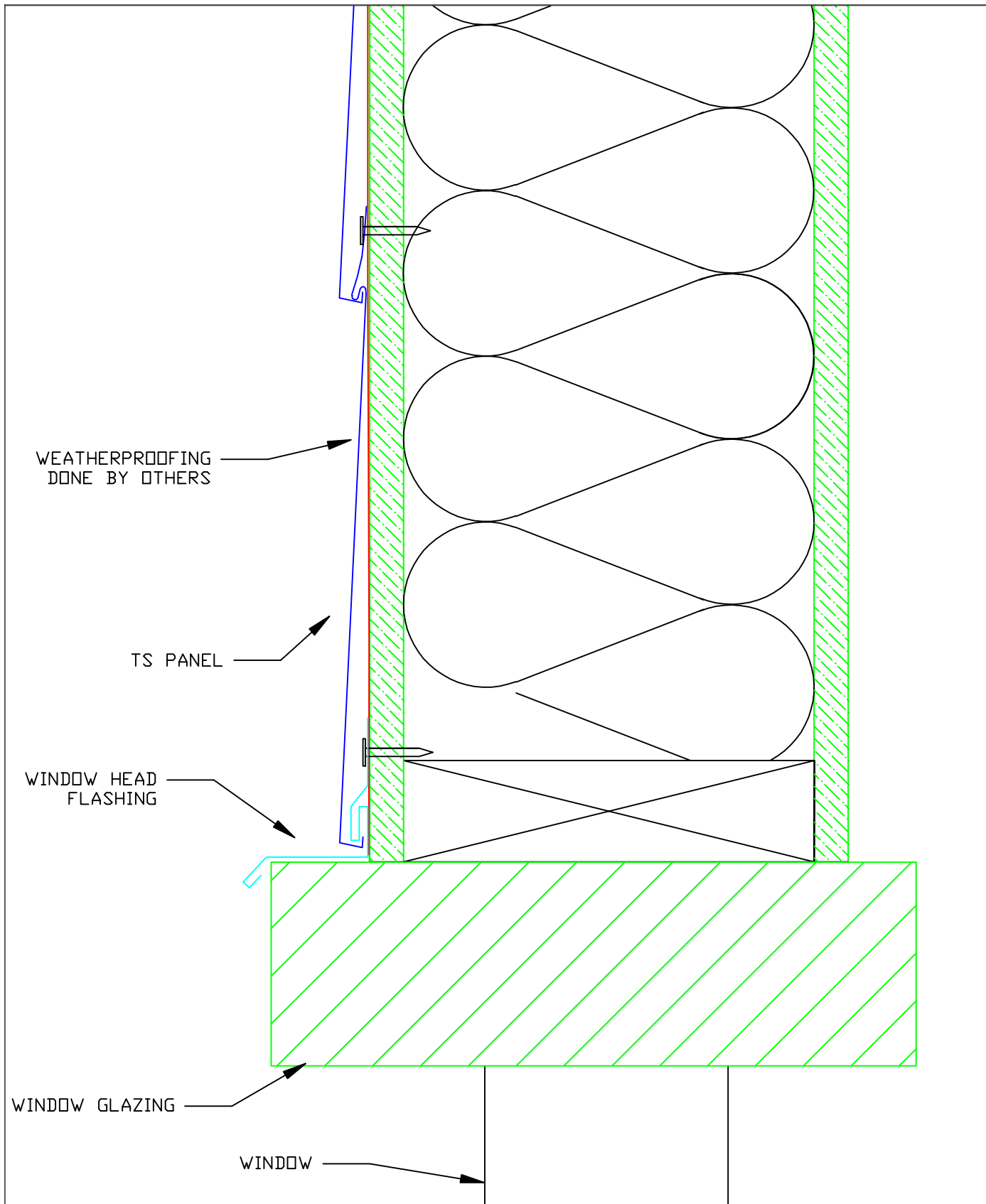


TS Panel

TS Panel - Window Sill


 <p>Millennium tiles</p> <p><small>*The physics of Light Interference Color (LIC) prevent colored stainless steel from being 100% uniform</small></p>	<p>*STAINLESS COLORS</p> <p>NATURAL, PEWTER, WHEAT, BRONZE, BLUE, SLATE, BRONZE-GOLD, BURGUNDY, PURPLE-BLUE, PEACOCK, BLUE-GREEN, CHARCOAL (#4 SCOTCHBRITE FINISH ONLY)</p>	<p>GA. AVAILABLE</p> <p>28 GAUGE (.018")</p>	<p>MATERIALS</p> <p>STAINLESS STEEL + ZALMAG®</p>	<p>FINISH</p> <p>STAINLESS: BRIGHT (BA), MILL (#8)</p> <p>ZALMAG: NATURAL, PRE-PATINA II, KUANI GREEN, BARNA BRONZE</p>
			<p>SIZES AVAILABLE</p> <p>7 3/8" x 16 3/8"</p>	

DETAIL
2A



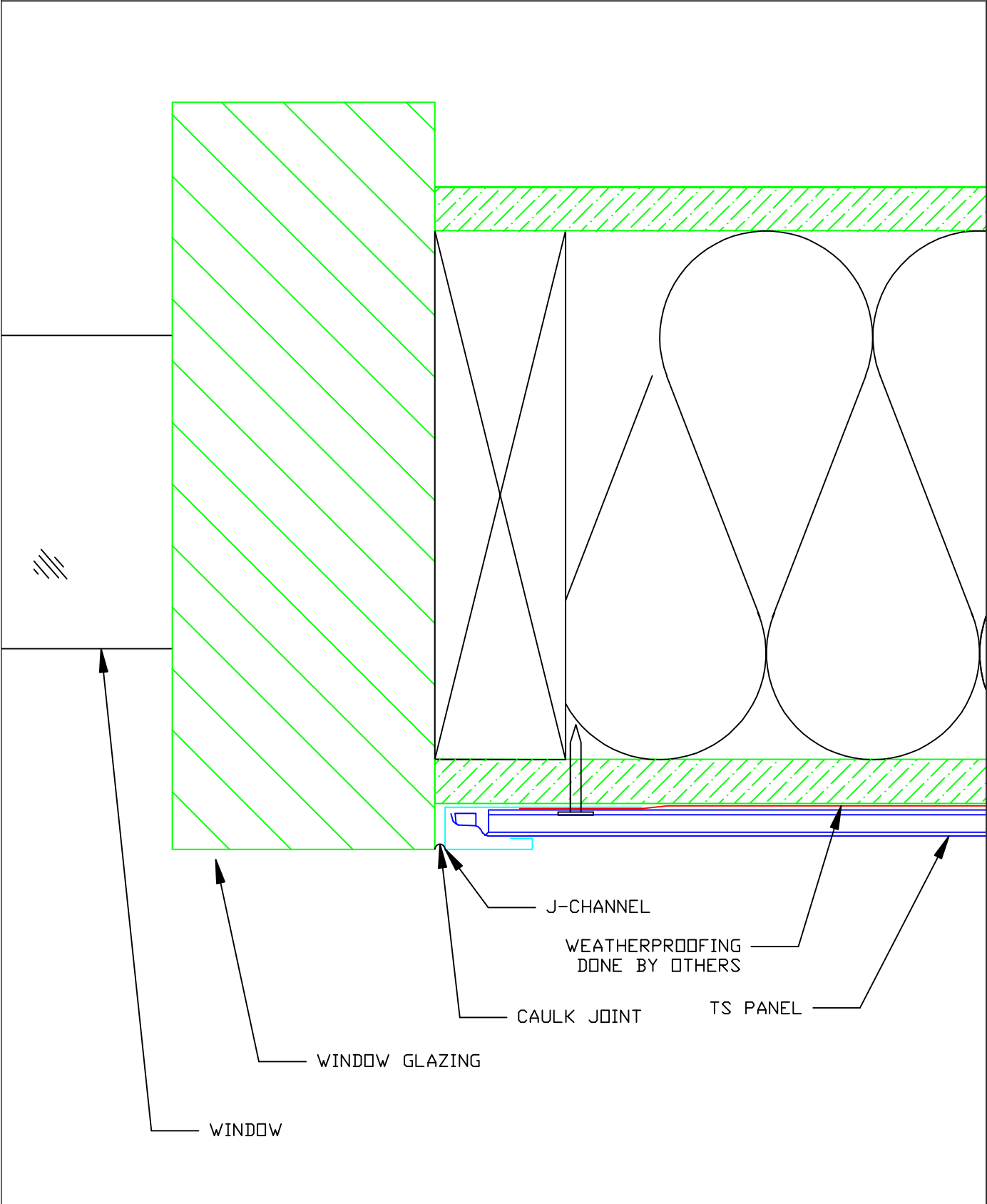
TS Panel

TS Panel - Window Head


 <p>Millennium tiles</p> <p><small>*The physics of Light Interference Color (LIC) prevent colored stainless steel from being 100% uniform</small></p>	<p>*STAINLESS COLORS</p> <p>NATURAL, PEWTER, WHEAT, BRONZE, BLUE, SLATE, BRONZE-GOLD, BURGUNDY, PURPLE-BLUE, PEACOCK, BLUE-GREEN, CHARCOAL (#4 SCOTCHBRITE FINISH ONLY)</p>	<p>GA. AVAILABLE</p> <p>28 GAUGE (.018")</p>	<p>MATERIALS</p> <p>STAINLESS STEEL + ZALMAG®</p>	<p>FINISH</p> <p>STAINLESS: BRIGHT (BA), MILL (#8)</p> <p>ZALMAG: NATURAL, PRE-PATINA II, KUANI GREEN, BARNA BRONZE</p>
			<p>SIZES AVAILABLE</p> <p>7 3/8" x 16 3/8"</p>	

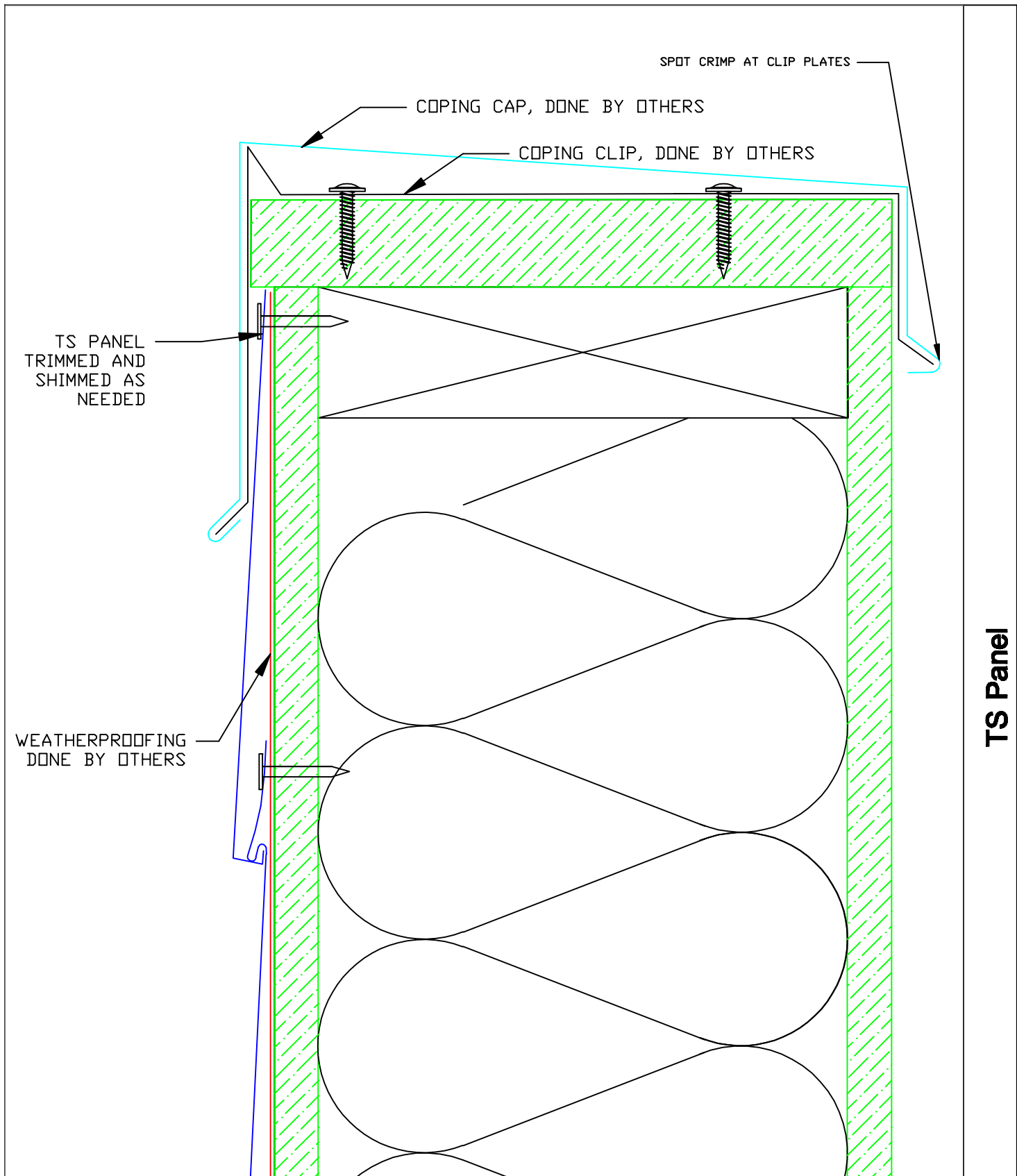
DETAIL

3




TS Panel - Window Jam

 <small>*The physics of Light Interference Color (LIC) prevent colored stainless steel from being 100% uniform</small>	*STAINLESS COLORS NATURAL, FEWTER, WHEAT, BRONZE, BLUE, SLATE, BRONZE-GOLD, BURGUNDY, PURPLE-BLUE, PEACOCK, BLUE-GREEN, CHARCOAL (#4/SCOTCHBRITE FINISH ONLY)	GA. AVAILABLE 28 GAUGE (.018")	MATERIALS STAINLESS STEEL + ZALMAG®	FINISH STAINLESS: BRIGHT (BA), MILL (#8) ZALMAG: NATURAL, PRE-PATINA II, KUANI GREEN, BARNA BRONZE
			SIZES AVAILABLE	
			7 3/8" x 16 3/8"	



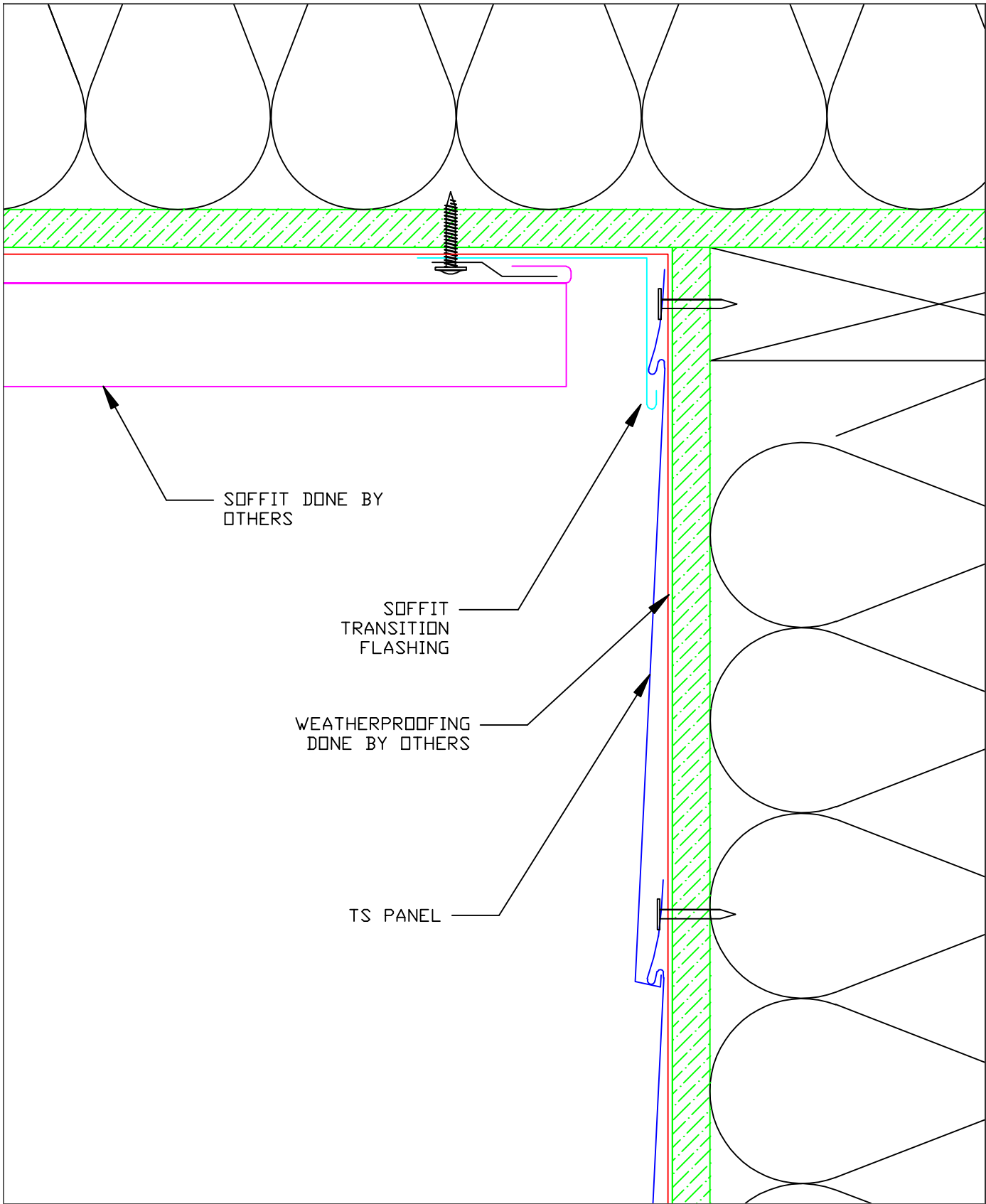
TS Panel

TS Panel - Coping

	*STAINLESS COLORS	GA. AVAILABLE	MATERIALS	FINISH
	NATURAL, PEWTER, WHEAT, BRONZE, BLUE, SLATE, BRONZE-GOLD, BURGUNDY, PURPLE-BLUE, PEACOCK, BLUE-GREEN, CHARCOAL (#4 SCOTCHBRITE FINISH ONLY)	28 GAUGE (.018")	STAINLESS STEEL + ZALMAG®	STAINLESS: BRIGHT (BA), MILL (BB)
			SIZES AVAILABLE	ZALMAG: NATURAL, PRE-PATINA II, KUANI GREEN, BARNA BRONZE
			7 3/8" x 16 3/8"	


*The physics of Light Interference Color (LIC) prevent colored stainless steel from being 100% uniform

DETAIL
5

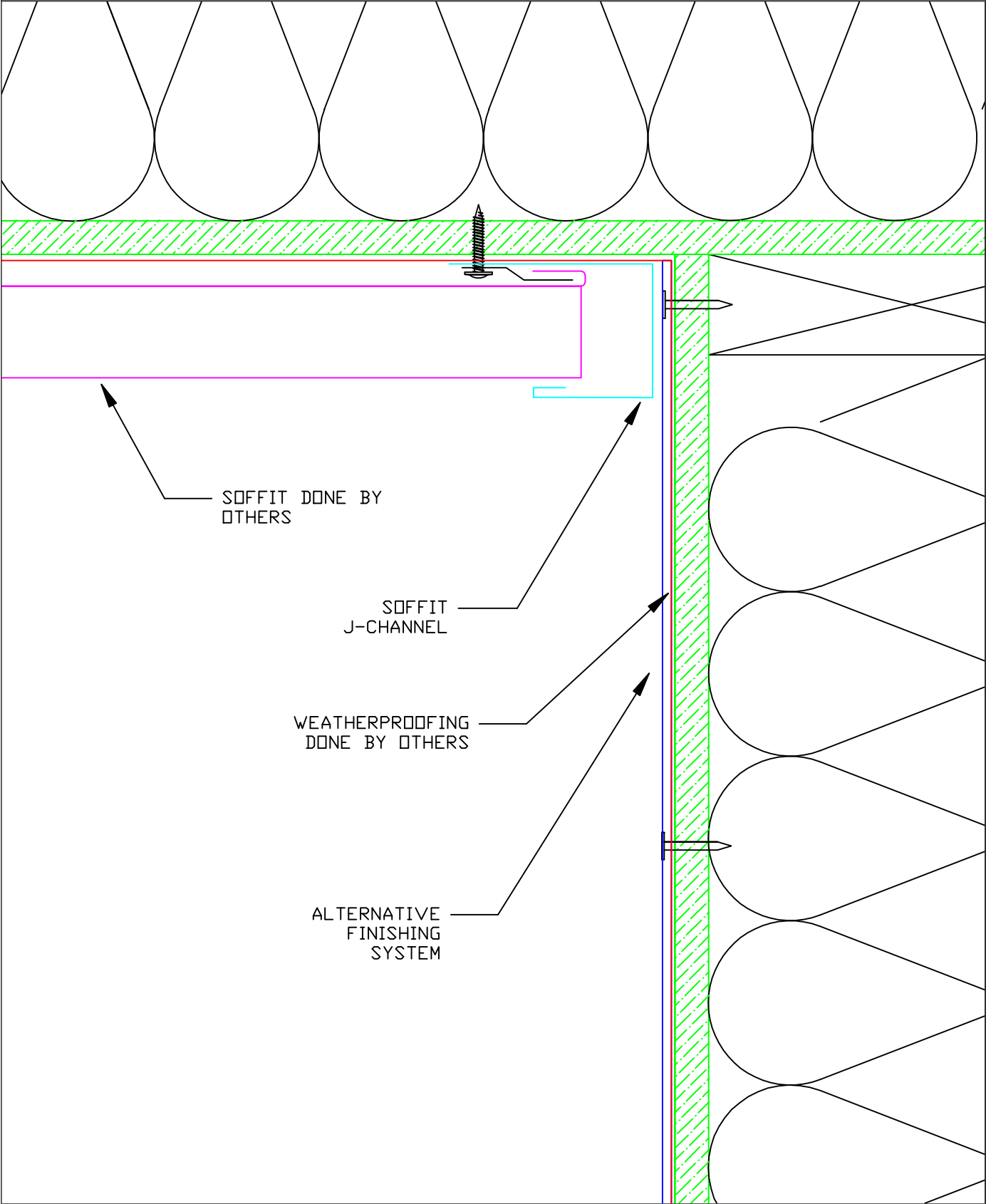


TS Panel

TS Panel - Termination at Soffit


 <p>Millennium tiles</p> <p><small>*The physics of Light Interference Color (LIC) prevent colored stainless steel from being 100% uniform</small></p>	<p>*STAINLESS COLORS</p> <p>NATURAL, PEWTER, WHEAT, BRONZE, BLUE, SLATE, BRONZE-GOLD, BURGUNDY, PURPLE-BLUE, PEACOCK, BLUE-GREEN, CHARCOAL (#4 SCOTCHBRITE FINISH ONLY)</p>	<p>GA. AVAILABLE</p> <p>28 GAUGE (.018")</p>	<p>MATERIALS</p> <p>STAINLESS STEEL + ZALMAG®</p>	<p>FINISH</p> <p>STAINLESS: BRIGHT (BA), MILL (BB)</p> <p>ZALMAG: NATURAL, PRE-PATINA II, KUANI GREEN, BARNA BRONZE</p>
			<p>SIZES AVAILABLE</p> <p>7 3/8" x 16 3/8"</p>	

DETAIL
6A

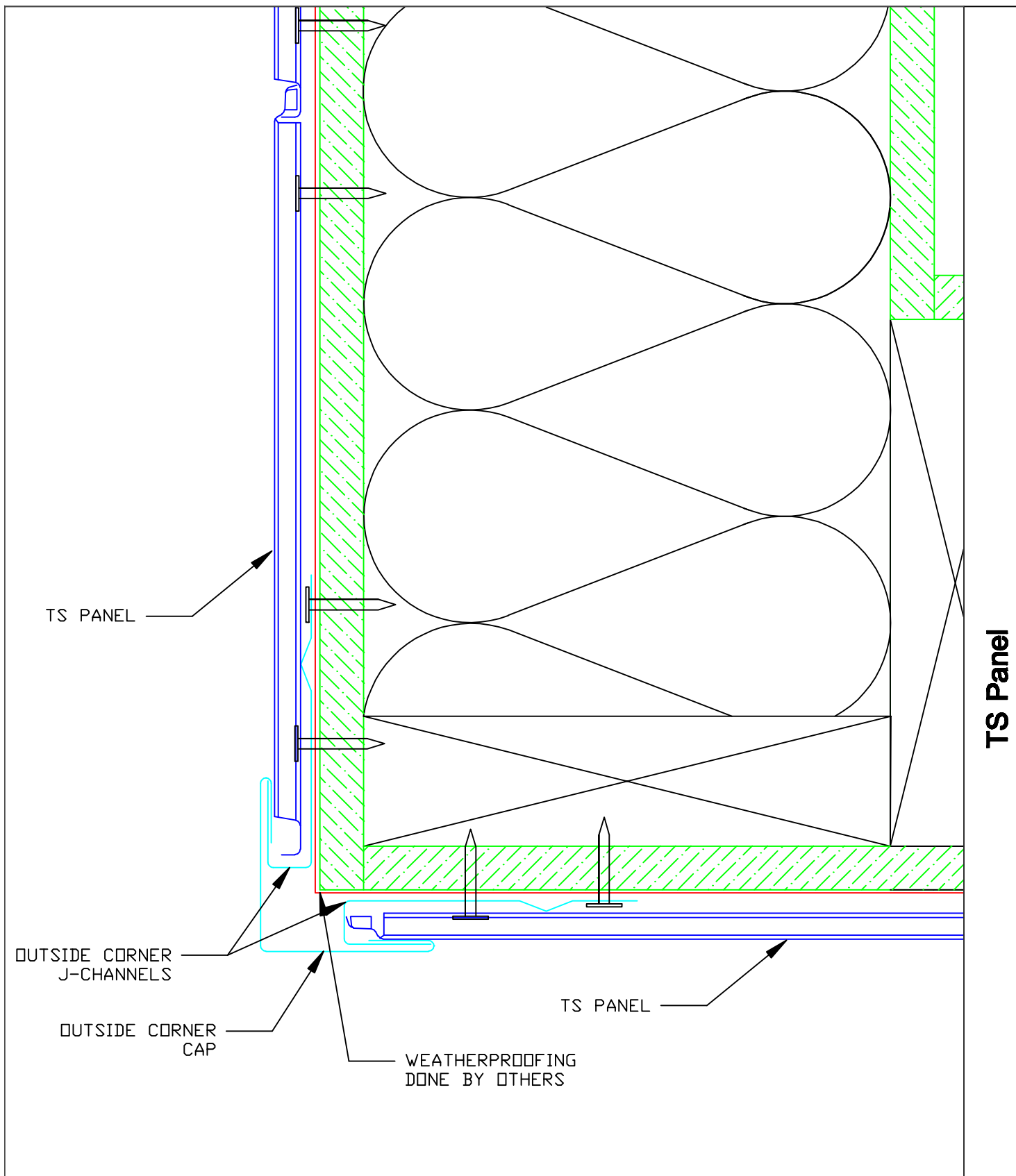


TS Panel


TS Panel - Termination at Soffit

 <small>*The physics of Light Interference Color (LIC) prevent colored stainless steel from being 100% uniform</small>	*STAINLESS COLORS NATURAL, PEWTER, WHEAT, BRONZE, BLUE, SLATE, BRONZE-GOLD, BURGUNDY, PURPLE-BLUE, PEACOCK, BLUE-GREEN, CHARCOAL (#4 SCOTCHBRITE FINISH ONLY)	GA. AVAILABLE 28 GAUGE (.018")	MATERIALS STAINLESS STEEL + ZALMAG®	FINISH STAINLESS: BRIGHT (BA), MILL (BB) ZALMAG: NATURAL, PRE-PATINA II, KUANI GREEN, BARNA BRONZE
			SIZES AVAILABLE	
			7 3/8" x 16 3/8"	

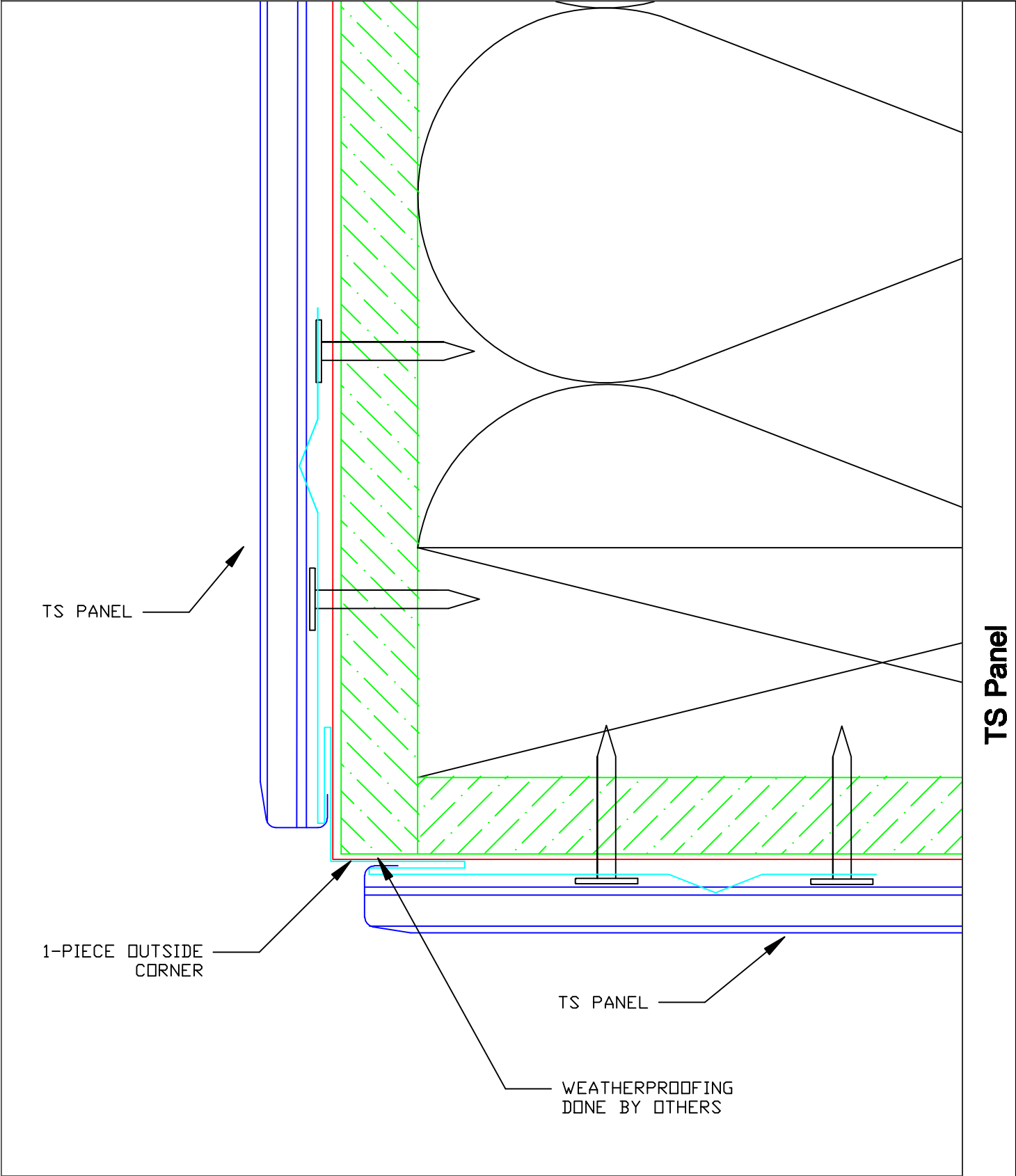
DETAIL
6B




TS Panel - Outside Corner (3-Piece)

 <p><small>*The physics of Light Interference Color (LIC) prevent colored stainless steel from being 100% uniform</small></p>	*STAINLESS COLORS	GA. AVAILABLE	MATERIALS	FINISH
	NATURAL, PEWTER, WHEAT, BRONZE, BLUE, SLATE, BRONZE-GOLD, BURGUNDY, PURPLE-BLUE, PEACOCK, BLUE-GREEN, CHARCOAL (H4/SCOTCHBRITE FINISH ONLY)	28 GAUGE (.018")	STAINLESS STEEL + ZALMAG®	STAINLESS: BRIGHT (BA), MILL (BB)
			SIZES AVAILABLE 7 3/8" x 16 3/8"	ZALMAG: NATURAL, PRE-PATINA II, KUANI GREEN, BARNA BRONZE

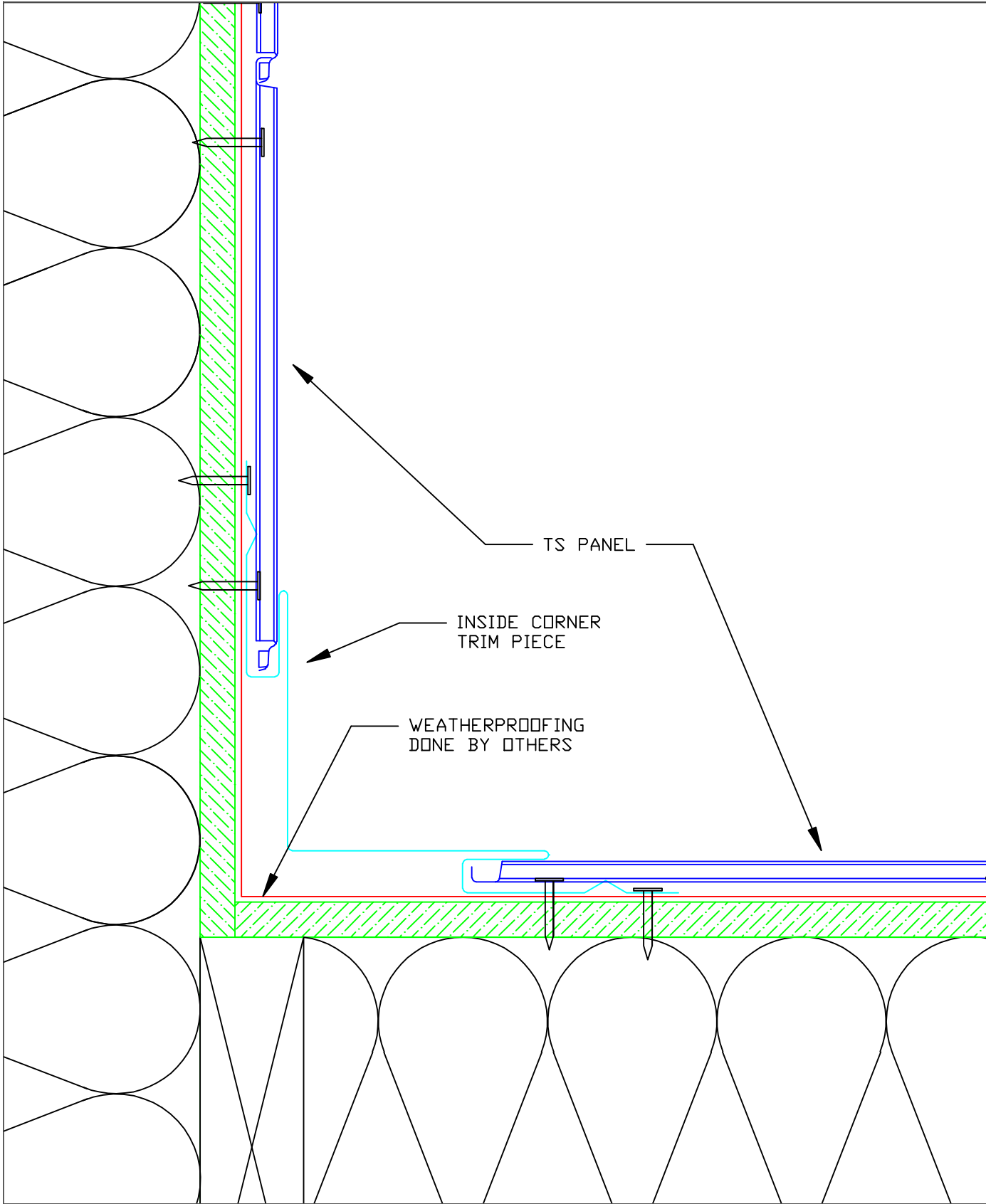
DETAIL
7A



TS Panel - Outside Corner (1-Piece)


 <small>*The physics of Light Interference Color (LIC) prevent colored stainless steel from being 100% uniform</small>	*STAINLESS COLORS NATURAL, PEWTER, WHEAT, BRONZE, BLUE, SLATE, BRONZE-GOLD, BURGUNDY, PURPLE-BLUE, PEACOCK, BLUE-GREEN, CHARCOAL (#4/800TCBRITE FINISH ONLY)	GA. AVAILABLE 28 GAUGE (.018")	MATERIALS STAINLESS STEEL + ZALMAG®	FINISH STAINLESS: BRIGHT (BA), MILL (BB) ZALMAG: NATURAL, PRE-PATINA II, KUANI GREEN, BARNA BRONZE
			SIZES AVAILABLE	
			7 3/8" x 16 3/8"	

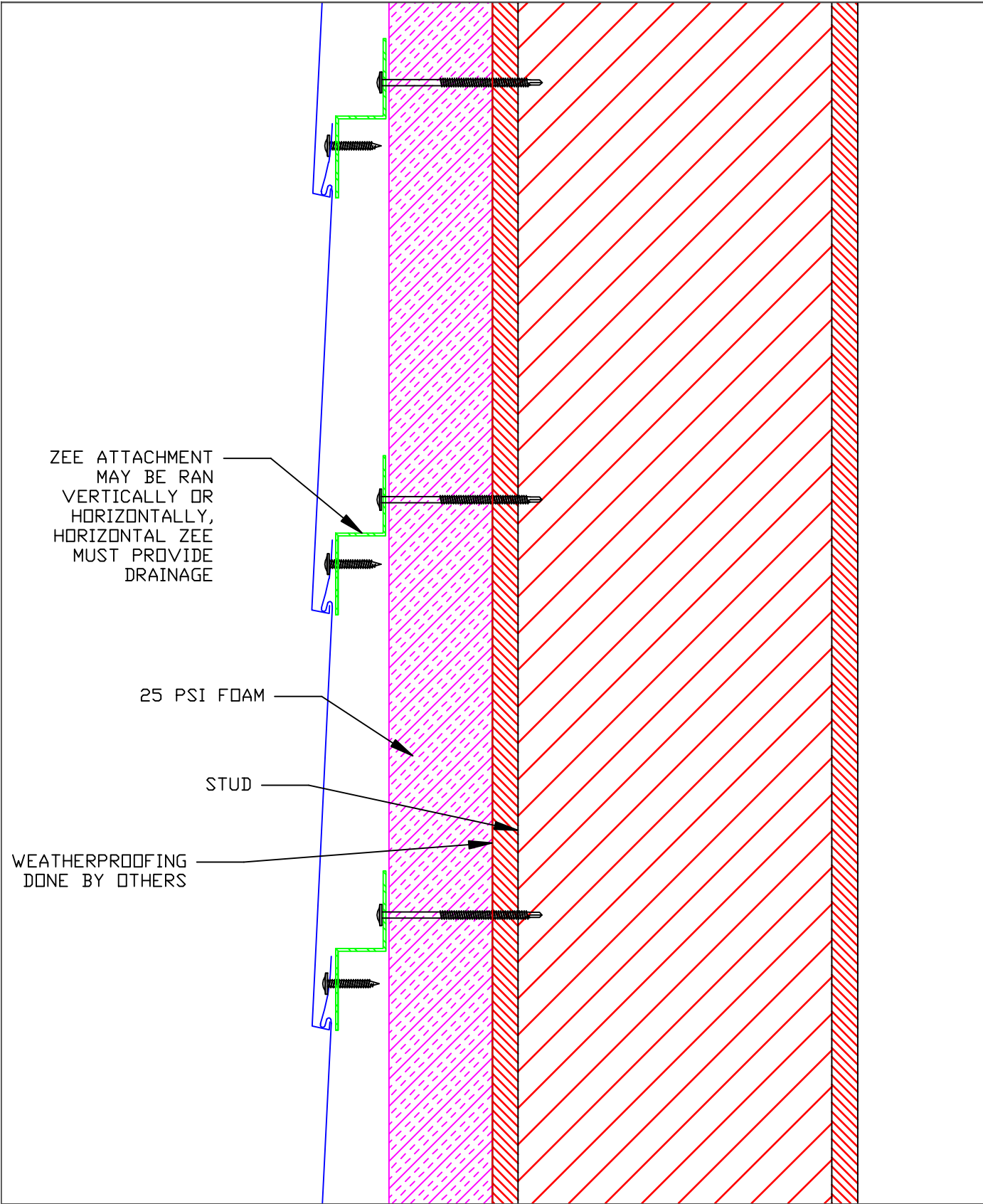
DETAIL
7B



TS Panel


TS Panel - Inside Corner

 <p>Millennium tiles</p> <p><small>*The physics of Light Interference Color (LIC) prevent colored stainless steel from being 100% uniform</small></p>	<p>*STAINLESS COLORS</p> <p>NATURAL, PEWTER, WHEAT, BRONZE, BLUE, SLATE, BRONZE-GOLD, BURGUNDY, PURPLE-BLUE, PEACOCK, BLUE-GREEN, CHARCOAL (H4/SCOTCHBRITE FINISH ONLY)</p>	<p>GA. AVAILABLE</p> <p>28 GAUGE (.018")</p>	<p>MATERIALS</p> <p>STAINLESS STEEL + ZALMAG®</p>	<p>FINISH</p> <p>STAINLESS: BRIGHT (BA), MILL (BB)</p> <p>ZALMAG: NATURAL, PRE-PATINA II, KUANI GREEN, BARNA BRONZE</p>
			<p>SIZES AVAILABLE</p> <p>7 3/8" x 16 3/8"</p>	



TS Panel

TS Panel - Wall Assembly Over Exterior Insulation



Millennium tiles

*The physics of Light Interference Color (LIC) prevent colored stainless steel from being 100% uniform

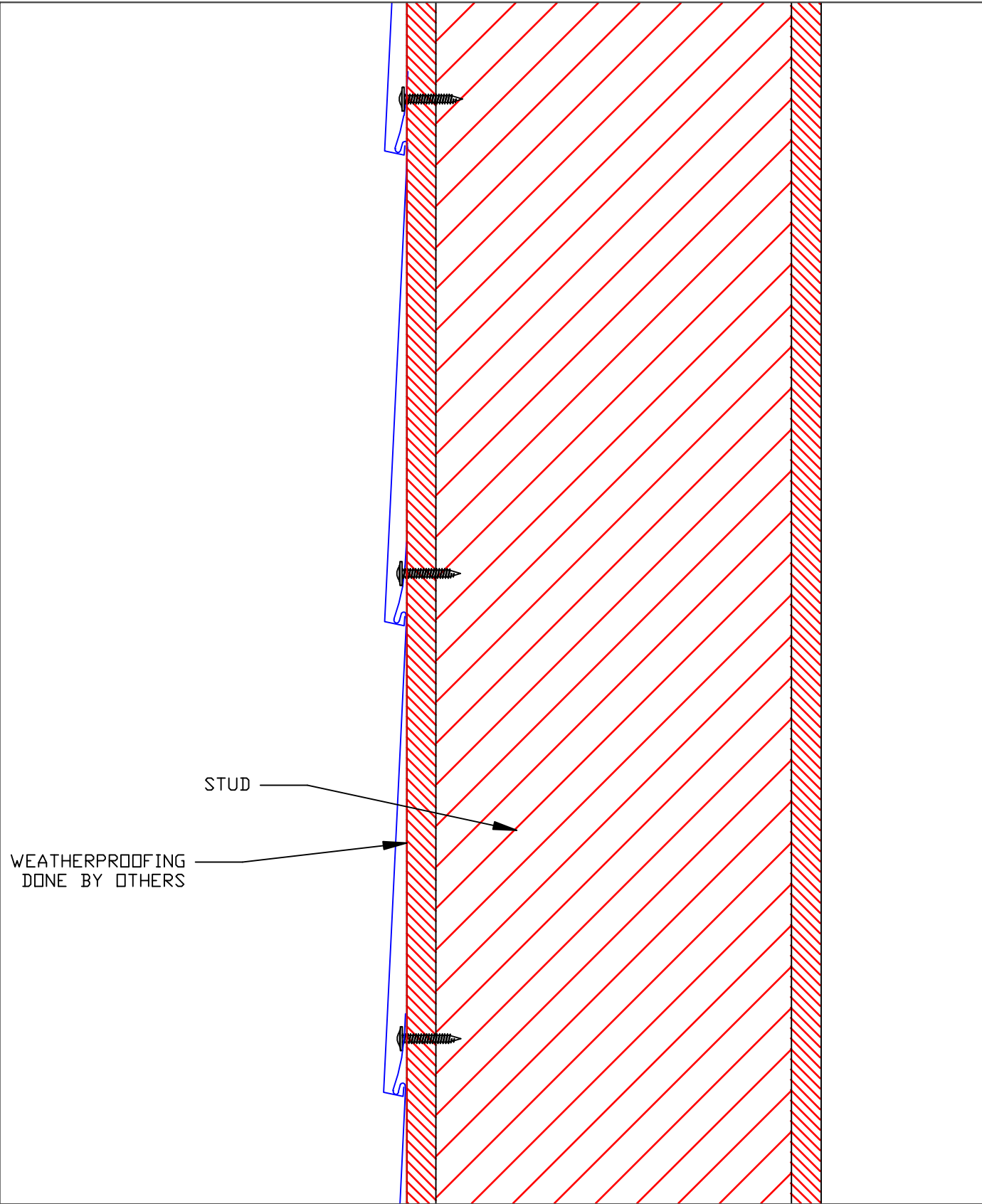
*STAINLESS COLORS
NATURAL, PEWTER, WHEAT, BRONZE, BLUE, SLATE, BRONZE-GOLD, BURGUNDY, PURPLE-BLUE, PEACOCK, BLUE-GREEN, CHARCOAL (#4 SCOTCHBRITE FINISH ONLY)

GA. AVAILABLE
28 GAUGE (.018")

MATERIALS
STAINLESS STEEL + ZALMAG®
SIZES AVAILABLE
7 3/8" x 16 3/8"


FINISH
STAINLESS: BRIGHT (BA), MILL (BB)
ZALMAG: NATURAL, PRE-PATINA II, KUANI GREEN, BARNA BRONZE

DETAIL
9A



TS Panel

TS Panel - Wall Assembly Over Plywood

 <p><small>*The physics of Light Interference Color (LIC) prevent colored stainless steel from being 100% uniform</small></p>	*STAINLESS COLORS NATURAL, PEWTER, WHEAT, BRONZE, BLUE, SLATE, BRONZE-GOLD, BURGUNDY, PURPLE-BLUE, PEACOCK, BLUE-GREEN, CHARCOAL (#4 SCOTCHBRITE FINISH ONLY)	GA. AVAILABLE 28 GAUGE (.018")	MATERIALS STAINLESS STEEL + ZALMAG®	FINISH STAINLESS: BRIGHT (BA), MILL (BB) ZALMAG: NATURAL, PRE-PATINA II, KUANI GREEN, BARNA BRONZE
			SIZES AVAILABLE 7 3/8" x 16 3/8"	

DETAIL
9B