
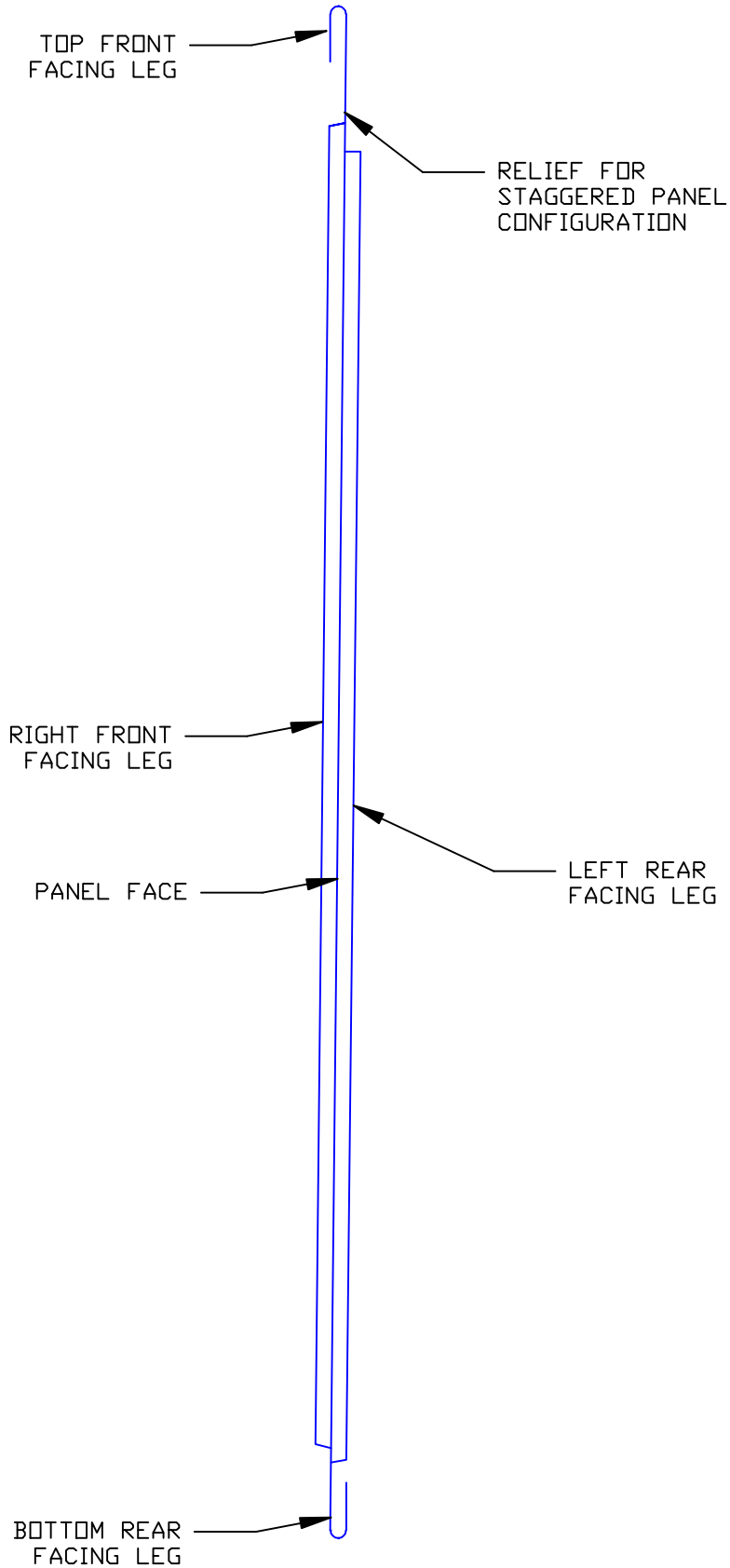



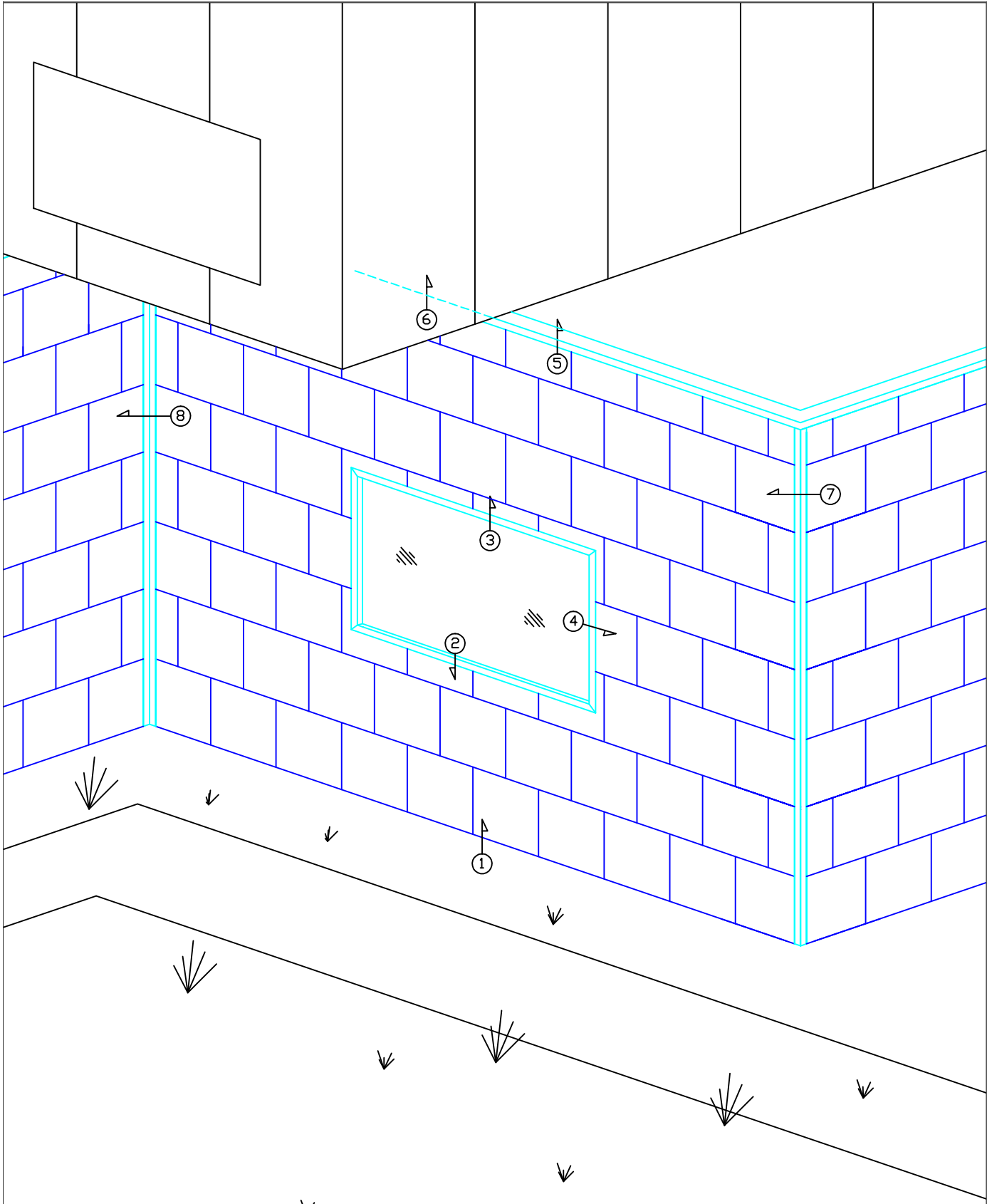
Flat-Lock Panel - Profile Details

 <p>*The physics of Light Interference Color (LIC) prevent colored stainless steel from being 100% uniform</p>	*STAINLESS COLORS NATURAL, FEWTER, WHEAT, BRONZE, BLUE, SLATE, BRONZE-GOLD, BURGUNDY, PURPLE-BLUE, PEACOCK, BLUE-GREEN, CHARCOAL (#4/800TCBRITE FINISH ONLY)	GA. AVAILABLE 24 gauge - 16 gauge (.003" - .008") operational thickness dependent upon panel size	MATERIALS STAINLESS STEEL + ZALMAG®	FINISH STAINLESS: BRIGHT (#4), MILL (#8) ZALMAG: NATURAL, PRE-PATINA II, KUANI GREEN, BARNA BRONZE
			SIZES AVAILABLE	
			Maximum Width: 20" Maximum Length: 120"	




Flat-Lock Panel - Profile Details

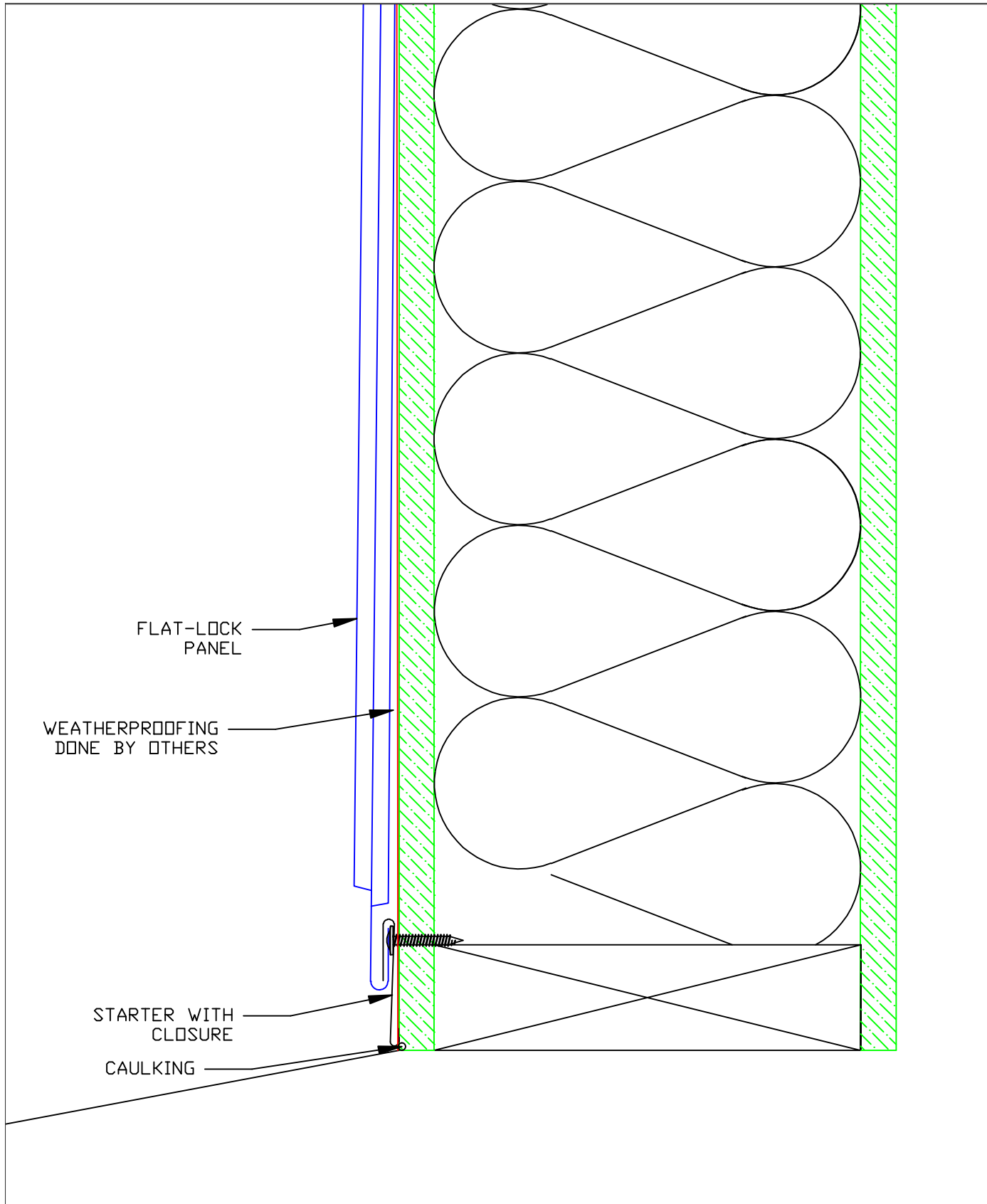
 <small>*The physics of Light Interference Color (LIC) prevent colored stainless steel from being 100% uniform</small>	*STAINLESS COLORS NATURAL, FEWTER, WHEAT, BRONZE, BLUE, SLATE, BRONZE-GOLD, BURGUNDY, PURPLE-BLUE, PEACOCK, BLUE-GREEN, CHARCOAL (94/SCOTCHBRITE FINISH ONLY)	GA. AVAILABLE 24 gauge - 16 gauge (.003" - .008") operational thickness dependent upon panel size	MATERIALS STAINLESS STEEL + ZALMAG®	FINISH STAINLESS: BRIGHT (BA), MILL (2B) ZALMAG: NATURAL, PRE-PATINA II, KUANI GREEN, BARNA BRONZE
			SIZES AVAILABLE	
			Maximum Width: 20" Maximum Length: 120"	



Flat-Lock Panel


Flat-Lock Panel - Detail Wall

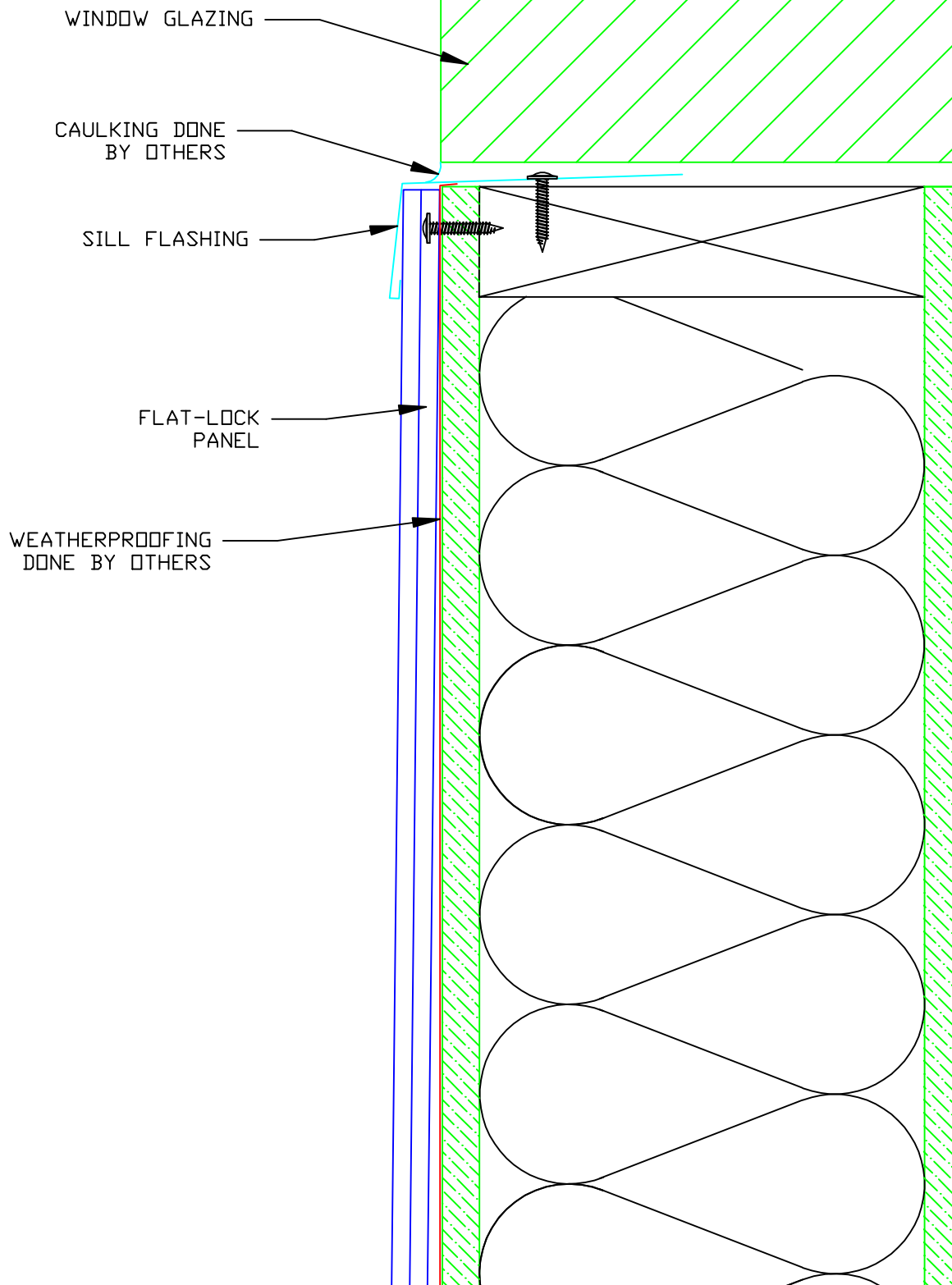
 <p>Millennium tiles</p> <p><small>*The physics of Light Interference Color (LIC) prevent colored stainless steel from being 100% uniform</small></p>	*STAINLESS COLORS	GA. AVAILABLE	MATERIALS	FINISH
	NATURAL, PEWTER, WHEAT, BRONZE, BLUE, SLATE, BRONZE-GOLD, BURGUNDY, PURPLE-BLUE, PEACOCK, BLUE-GREEN, CHARCOAL (94/SCOTCHBRITE FINISH ONLY)	24 gauge - 16 gauge (.003" - .008") operational thickness dependent upon panel size	STAINLESS STEEL + ZALMAG ®	STAINLESS: BRIGHT (BA), MILL (2B)
			SIZES AVAILABLE Maximum Width: 20" Maximum Length: 120"	ZALMAG: NATURAL, PRE-PATINA II, KUANI GREEN, BARNA BRONZE



Flat-Lock Panel


Flat-Lock Panel - Section Sill

 <p><small>*The physics of Light Interference Color (LIC) prevent colored stainless steel from being 100% uniform</small></p>	*STAINLESS COLORS NATURAL, PEWTER, WHEAT, BRONZE, BLUE, SLATE, BRONZE-GOLD, BURGUNDY, PURPLE-BLUE, PEACOCK, BLUE-GREEN, CHARCOAL (94/SCOTCHBRITE FINISH ONLY)	GA. AVAILABLE 24 gauge - 16 gauge (.003" - .008") operational thickness dependent upon panel size	MATERIALS STAINLESS STEEL + ZALMAG®	FINISH STAINLESS: BRIGHT (BA), MILL (2B) ZALMAG: NATURAL, PRE-PATINA II, KUANI GREEN, BARNA BRONZE
			SIZES AVAILABLE Maximum Width: 20" Maximum Length: 120"	



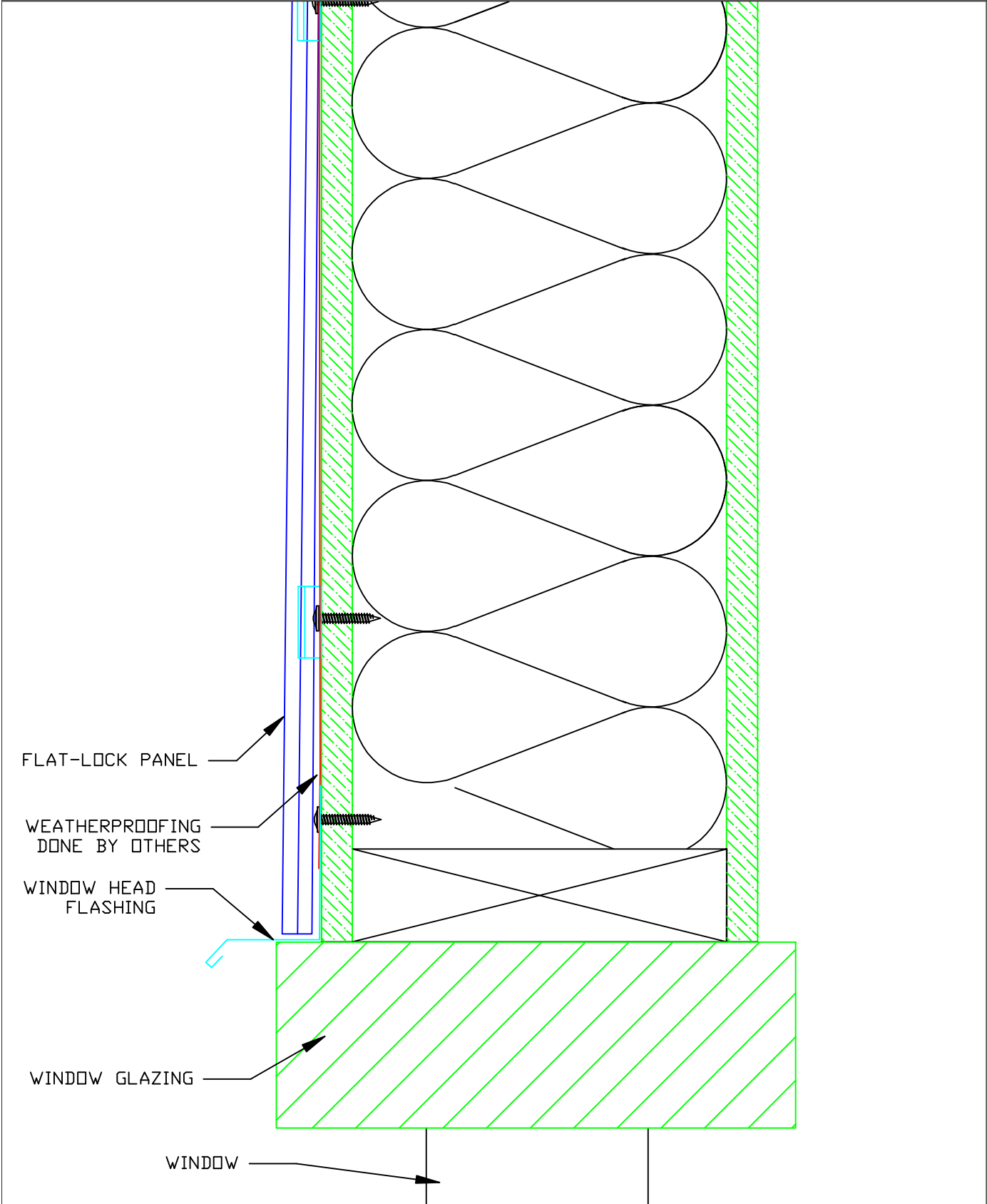
Flat-Lock Panel

Flat-Lock Panel - Window Sill

 <p>Millennium tiles</p> <p><small>*The physics of Light Interference Color (LIC) prevent colored stainless steel from being 100% uniform</small></p>	*STAINLESS COLORS	GA. AVAILABLE	MATERIALS	FINISH
	NATURAL, FEWTER, WHEAT, BRONZE, BLUE, SLATE, BRONZE-GOLD, BURGUNDY, PURPLE-BLUE, PEACOCK, BLUE-GREEN, CHARCOAL (94/SCOTCHBRITE FINISH ONLY)	24 gauge - 16 gauge (.003" - (.0085") operational thickness dependent upon panel size	STAINLESS STEEL + ZALMAG®	STAINLESS: BRIGHT (BA), MILL (2B) ZALMAG: NATURAL, PRE-PATINA II, KUANI GREEN, BARNA BRONZE
			SIZES AVAILABLE Maximum Width: 20" Maximum Length: 120"	


DETAIL

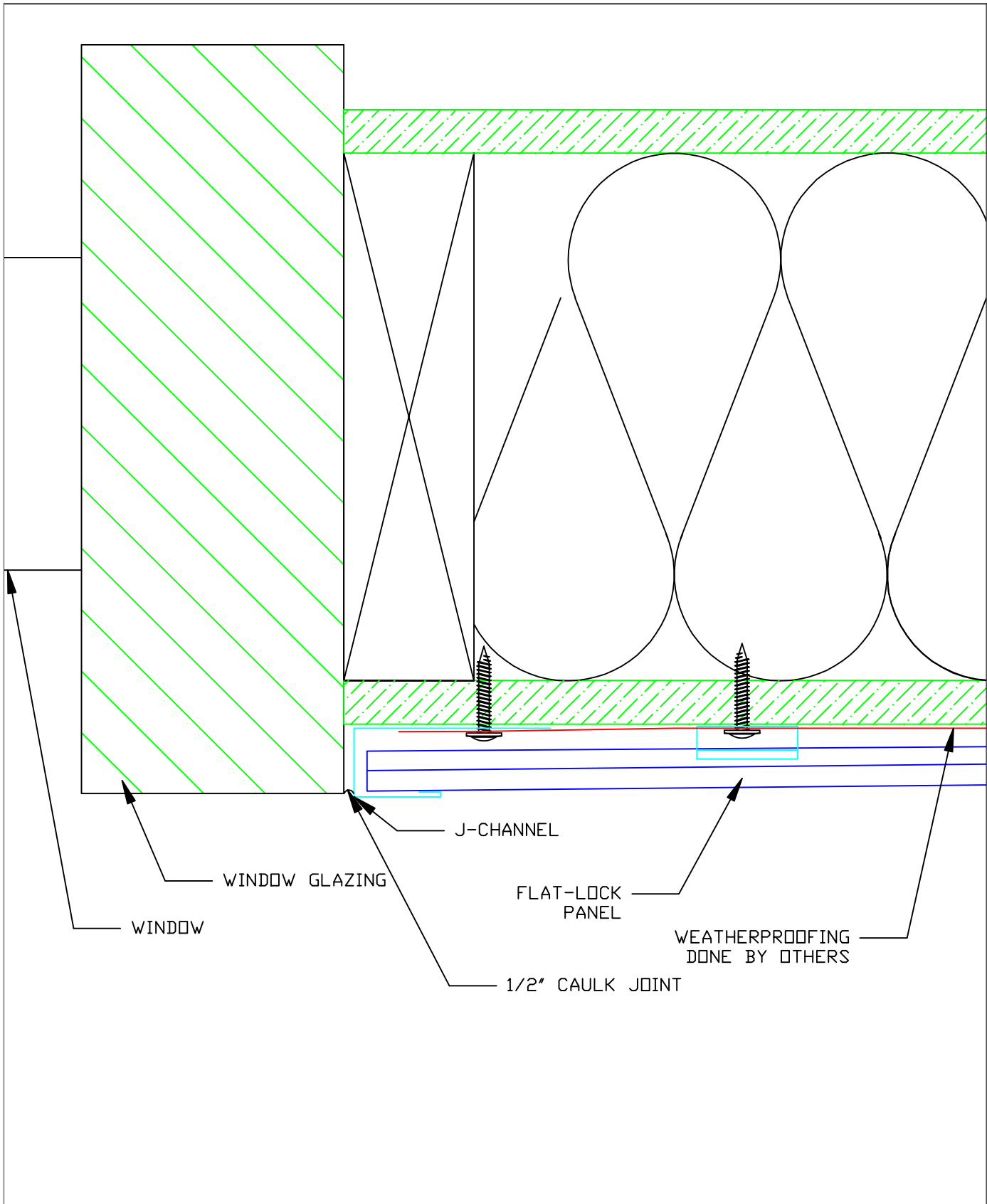
2



Flat-Lock Panel


Flat-Lock Panel - Window Head

 <p>Millennium tiles</p> <p><small>*The physics of Light Interference Color (LIC) prevent colored stainless steel from being 100% uniform</small></p>	<p>*STAINLESS COLORS</p> <p>NATURAL, PEWTER, WHEAT, BRONZE, BLUE, SLATE, BRONZE-GOLD, BURGUNDY, PURPLE-BLUE, PEACOCK, BLUE-GREEN, CHARCOAL (94/SCOTCHBRITE FINISH ONLY)</p>	<p>GA. AVAILABLE</p> <p>24 gauge - 16 gauge (.003" - .008")</p> <p>operational thickness dependent upon panel size</p>	<p>MATERIALS</p> <p>STAINLESS STEEL + ZALMAG®</p>	<p>FINISH</p> <p>STAINLESS: BRIGHT (BA), MILL (2B)</p> <p>ZALMAG: NATURAL, PRE-PATINA II, KUANI GREEN, BARNA BRONZE</p>
			<p>SIZES AVAILABLE</p> <p>Maximum Width: 20" Maximum Length: 120"</p>	

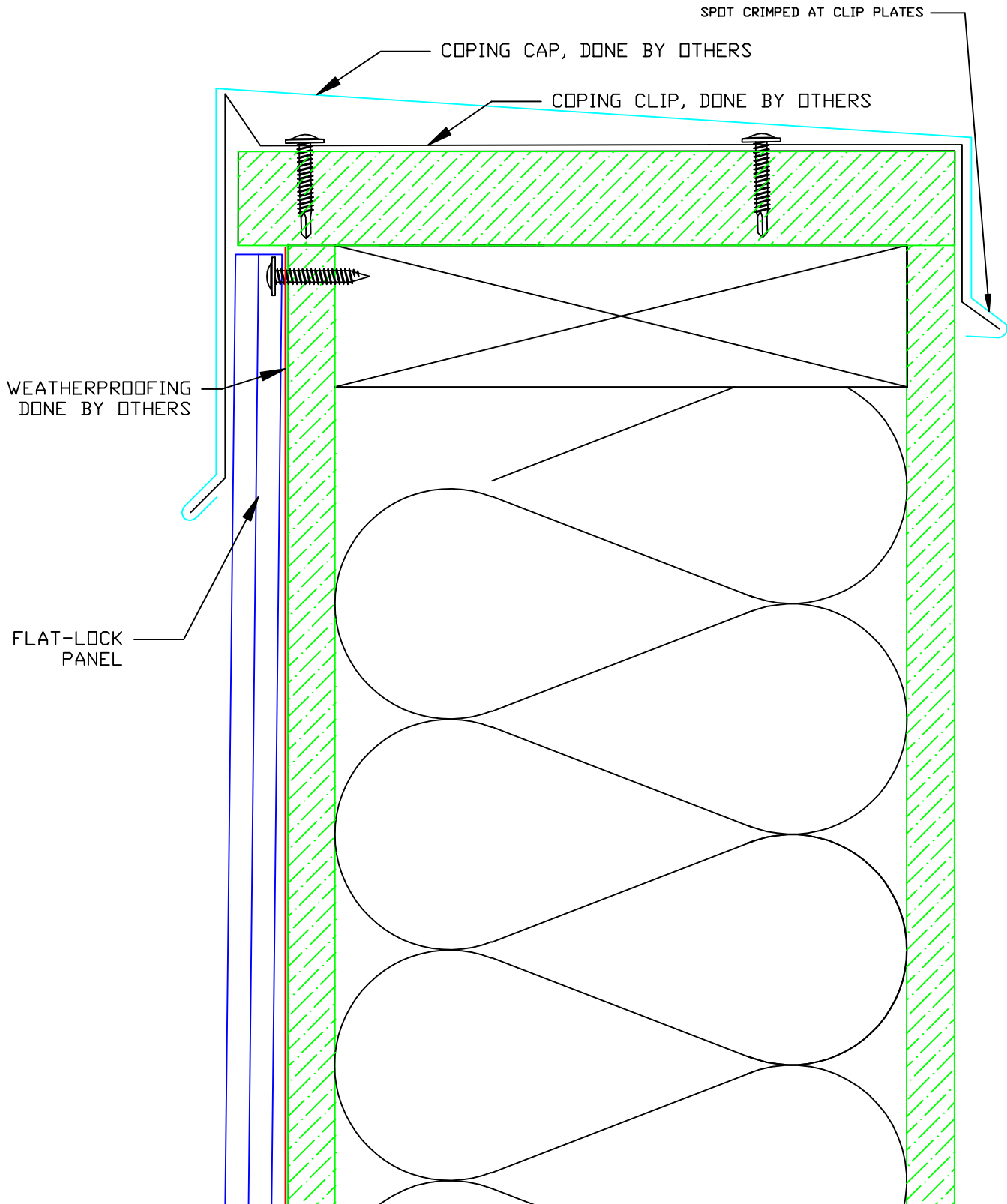


Flat-Lock Panel

Flat-Lock Panel - Window Jam


	*STAINLESS COLORS	GA. AVAILABLE	MATERIALS	FINISH
	NATURAL, PEWTER, WHEAT, BRONZE, BLUE, SLATE, BRONZE-GOLD, BURGUNDY, PURPLE-BLUE, PEACOCK, BLUE-GREEN, CHARCOAL (94/SCOTCHBRITE FINISH ONLY)	24 gauge - 16 gauge (.008" - .005") operational thickness dependent upon panel size	STAINLESS STEEL + ZALMAG®	STAINLESS: BRIGHT (BA), MILL (2B)
			SIZES AVAILABLE Maximum Width: 20" Maximum Length: 120"	ZALMAG: NATURAL, PRE-PATINA II, KUANI GREEN, BARNA BRONZE

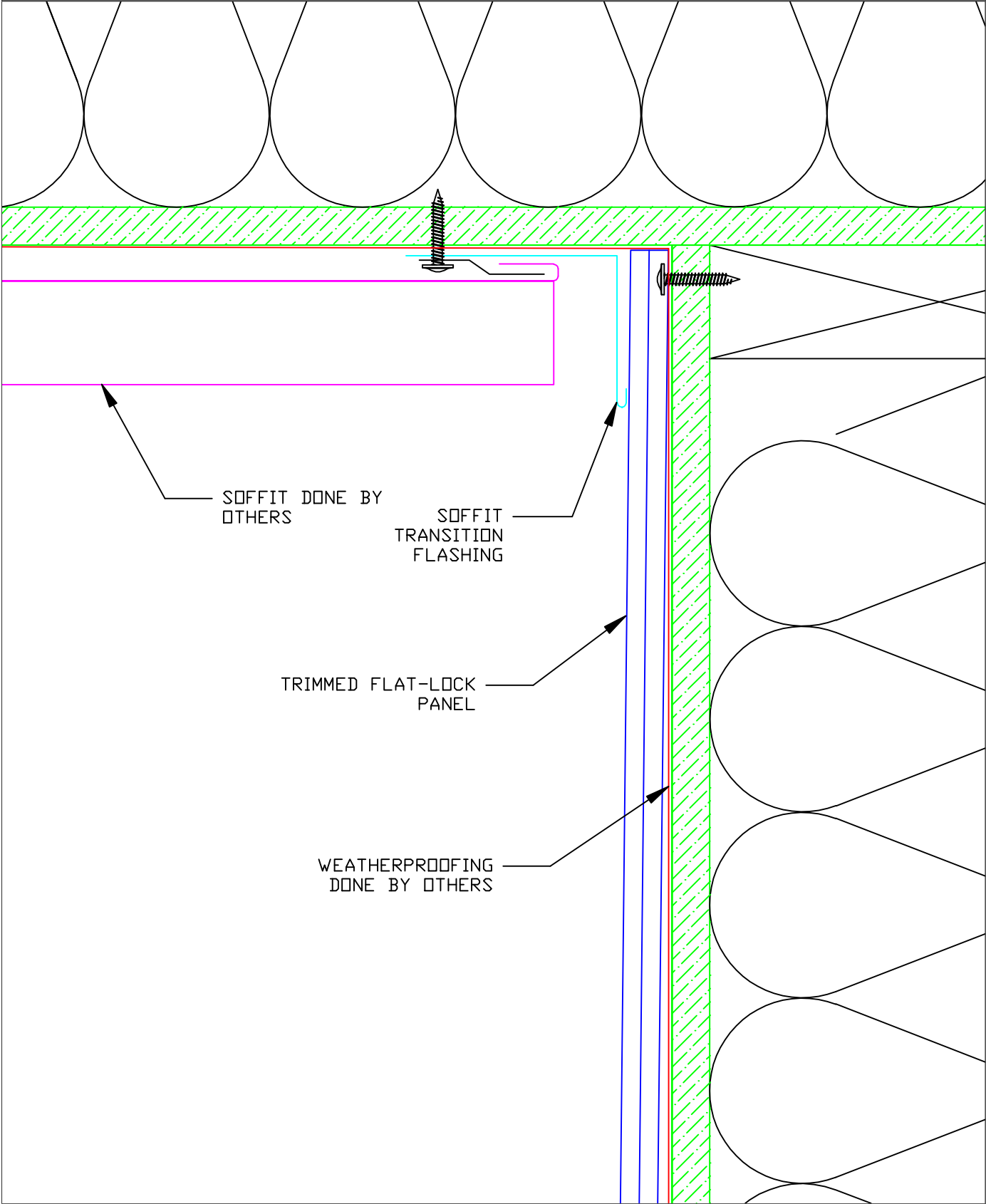
*The physics of Light Interference Color (LIC) prevent colored stainless steel from being 100% uniform



Flat-Lock Panel


Flat-Lock Panel - Coping

 <p>Millennium tiles</p> <p><small>*The physics of Light Interference Color (LIC) prevent colored stainless steel from being 100% uniform</small></p>	<p>*STAINLESS COLORS</p> <p>NATURAL, PEWTER, WHEAT, BRONZE, BLUE, SLATE, BRONZE-GOLD, BURGUNDY, PURPLE-BLUE, PEACOCK, BLUE-GREEN, CHARCOAL (94/SCOTCHBRITE FINISH ONLY)</p>	<p>GA. AVAILABLE</p> <p>24 gauge - 16 gauge (.003" - (.008"))</p> <p>operational thickness dependent upon panel size</p>	<p>MATERIALS</p> <p>STAINLESS STEEL + ZALMAG®</p>	<p>FINISH</p> <p>STAINLESS: BRIGHT (BA), MILL (2B)</p> <p>ZALMAG: NATURAL, PRE-PATINA II, KUANI GREEN, BARNA BRONZE</p>
			<p>SIZES AVAILABLE</p> <p>Maximum Width: 20" Maximum Length: 120"</p>	



Flat-Lock Panel

Flat-Lock Panel - Soffit Transition



Millennium
tiles

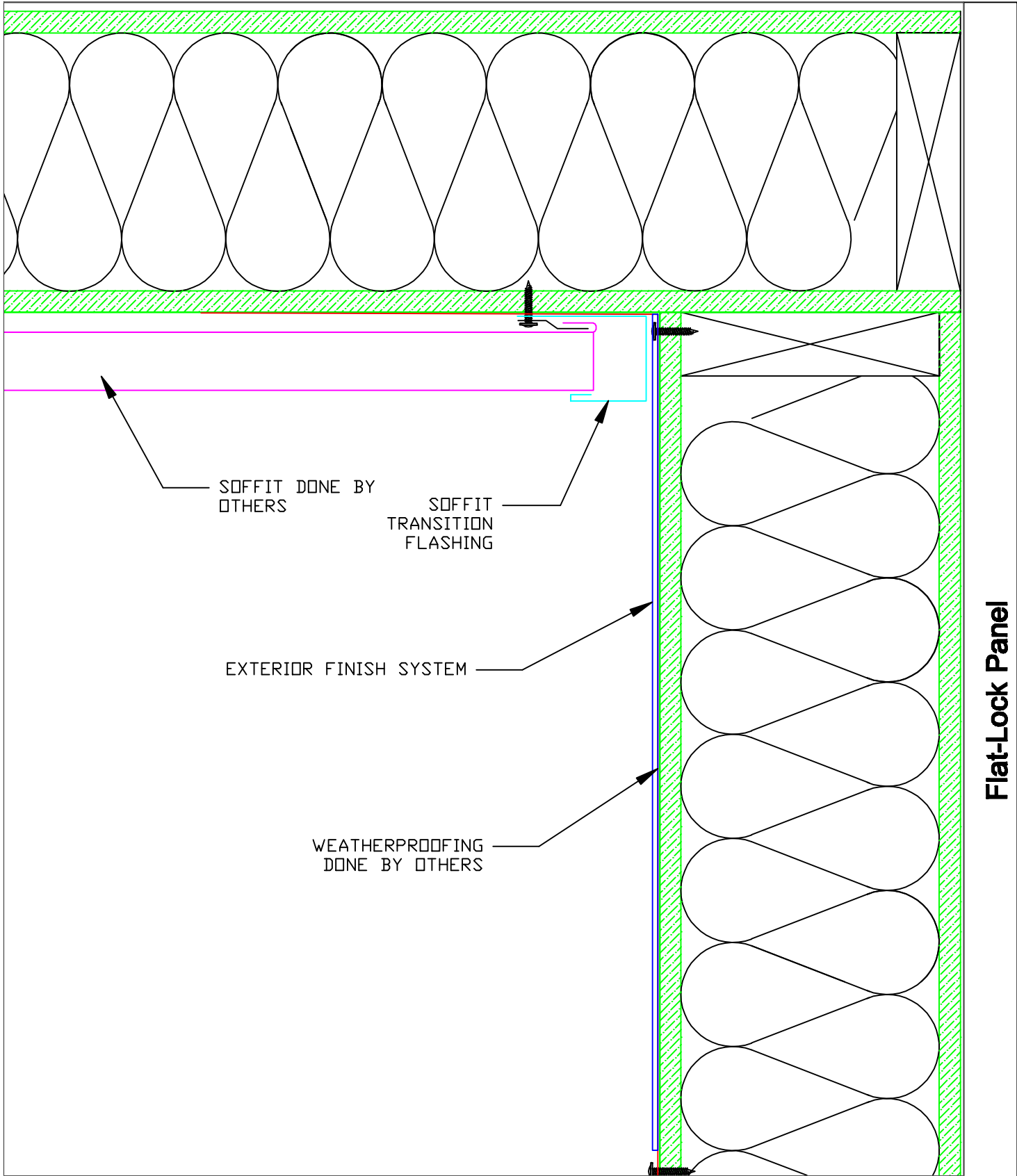
*The physics of Light Interference Color (LIC) prevent colored stainless steel from being 100% uniform

*STAINLESS COLORS
NATURAL, FEWTER, WHEAT, BRONZE, BLUE, SLATE, BRONZE-GOLD, BURGUNDY, PURPLE-BLUE, PEACOCK, BLUE-GREEN, CHARCOAL (94/SCOTCHBRITE FINISH ONLY)


GA. AVAILABLE
24 gauge - 16 gauge (.003" - .008")
operational thickness dependent upon panel size

MATERIALS
STAINLESS STEEL + ZALMAG®
SIZES AVAILABLE
Maximum Width: 20" Maximum Length: 120"

FINISH
STAINLESS: BRIGHT (BA), MILL (2B)
ZALMAG: NATURAL, PRE-PATINA II, KUANI GREEN, BARNA BRONZE

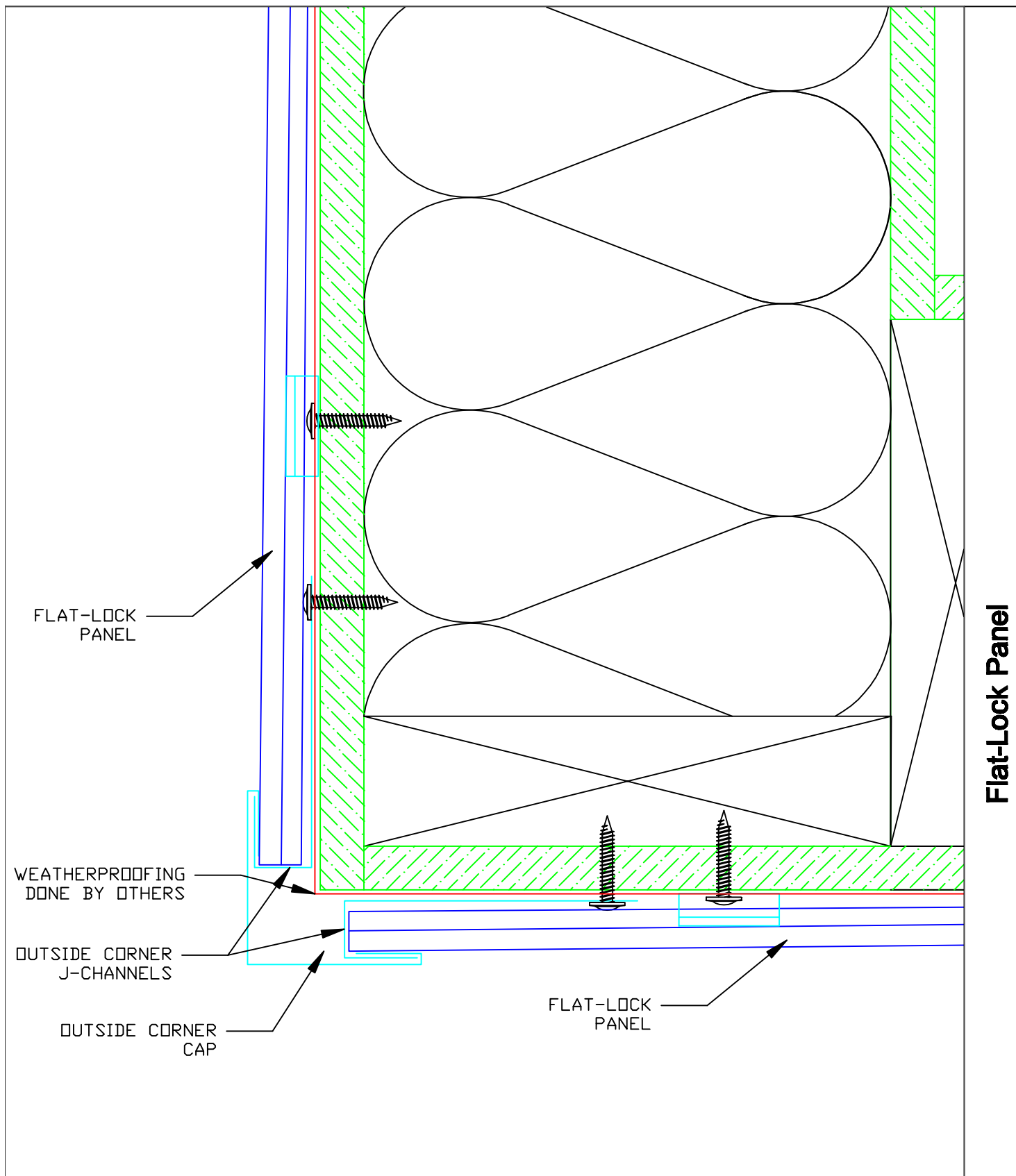


Flat-Lock Panel - Soffit Transition

 <p>Millennium tiles</p> <p><small>*The physics of Light Interference Color (LIC) prevent colored stainless steel from being 100% uniform</small></p>	<p>*STAINLESS COLORS</p> <p>NATURAL, PEWTER, WHEAT, BRONZE, BLUE, SLATE, BRONZE-GOLD, BURGUNDY, PURPLE-BLUE, PEACOCK, BLUE-GREEN, CHARCOAL (94/SCOTCHBRITE FINISH ONLY)</p>	<p>GA. AVAILABLE</p> <p>24 gauge - 16 gauge (.003" - (.008"))</p> <p>operational thickness dependent upon panel size</p>	<p>MATERIALS</p> <p>STAINLESS STEEL + ZALMAG®</p>	<p>FINISH</p> <p>STAINLESS: BRIGHT (BA), MILL (2B)</p> <p>ZALMAG: NATURAL, PRE-PATINA II, KUANI GREEN, BARNA BRONZE</p>
			<p>SIZES AVAILABLE</p> <p>Maximum Width: 20" Maximum Length: 120"</p>	


Flat-Lock Panel

DETAIL
6B

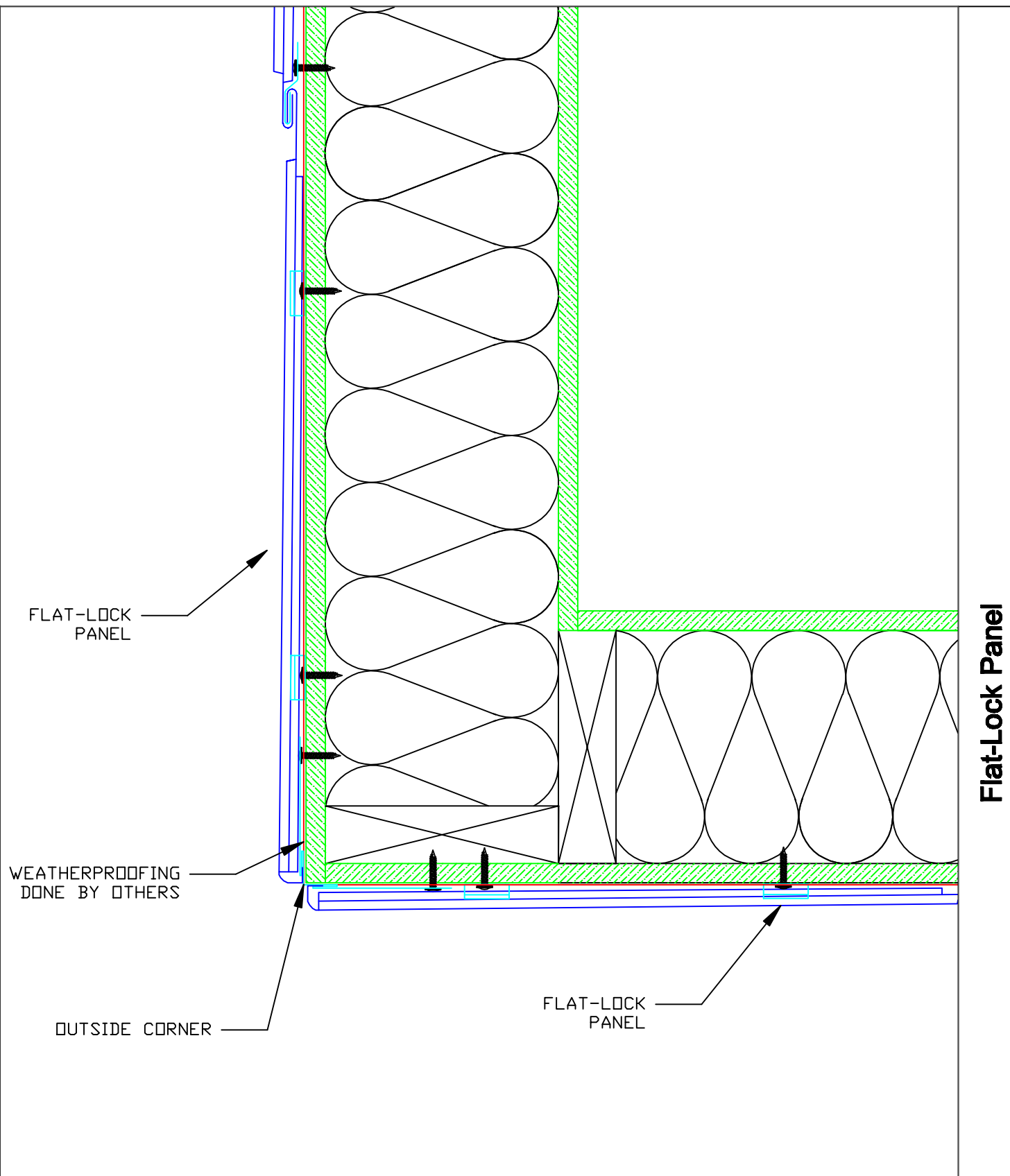


Flat-Lock Panel


Flat-Lock Panel - Outside Corner (3-Piece)

 <p>Millennium tiles</p> <p><small>*The physics of Light Interference Color (LIC) prevent colored stainless steel from being 100% uniform</small></p>	*STAINLESS COLORS	GA. AVAILABLE	MATERIALS	FINISH
	NATURAL, FEWTER, WHEAT, BRONZE, BLUE, SLATE, BRONZE-GOLD, BURGUNDY, PURPLE-BLUE, PEACOCK, BLUE-GREEN, CHARCOAL (94/SCOTCHBRITE FINISH ONLY)	24 gauge - 16 gauge (.008" - .0085") operational thickness dependent upon panel sizes	STAINLESS STEEL + ZALMAG®	STAINLESS: BRIGHT (BA), MILL (2B)
			SIZES AVAILABLE Maximum Width: 80" Maximum Length: 120"	ZALMAG: NATURAL, PRE-PATINA II, KUANI GREEN, BARNA BRONZE

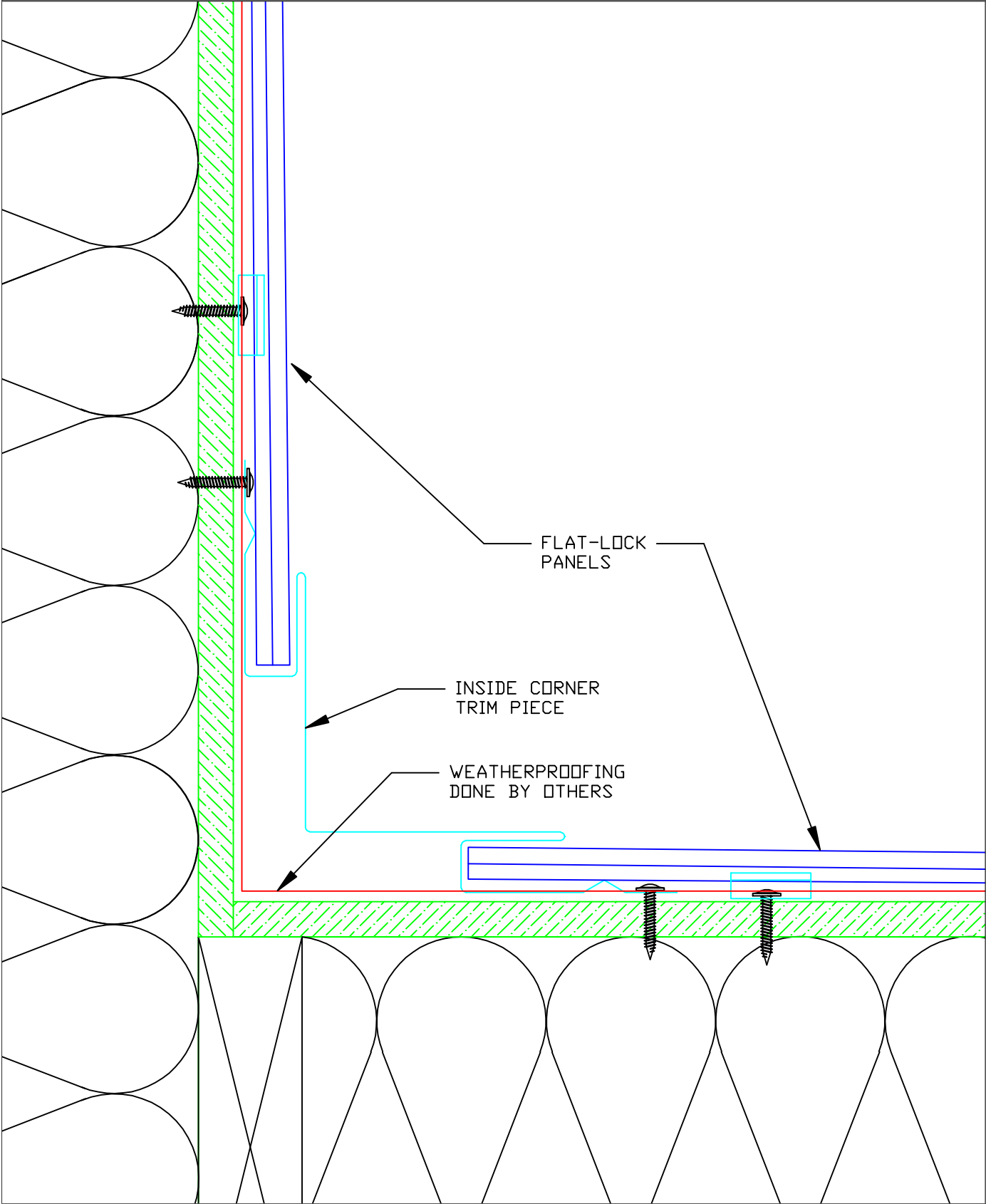
DETAIL
7A



Flat-Lock Panel - Outside Corner (1-Piece)


 <p><small>*The physics of Light Interference Color (LIC) prevent colored stainless steel from being 100% uniform</small></p>	<p>*STAINLESS COLORS</p> <p>NATURAL, FEWTER, WHEAT, BRONZE, BLUE, SLATE, BRONZE-GOLD, BURGUNDY, PURPLE-BLUE, PEACOCK, BLUE-GREEN, CHARCOAL (34/SCOTCHBRITE FINISH ONLY)</p>	<p>GA. AVAILABLE</p> <p>24 gauge - 16 gauge (.003" - .008")</p> <p><small>operational thickness dependent upon panel size</small></p>	<p>MATERIALS</p> <p>STAINLESS STEEL + ZALMAG®</p>	<p>FINISH</p> <p>STAINLESS: BRIGHT (BA), MILL (2B)</p> <p>ZALMAG: NATURAL, PRE-PATINA II, KUANI GREEN, BARNA BRONZE</p>
			<p>SIZES AVAILABLE</p> <p>Maximum Width: 20" Maximum Length: 120"</p>	

DETAIL
7B



Flat-Lock Panel

Flat-Lock Panel - Inside Corner



Millennium tiles

*The physics of Light Interference Color (LIC) prevent colored stainless steel from being 100% uniform

*STAINLESS COLORS
NATURAL, FEWTER, WHEAT, BRONZE, BLUE, SLATE, BRONZE-GOLD, BURGUNDY, PURPLE-BLUE, PEACOCK, BLUE-GREEN, CHARCOAL (94/SCOTCHBRITE FINISH ONLY)

GA. AVAILABLE
24 gauge - 16 gauge (.003" - .008")
operational thickness dependent upon panel size

MATERIALS
STAINLESS STEEL + ZALMAG®
SIZES AVAILABLE
Maximum Width: 20" Maximum Length: 120"

FINISH
STAINLESS: BRIGHT (BA), MILL (2B)
ZALMAG: NATURAL, PRE-PATINA II, KUANI GREEN, BARNA BRONZE

WEATHERPROOFING
DONE BY OTHERS

ZEE ATTACHMENT MAY
BE RUN VERTICALLY
OR HORIZONTALLY,
HORIZONTAL ZEE MUST
PROVIDE DRAINAGE

25 PSI FOAM

STUD

Flat-Lock Panel - Wall Assembly Over Exterior Insulation



*The physics of Light Interference Color (LIC) prevent colored stainless steel from being 100% uniform

STAINLESS COLORS
NATURAL, PEWTER, WHEAT, BRONZE,
BLUE, SLATE, BRONZE-GOLD,
BURGUNDY, PURPLE-BLUE, PEACOCK,
BLUE-GREEN, CHARCOAL
(#4/800TCBRITE FINISH ONLY)

G.A. AVAILABLE
24 gauge - 16 gauge
(.008") - (.005")
operational thickness dependent
upon panel size

MATERIALS
*STAINLESS STEEL + ZALMAG®
SIZES AVAILABLE
Maximum Width: 20"
Maximum Length: 120"

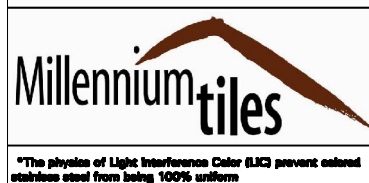
FINISH
STAINLESS: BRIGHT (#A), MILL (#B)
ZALMAG: NATURAL,
PRE-PATINA II, KUANI
GREEN, BARNA
BRONZE

ZEE ATTACHMENT MAY
BE RUN VERTICALLY
OR HORIZONTALLY,
HORIZONTAL ZEE MUST
PROVIDE DRAINAGE

WEATHERPROOFING
DONE BY OTHERS

STUD

Flat-Lock Panel - Wall Assembly Over Plywood



STAINLESS COLORS	GA. AVAILABLE	MATERIALS	FINISH
NATURAL, PEWTER, WHEAT, BRONZE, BLUE, SLATE, BRONZE-GOLD, BURGUNDY, PURPLE-BLUE, PEACOCK, BLUE-GREEN, CHARCOAL (#4/SCOTCHBRITE FINISH ONLY)	24 gauge - 16 gauge (.008") - (.0035") operational thickness dependent upon panel size	*STAINLESS STEEL + ZALMAG®	STAINLESS: BRIGHT (BA), MILL (2B) ZALMAG: NATURAL, PRE-PATINA II, KUANI GREEN, BARNA BRONZE
		SIZES AVAILABLE	
		Maximum Width: 20" Maximum Length: 120"	