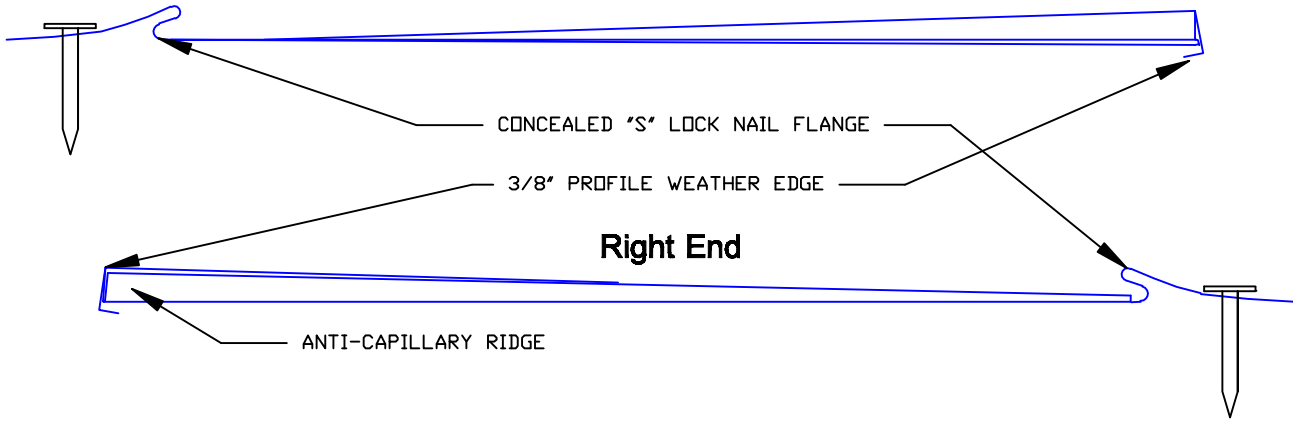
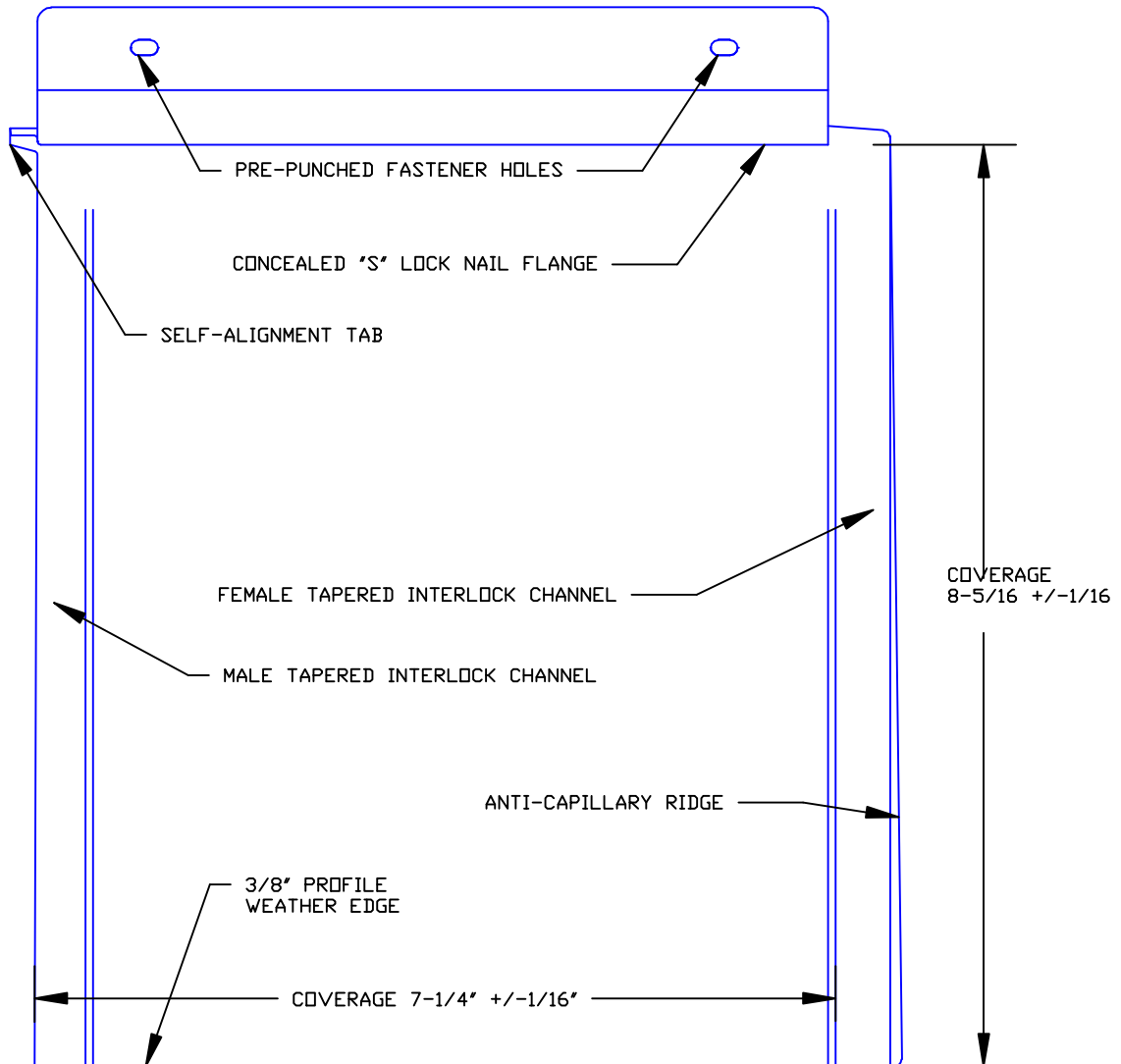


## Left End




## Right End

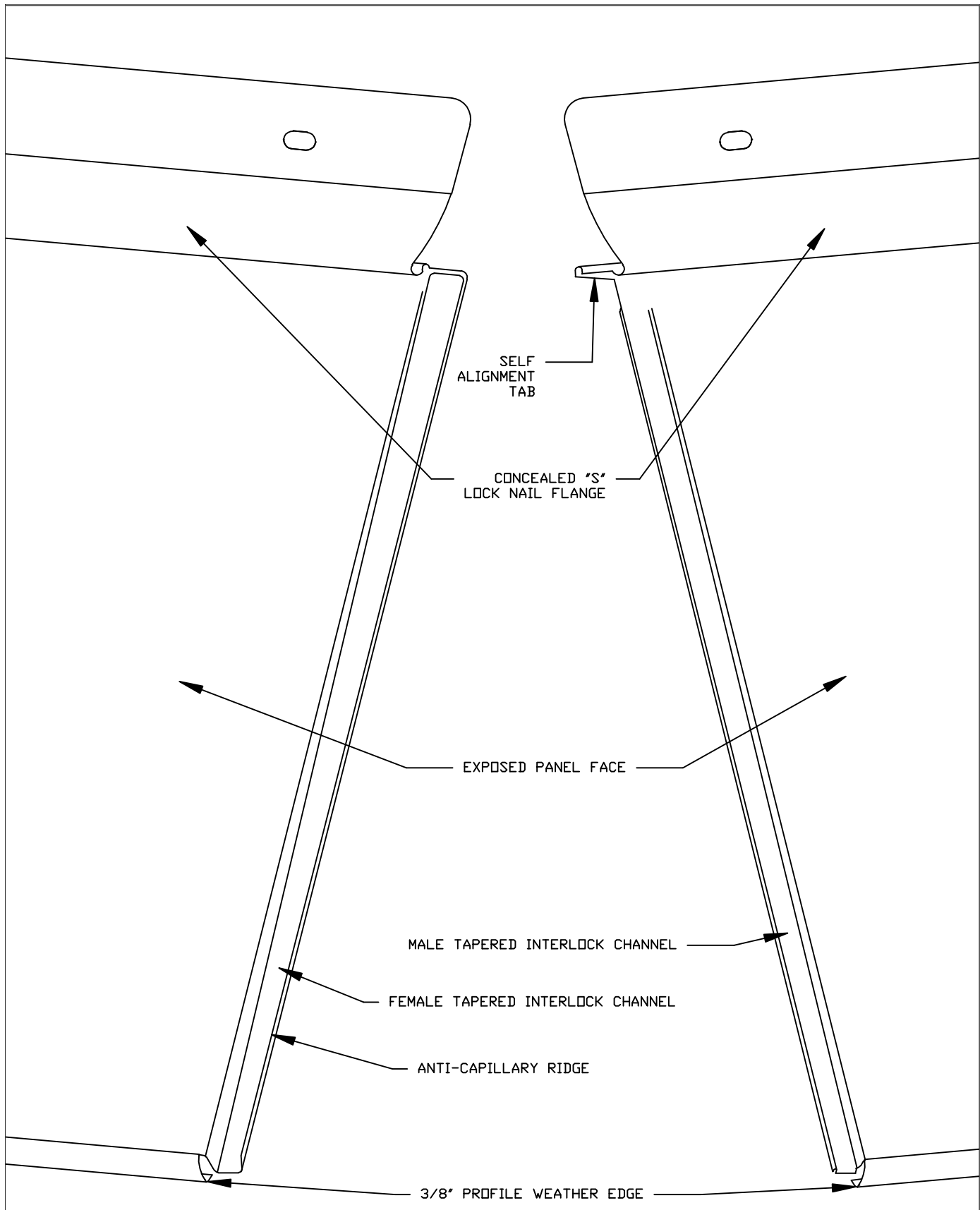
ANTI-CAPILLARY RIDGE



Diamond Tile

## Diamond Tile - Profile Details

 <p><b>Millennium tiles</b></p> <p><small>*The physics of Light Interference Color (LIC) prevent colored stainless steel from being 100% uniform</small></p>	<p><b>*STAINLESS COLORS</b></p> <p>NATURAL, PEWTER, WHEAT, BRONZE, BLUE, SLATE, BRONZE-GOLD, BURGUNDY, PURPLE-BLUE, PEACOCK, BLUE-GREEN, CHARCOAL (94/SCOTCHBRITE FINISH ONLY)</p>	<p><b>GA. AVAILABLE</b></p> <p>28 GAUGE (.016")</p>	<p><b>MATERIALS</b></p> <p>STAINLESS STEEL + ZALMAG®</p>	<p><b>FINISH</b></p> <p>STAINLESS: BRIGHT (BA), MILL (2B)</p> <p>ZALMAG: NATURAL, PRE-PATINA II, KUANI GREEN, BARNA BRONZE</p>
			<p><b>SIZES AVAILABLE</b></p> <p>8 1/8" x 7 1/4"</p>	



Diamond Tile

Diamond Tile - Vertical Joint Detail

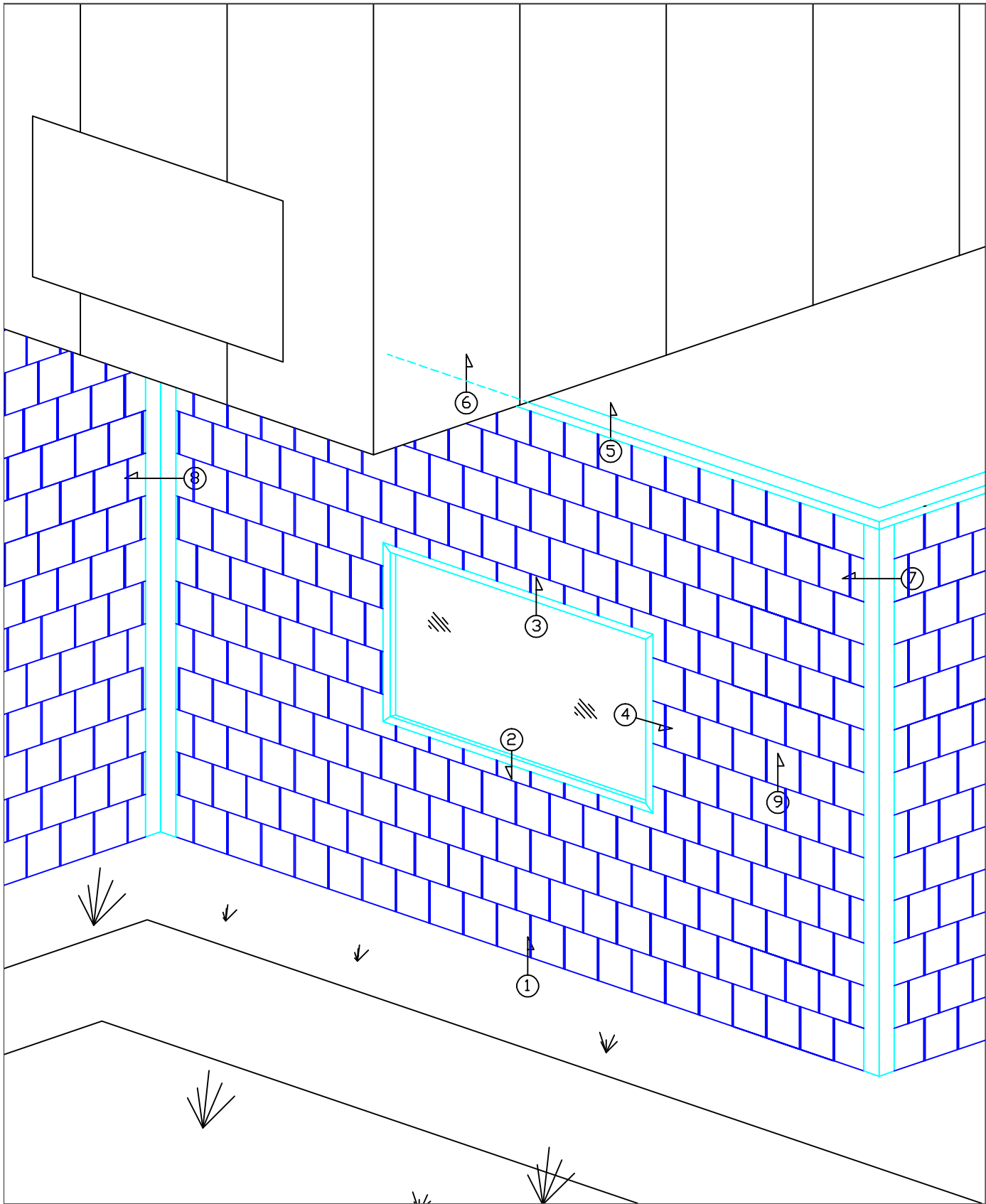
\*The physics of Light Interference Color (LIC) prevent colored stainless steel from being 100% uniform

*STAINLESS COLORS
NATURAL, PEWTER, WHEAT, BRONZE, BLUE, SLATE, BRONZE-GOLD, BURGUNDY, PURPLE-BLUE, PEACOCK, BLUE-GREEN, CHARCOAL (94/SCOTCHBRITE FINISH ONLY)

GA. AVAILABLE
28 GAUGE (.016")


MATERIALS
STAINLESS STEEL + ZALMAG®
SIZES AVAILABLE
8 1/8" x 7 1/4"

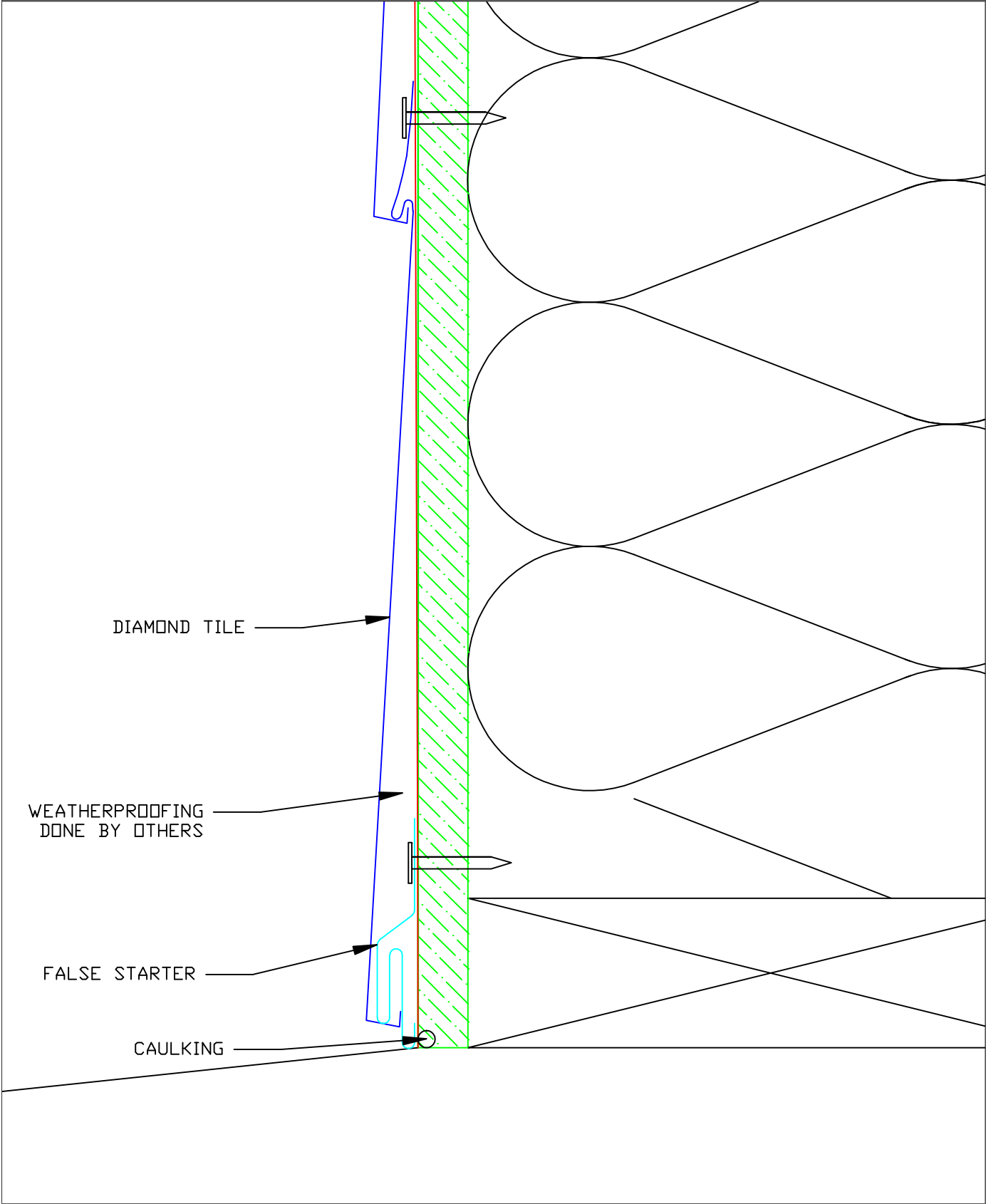
FINISH
STAINLESS: BRIGHT (BA), MILL (2B)
ZALMAG: NATURAL, PRE-PATINA II, KUANI GREEN, BARNA BRONZE



Diamond Tile


Diamond Tile - Detail Wall

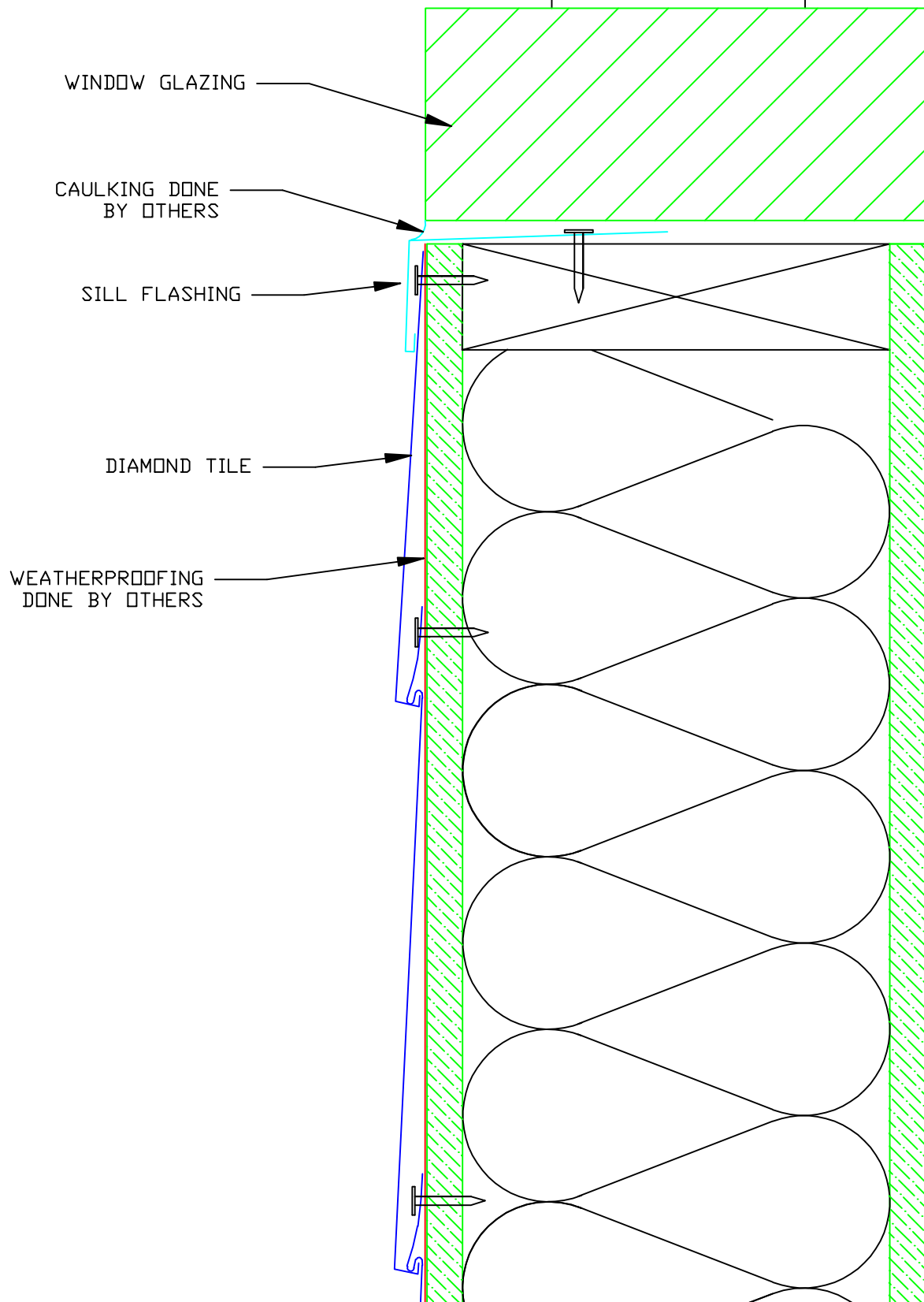
 <p><small>*The physics of Light Interference Color (LIC) prevent colored stainless steel from being 100% uniform</small></p>	<b>*STAINLESS COLORS</b> NATURAL, PEWTER, WHEAT, BRONZE, BLUE, SLATE, BRONZE-GOLD, BURGUNDY, PURPLE-BLUE, PEACOCK, BLUE-GREEN, CHARCOAL (94/SCOTCHBRITE FINISH ONLY)	<b>GA. AVAILABLE</b> 28 GAUGE (.016")	<b>MATERIALS</b> STAINLESS STEEL + ZALMAG®	<b>FINISH</b> STAINLESS: BRIGHT (BA), MILL (2B) ZALMAG: NATURAL, PRE-PATINA II, KUANI GREEN, BARNA BRONZE
			<b>SIZES AVAILABLE</b> 8 1/8" x 7 1/4"	



Diamond Tile


Diamond Tile - Starter / False Starter

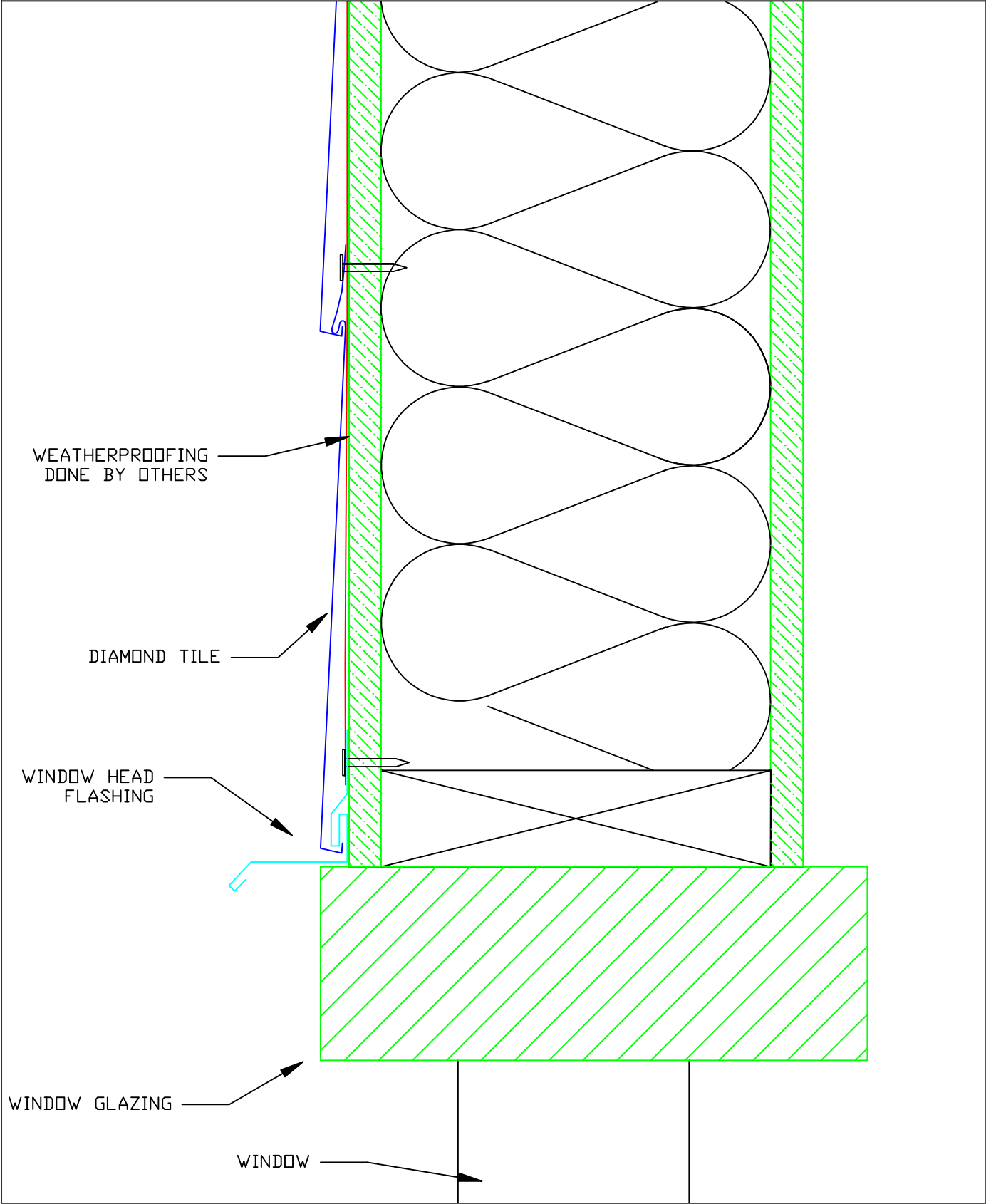
 <small>*The physics of Light Interference Color (LIC) prevent colored stainless steel from being 100% uniform</small>	<b>*STAINLESS COLORS</b> NATURAL, PEWTER, WHEAT, BRONZE, BLUE, SLATE, BRONZE-GOLD, BURGUNDY, PURPLE-BLUE, PEACOCK, BLUE-GREEN, CHARCOAL (94/SCOTCHBRITE FINISH ONLY)	<b>GA. AVAILABLE</b> 28 GAUGE (.016")	<b>MATERIALS</b> STAINLESS STEEL + ZALMAG®	<b>FINISH</b> STAINLESS: BRIGHT (BA), MILL (2B) ZALMAG: NATURAL, PRE-PATINA II, KUANI GREEN, BARNA BRONZE
			<b>SIZES AVAILABLE</b>	
			8 1/8" x 7 1/4"	



Diamond Tile


Diamond Tile - Window Sill

 <p><b>Millennium tiles</b></p> <p><small>*The physics of Light Interference Color (LIC) prevent colored stainless steel from being 100% uniform</small></p>	<p><b>*STAINLESS COLORS</b></p> <p>NATURAL, PEWTER, WHEAT, BRONZE, BLUE, SLATE, BRONZE-GOLD, BURGUNDY, PURPLE-BLUE, PEACOCK, BLUE-GREEN, CHARCOAL (94/SCOTCHBRITE FINISH ONLY)</p>	<p><b>GA. AVAILABLE</b></p> <p>28 GAUGE (.016")</p>	<p><b>MATERIALS</b></p> <p>STAINLESS STEEL + ZALMAG®</p>	<p><b>FINISH</b></p> <p>STAINLESS: BRIGHT (BA), MILL (2B)</p> <p>ZALMAG: NATURAL, PRE-PATINA II, KUANI GREEN, BARNA BRONZE</p>
			<p><b>SIZES AVAILABLE</b></p> <p>8 1/8" x 7 1/4"</p>	

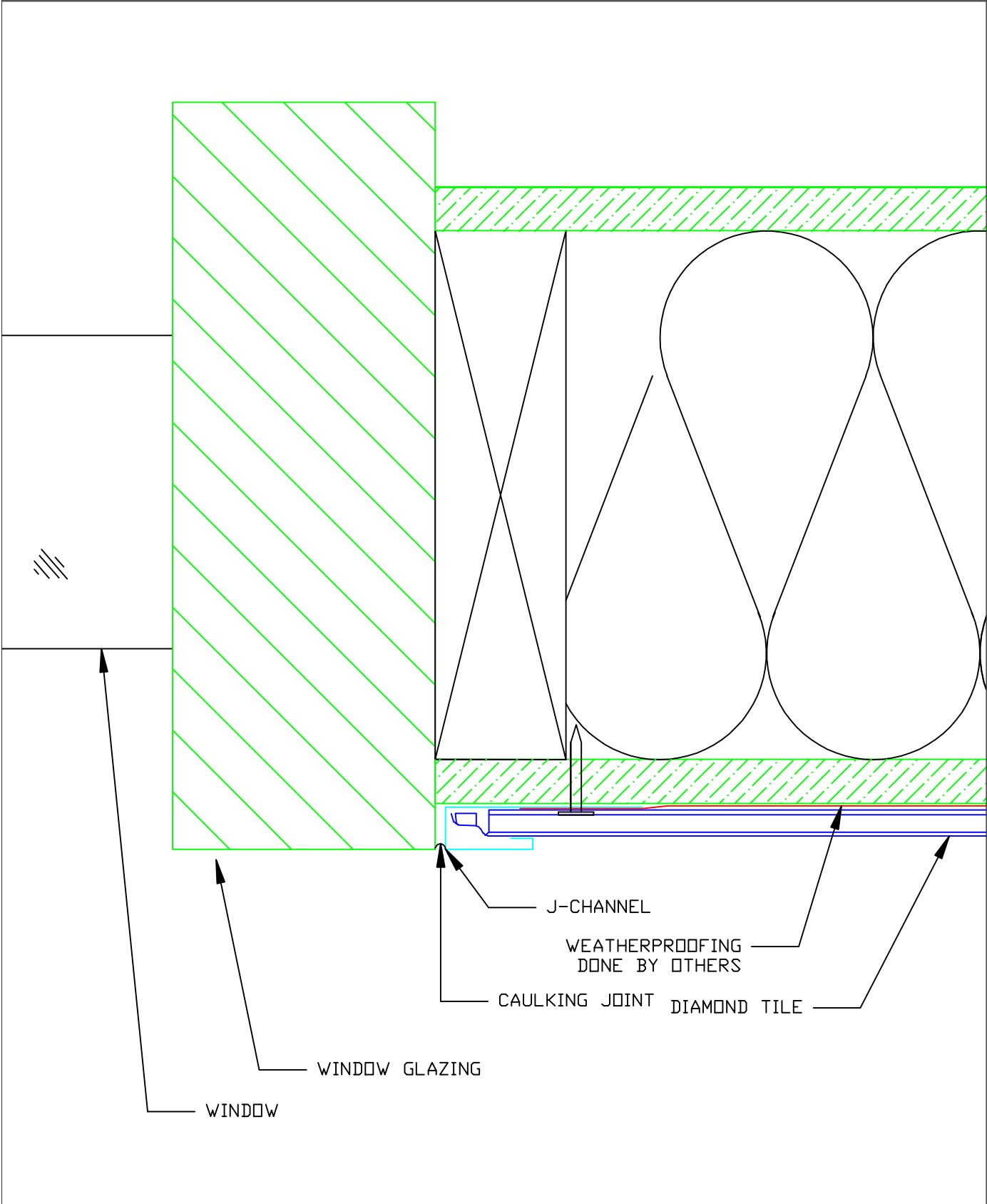


Diamond Tile


Diamond Tile - Window Head

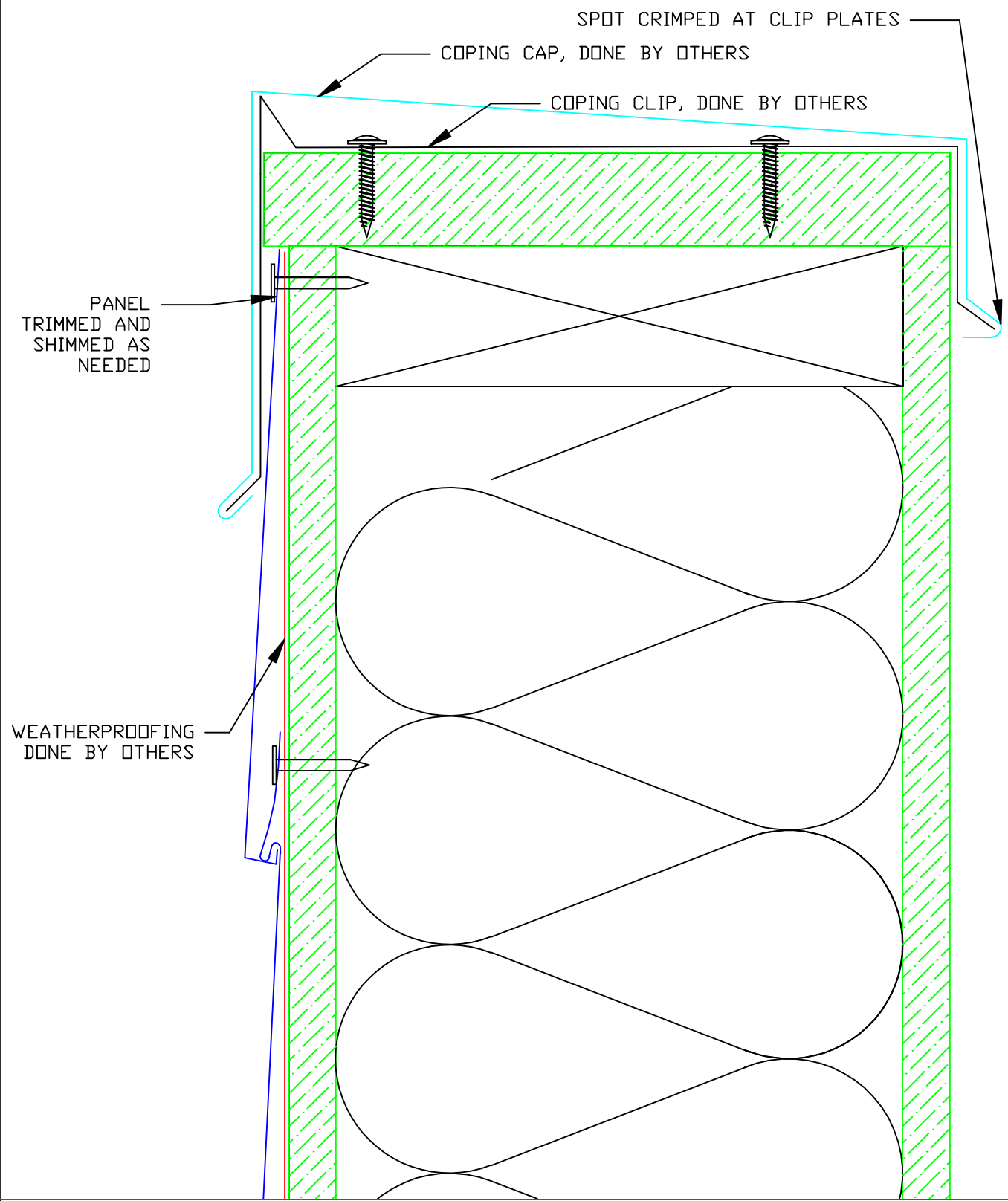
 <small>*The physics of Light Interference Color (LIC) prevent colored stainless steel from being 100% uniform</small>	<b>*STAINLESS COLORS</b> NATURAL, PEWTER, WHEAT, BRONZE, BLUE, SLATE, BRONZE-GOLD, BURGUNDY, PURPLE-BLUE, PEACOCK, BLUE-GREEN, CHARCOAL (#4/800TCHBRITE FINISH ONLY)	<b>GA. AVAILABLE</b> 28 GAUGE (.016")	<b>MATERIALS</b> STAINLESS STEEL + ZALMAG®	<b>FINISH</b> STAINLESS: BRIGHT (BA), MILL (2B) ZALMAG: NATURAL, PRE-PATINA II, KUANI GREEN, BARNA BRONZE
			<b>SIZES AVAILABLE</b>	
			8 1/8" x 7 1/4"	

DETAIL  
3A




Diamond Tile - Window Jam

 <small>*The physics of Light Interference Color (LIC) prevent colored stainless steel from being 100% uniform</small>	<b>*STAINLESS COLORS</b> NATURAL, FEWTER, WHEAT, BRONZE, BLUE, SLATE, BRONZE-GOLD, BURGUNDY, PURPLE-BLUE, PEACOCK, BLUE-GREEN, CHARCOAL (94/SCOTCHBRITE FINISH ONLY)	<b>GA. AVAILABLE</b> 28 GAUGE (.016")	<b>MATERIALS</b> STAINLESS STEEL + ZALMAG®	<b>FINISH</b> STAINLESS: BRIGHT (BA), MILL (2B) ZALMAG: NATURAL, PRE-PATINA II, KUANI GREEN, BARNA BRONZE
			<b>SIZES AVAILABLE</b>	
			8 1/8" x 7 1/4"	

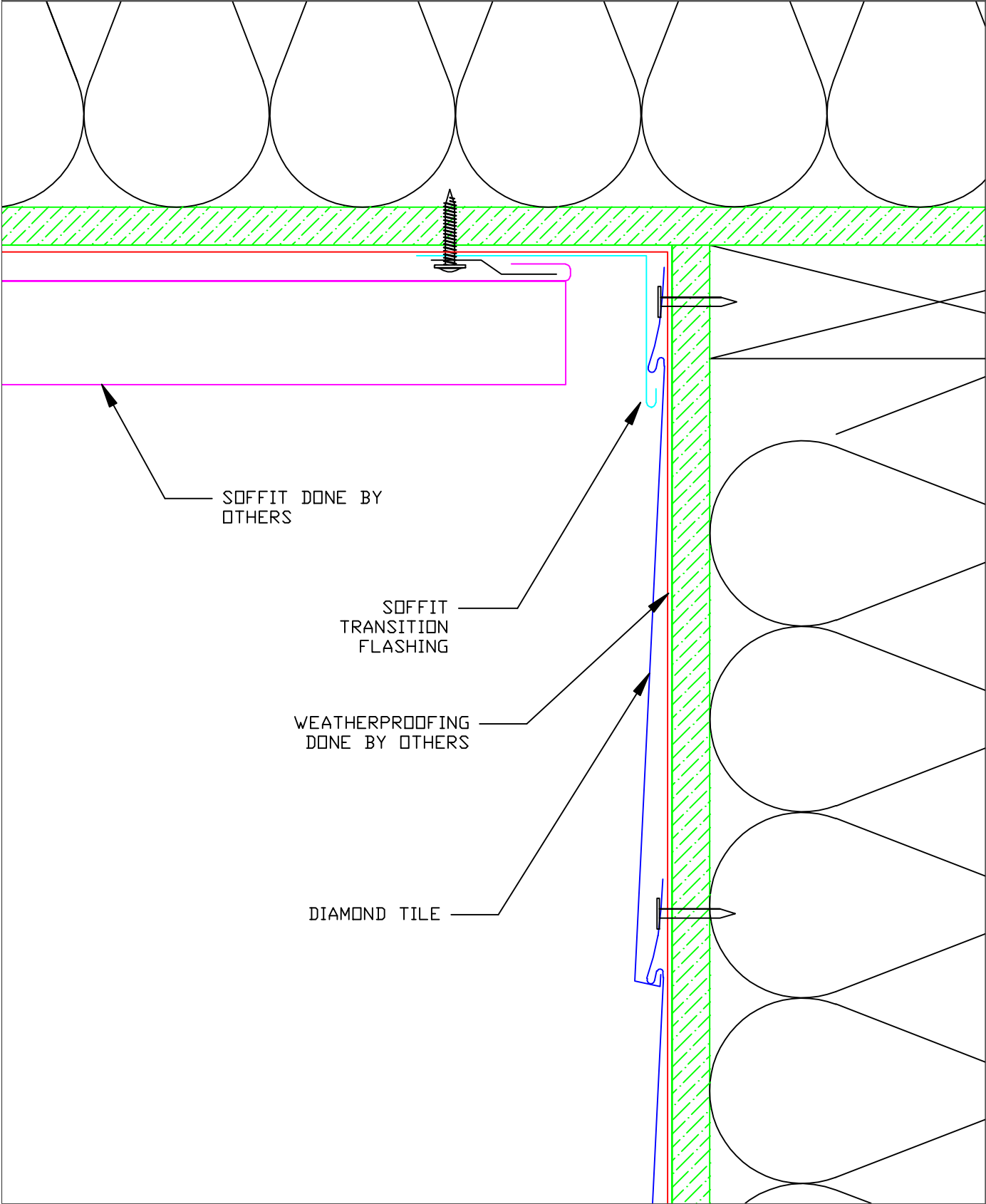


Diamond Tile

Diamond Tile - Coping


 <small>*The physics of Light Interference Color (LIC) prevent colored stainless steel from being 100% uniform</small>	<b>*STAINLESS COLORS</b> NATURAL, PEWTER, WHEAT, BRONZE, BLUE, SLATE, BRONZE-GOLD, BURGUNDY, PURPLE-BLUE, PEACOCK, BLUE-GREEN, CHARCOAL (#4/800TCHBRITE FINISH ONLY)	<b>GA. AVAILABLE</b> 28 GAUGE (.016")	<b>MATERIALS</b> STAINLESS STEEL + ZALMAG®	<b>FINISH</b> STAINLESS: BRIGHT (#A), MILL (#B) ZALMAG: NATURAL, PRE-PATINA II, KUANI GREEN, BARNA BRONZE
			<b>SIZES AVAILABLE</b>	
			8 1/8" x 7 1/4"	



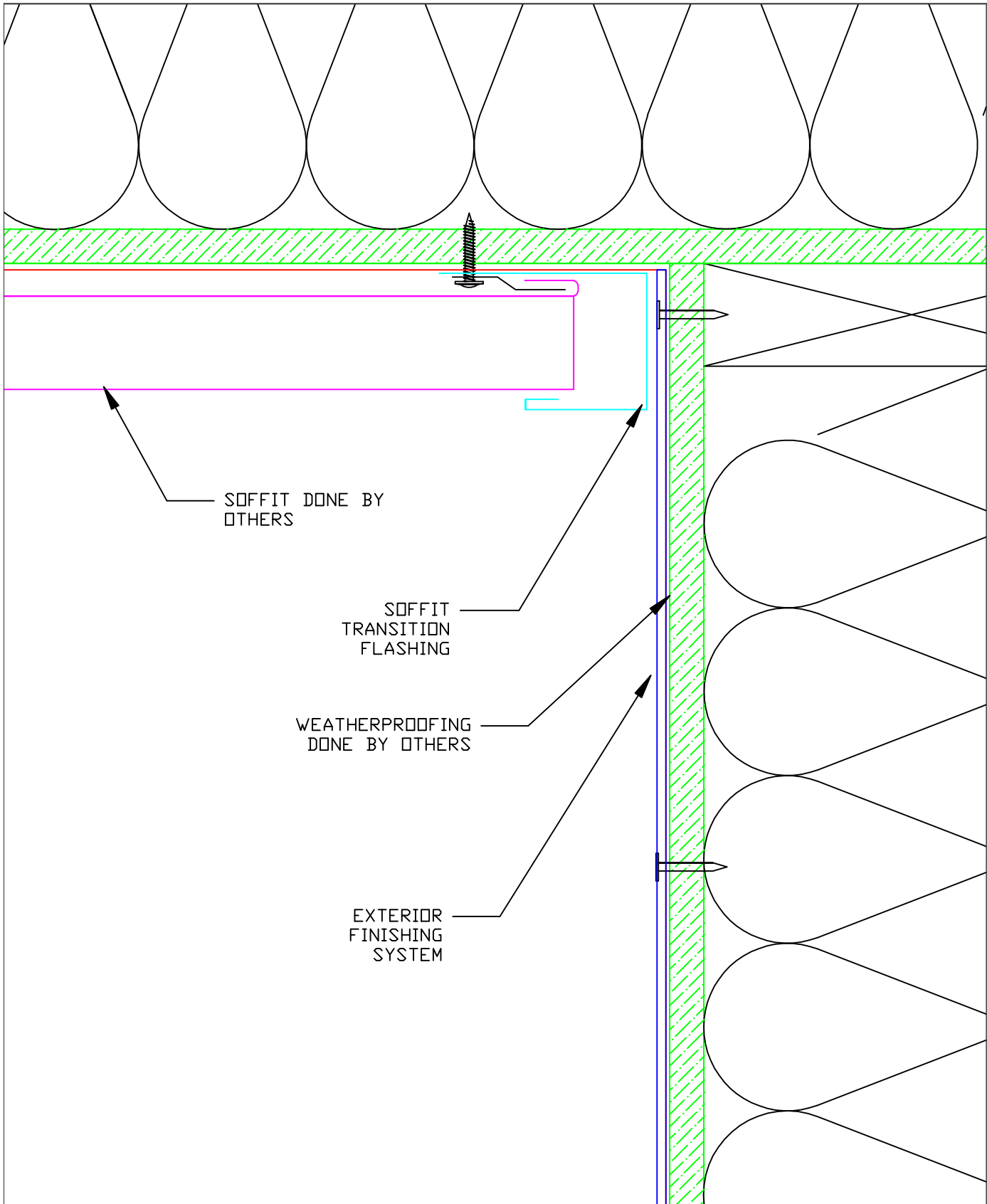


Diamond Tile

Diamond Tile - Termination at Soffit


<div><p>Millennium tiles</p></div> <div><p><small>*The physics of Light Interference Color (LIC) prevent colored stainless steel from being 100% uniform</small></p></div>	<div><p><b>*STAINLESS COLORS</b></p><p>NATURAL, FEWTER, WHEAT, BRONZE, BLUE, SLATE, BRONZE-GOLD, BURGUNDY, PURPLE-BLUE, PEACOCK, BLUE-GREEN, CHARCOAL (94/SCOTCHBRITE FINISH ONLY)</p></div>	<div><p><b>GA. AVAILABLE</b></p><p>28 GAUGE (.016")</p></div>	<div><p><b>MATERIALS</b></p><p>STAINLESS STEEL + ZALMAG®</p></div>	<div><p><b>FINISH</b></p><p>STAINLESS: BRIGHT (BA), MILL (2B)</p><p>ZALMAG: NATURAL, PRE-PATINA II, KUANI GREEN, BARNA BRONZE</p></div>
			<div><p><b>SIZES AVAILABLE</b></p><p>8 1/8" x 7 1/4"</p></div>	

DETAIL  
6A

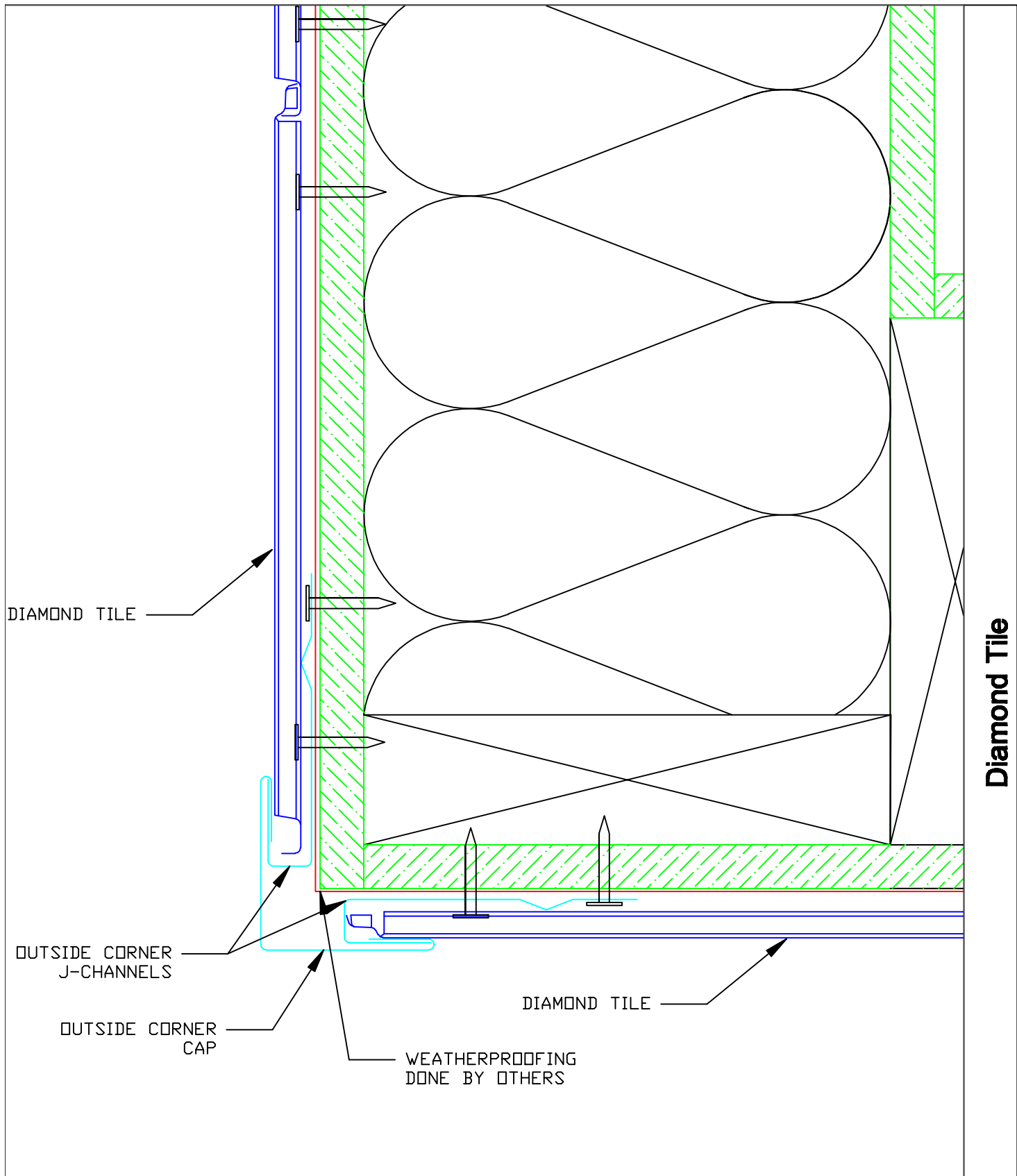


Diamond Tile

### Diamond Tile - Termination at Soffit

 <p><b>Millennium tiles</b></p> <p><small>*The physics of Light Interference Color (LIC) prevent colored stainless steel from being 100% uniform</small></p>	<p><b>*STAINLESS COLORS</b></p> <p>NATURAL, PEWTER, WHEAT, BRONZE, BLUE, SLATE, BRONZE-GOLD, BURGUNDY, PURPLE-BLUE, PEACOCK, BLUE-GREEN, CHARCOAL (94/SCOTCHBRITE FINISH ONLY)</p>	<p><b>GA. AVAILABLE</b></p> <p>28 GAUGE (.016")</p>	<p><b>MATERIALS</b></p> <p>STAINLESS STEEL + ZALMAG®</p>	<p><b>FINISH</b></p> <p>STAINLESS: BRIGHT (BA), MILL (2B)</p> <p>ZALMAG: NATURAL, PRE-PATINA II, KUANI GREEN, BARNA BRONZE</p>
			<p><b>SIZES AVAILABLE</b></p> <p>8 1/8" x 7 1/4"</p>	

DETAIL  
6B



**Diamond Tile - Outside Corner (3-Piece)**

**Millennium tiles**

\*The physics of Light Interference Color (LIC) prevent colored stainless steel from being 100% uniform

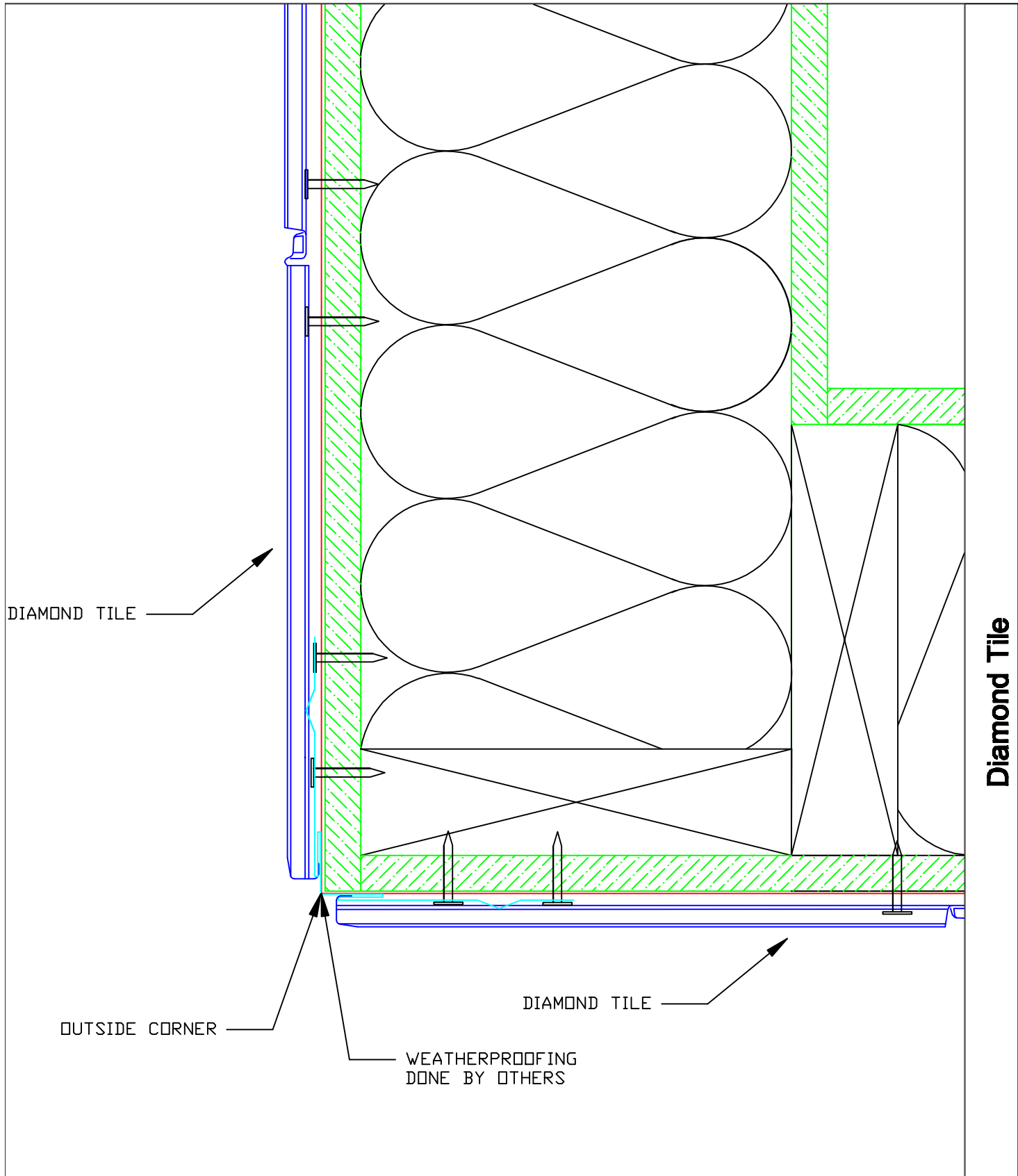
*STAINLESS COLORS
NATURAL, FEWTER, WHEAT, BRONZE, BLUE, SLATE, BRONZE-GOLD, BURGUNDY, PURPLE-BLUE, PEACOCK, BLUE-GREEN, CHARCOAL (34/SCOTCHBRITE FINISH ONLY)

GA. AVAILABLE
28 GAUGE (.016")

MATERIALS
STAINLESS STEEL + ZALMAG®
SIZES AVAILABLE
8 1/8" x 7 1/4"

FINISH
STAINLESS: BRIGHT (BA), MILL (2B)
ZALMAG: NATURAL, PRE-PATINA II, KUANI GREEN, BARNA BRONZE

DETAIL  
7A



Diamond Tile - Outside Corner (1-Piece)

**Millennium**  
tiles

\*The physics of Light Interference Color (LIC) prevent colored stainless steel from being 100% uniform

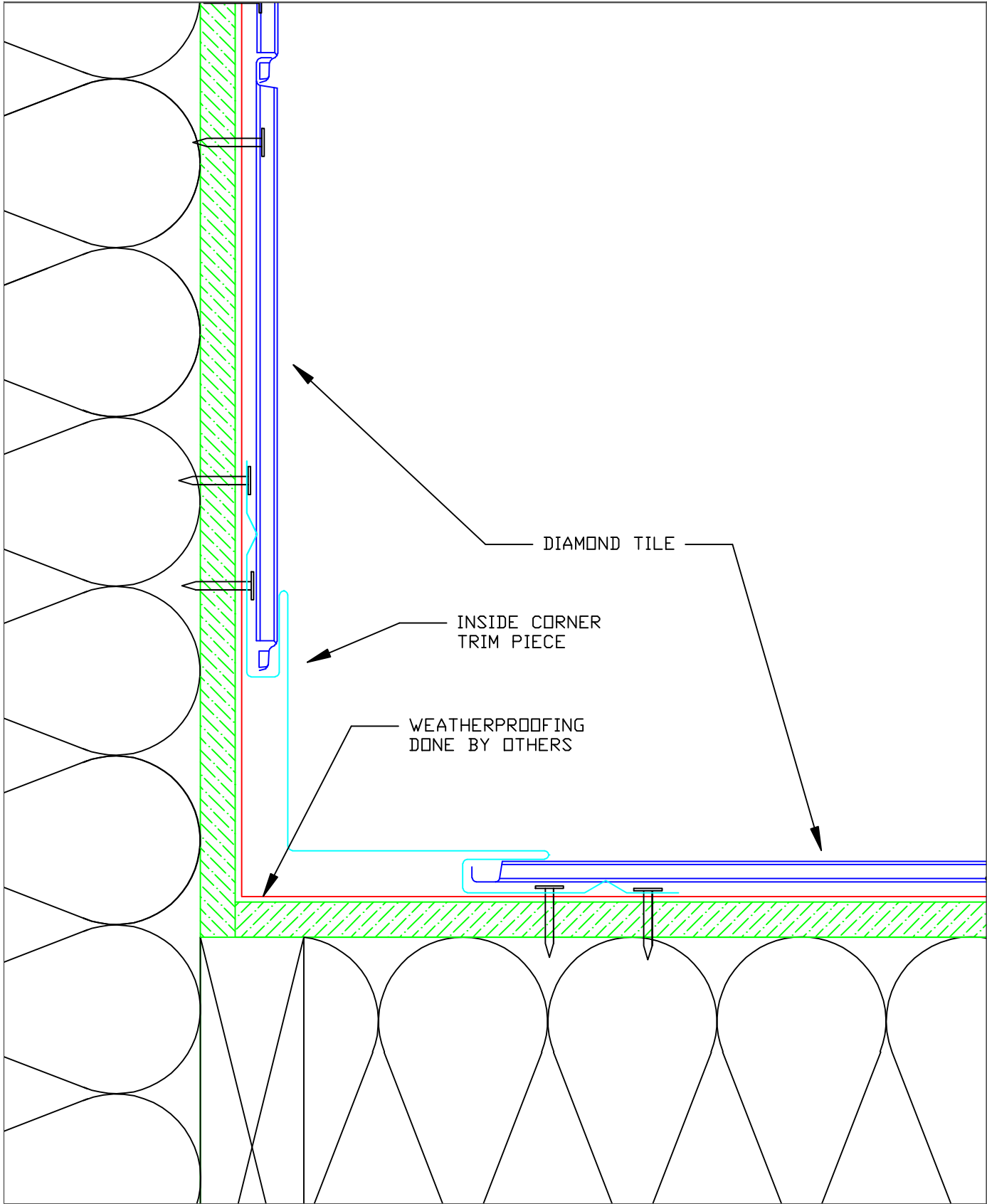
*STAINLESS COLORS
NATURAL, PEWTER, WHEAT, BRONZE, BLUE, SLATE, BRONZE-GOLD, BURGUNDY, PURPLE-BLUE, PEACOCK, BLUE-GREEN, CHARCOAL (94/SCOTCHBRITE FINISH ONLY)

GA. AVAILABLE
28 GAUGE (.016")

MATERIALS
STAINLESS STEEL + ZALMAG®
SIZES AVAILABLE
8 1/8" x 7 1/4"


FINISH
STAINLESS: BRIGHT (BA), MILL (2B)
ZALMAG: NATURAL, PRE-PATINA II, KUANI GREEN, BARNA BRONZE

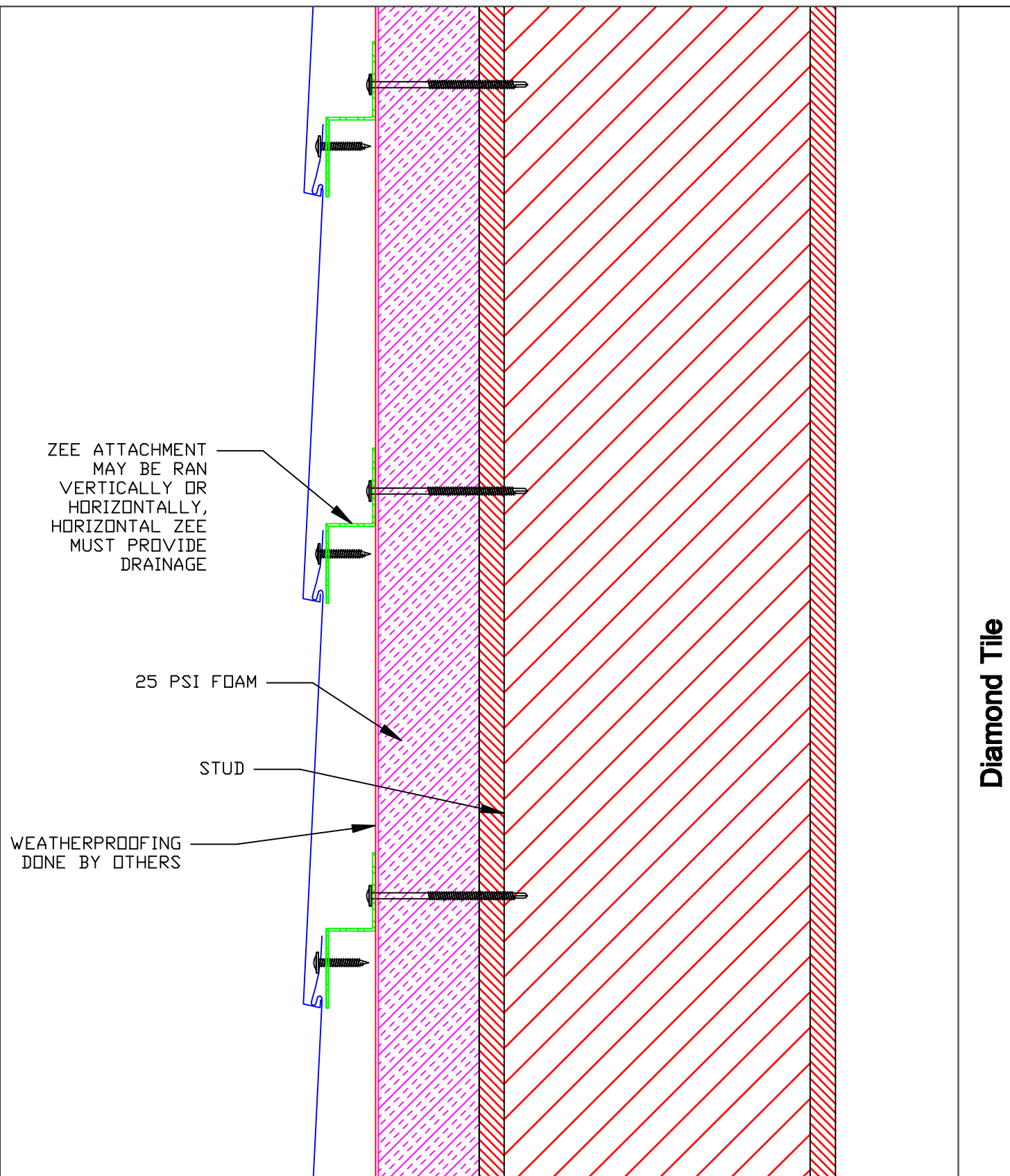
DETAIL  
7B



Diamond Tile

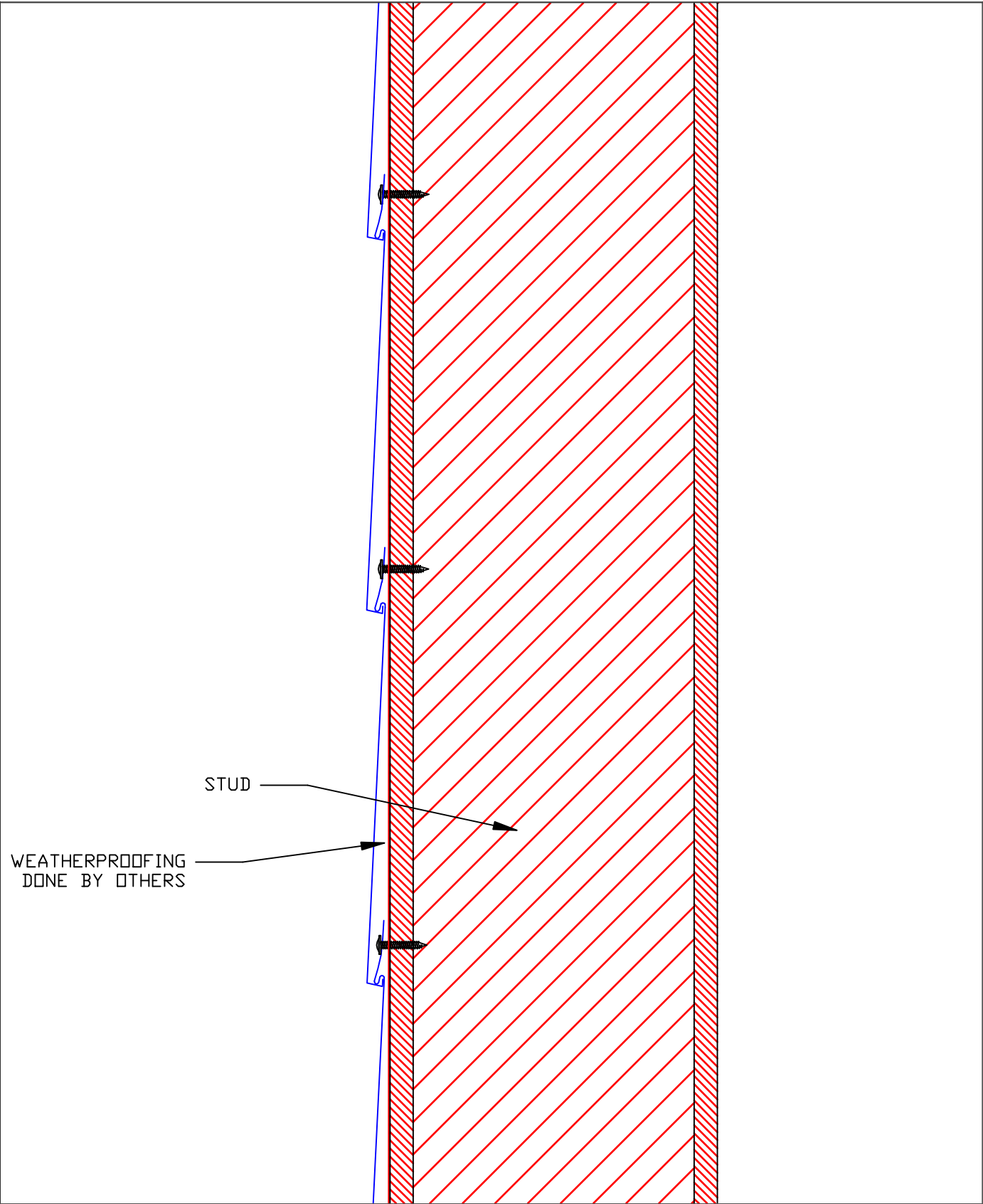
Diamond Tile - Inside Corner

<div><p><b>Millennium</b> <b>tiles</b></p></div> <div><p><small>*The physics of Light Interference Color (LIC) prevent colored stainless steel from being 100% uniform</small></p></div>	<div><p><b>*STAINLESS COLORS</b></p><p>NATURAL, FEWTER, WHEAT, BRONZE, BLUE, SLATE, BRONZE-GOLD, BURGUNDY, PURPLE-BLUE, PEACOCK, BLUE-GREEN, CHARCOAL (#4/SCOTCHBRITE FINISH ONLY)</p></div>	<div><p><b>GA. AVAILABLE</b></p><p>28 GAUGE (.016")</p></div>	<div><p><b>MATERIALS</b></p><p>STAINLESS STEEL + ZALMAG®</p></div>	<div><p><b>FINISH</b></p><p>STAINLESS: BRIGHT (BA), MILL (2B)</p><p>ZALMAG: NATURAL, PRE-PATINA II, KUANI GREEN, BARNA BRONZE</p></div>
			<div><p><b>SIZES AVAILABLE</b></p><p>8 1/8" x 7 1/4"</p></div>	




Diamond Tile - Wall Assembly Over Exterior Insulation

<div>  </div> <div> <p>*The physics of Light Interference Color (LIC) prevent colored stainless steel from being 100% uniform</p> </div>	<div> <p><b>*STAINLESS COLORS</b></p> <p>NATURAL, FEWTER, WHEAT, BRONZE, BLUE, SLATE, BRONZE-GOLD, BURGUNDY, PURPLE-BLUE, PEACOCK, BLUE-GREEN, CHARCOAL (94/SCOTCHBRITE FINISH ONLY)</p> </div>	<div> <p><b>GA. AVAILABLE</b></p> <p>28 GAUGE (.015")</p> </div>	<div> <p><b>MATERIALS</b></p> <p>STAINLESS STEEL + ZALMAG®</p> </div>	<div> <p><b>FINISH</b></p> <p>STAINLESS: BRIGHT (BA), MILL (2B)</p> <p>ZALMAG: NATURAL, PRE-PATINA II, KUANI GREEN, BARNA BRONZE</p> </div>
			<div> <p><b>SIZES AVAILABLE</b></p> <p>8 1/8" x 7 1/4"</p> </div>	



Diamond Tile

Diamond Tile - Wall Assembly Over Plywood

 <p><small>*The physics of Light Interference Color (LIC) prevent colored stainless steel from being 100% uniform</small></p>	<b>*STAINLESS COLORS</b> NATURAL, FEWTER, WHEAT, BRONZE, BLUE, SLATE, BRONZE-GOLD, BURGUNDY, PURPLE-BLUE, PEACOCK, BLUE-GREEN, CHARCOAL (#14/SCOTCHBRITE FINISH ONLY)	<b>GA. AVAILABLE</b> 28 GAUGE (.016")	<b>MATERIALS</b> STAINLESS STEEL + ZALMAG®	<b>FINISH</b> STAINLESS: BRIGHT (BA), MILL (2B) ZALMAG: NATURAL, PRE-PATINA II, KUANI GREEN, BARNA BRONZE
			<b>SIZES AVAILABLE</b> 8 1/8" x 7 1/4"	

DETAIL  
9B