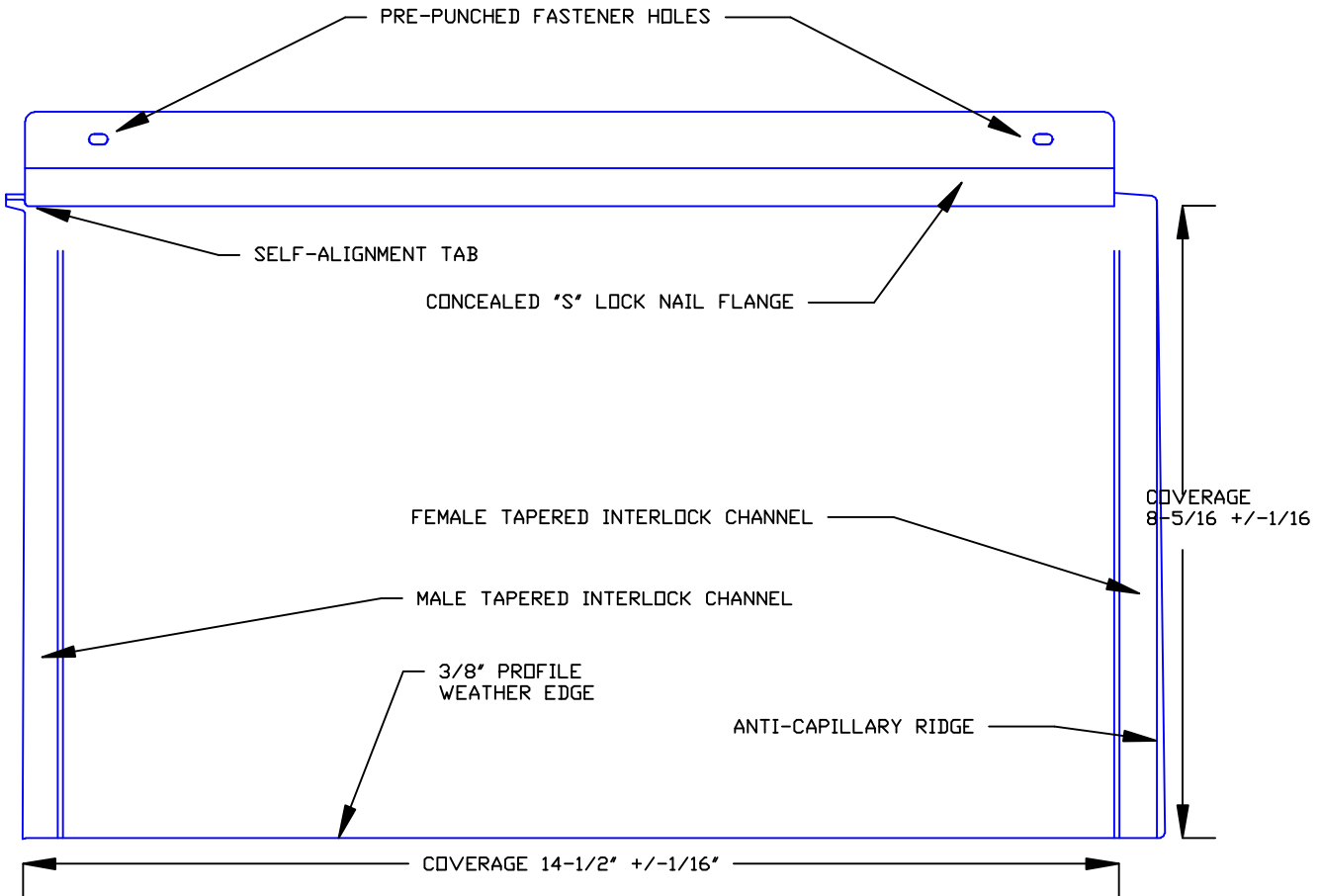
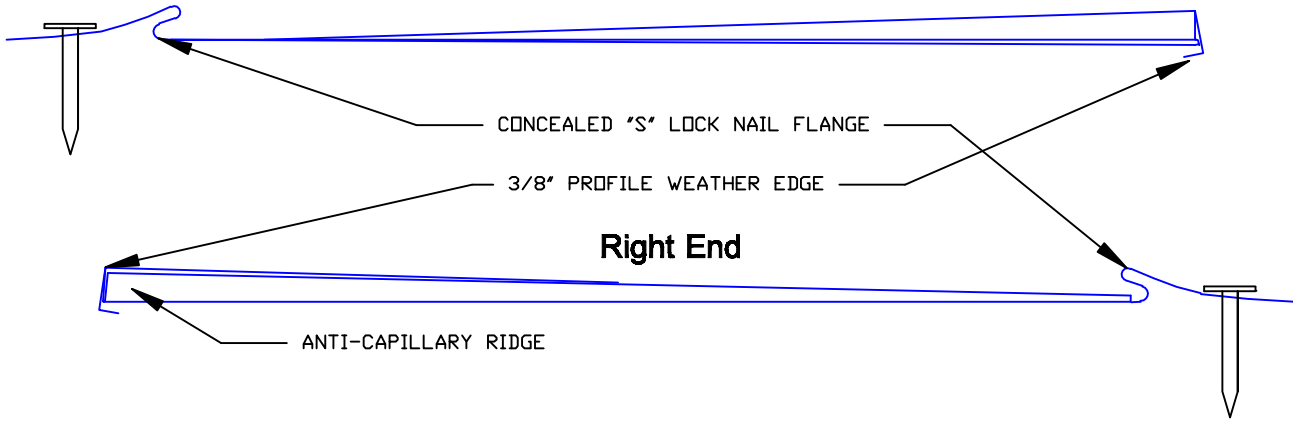

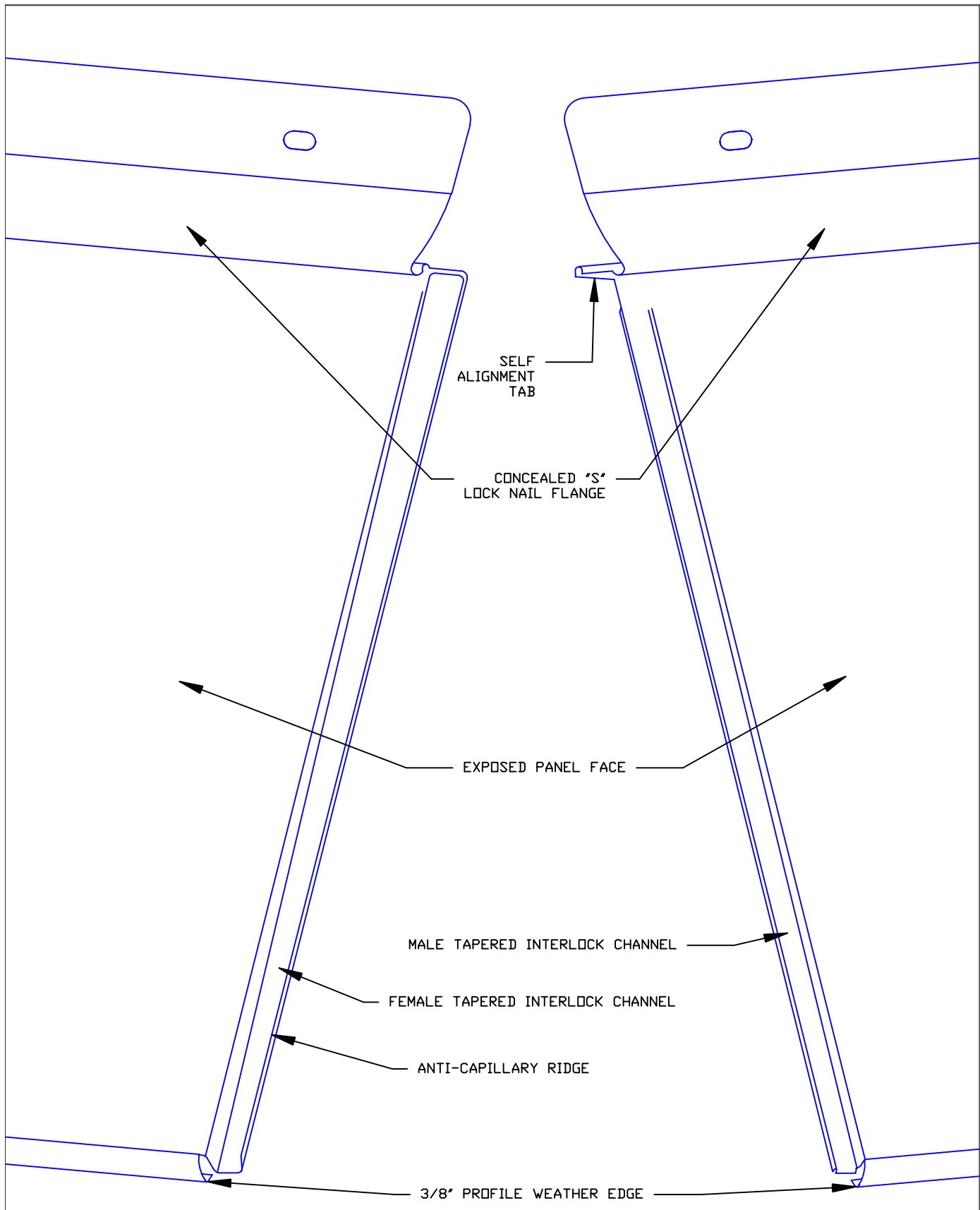


Left End



Large Flat Tile - Profile Details

 <p>Millennium tiles</p> <p><small>*The physics of Light Interference Color (LIC) prevent colored stainless steel from being 100% uniform</small></p>	<p>*STAINLESS COLORS</p> <p>NATURAL, PEWTER, WHEAT, BRONZE, BLUE, SLATE, BRONZE-GOLD, BURGUNDY, PURPLE-BLUE, PEACOCK, BLUE-GREEN, CHARCOAL (94/SCOTCHBRITE FINISH ONLY)</p>	<p>GA. AVAILABLE</p> <p>28 GAUGE (.016")</p>	<p>MATERIALS</p> <p>STAINLESS STEEL + ZALMAG®</p>	<p>FINISH</p> <p>STAINLESS: BRIGHT (BA), MILL (2B)</p> <p>ZALMAG: NATURAL, PRE-PATINA II, KUANI GREEN, BARNA BRONZE</p>
			<p>SIZES AVAILABLE</p> <p>8 3/8" x 14 1/2"</p>	



Large Flat Tile

Large Flat Tile - Vertical Joint Detail



*The physics of Light Interference Color (LIC) prevent colored stainless steel from being 100% uniform

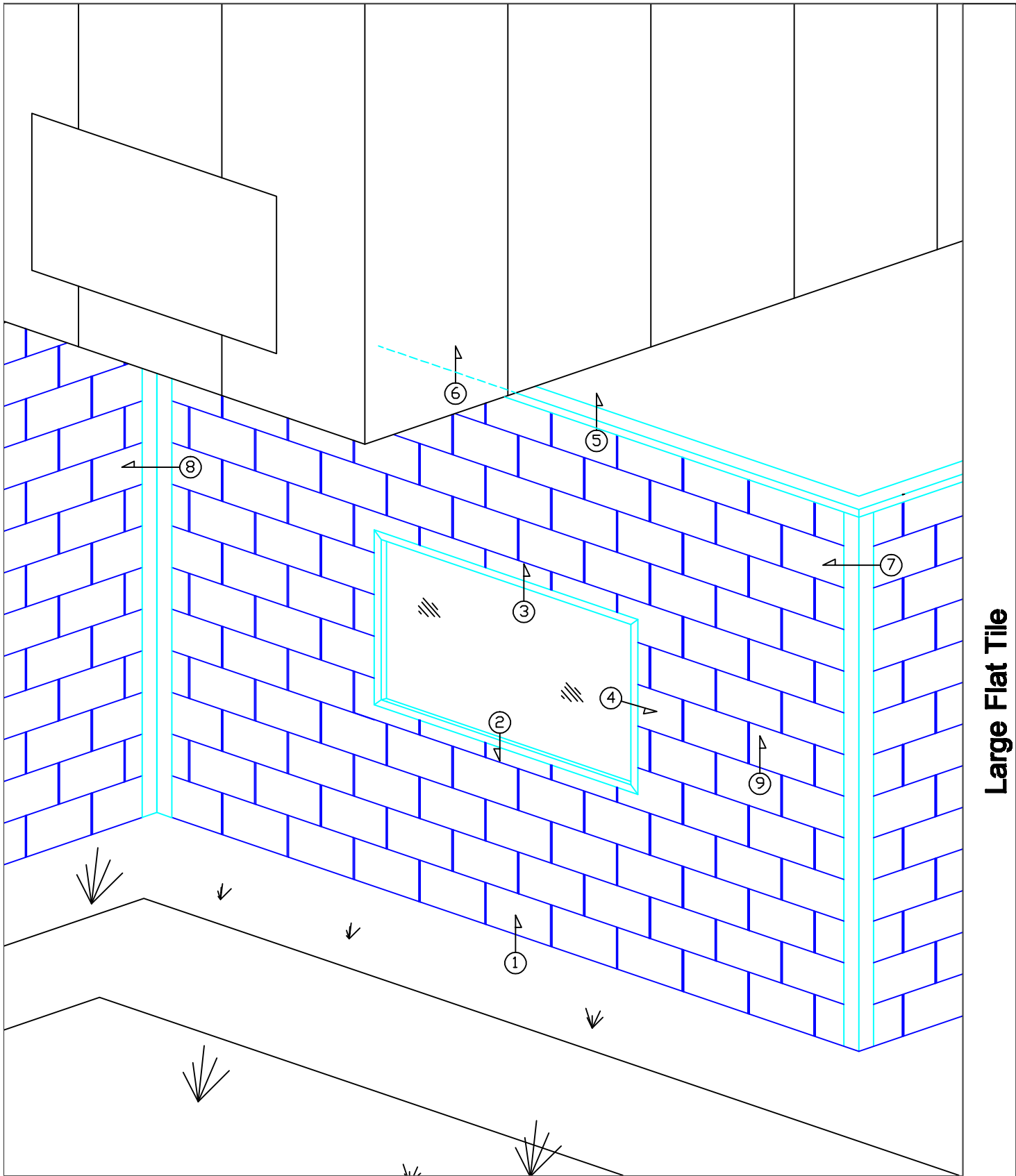
***STAINLESS COLORS**
NATURAL, PEWTER, WHEAT, BRONZE,
BLUE, SLATE, BRONZE-GOLD,
BURGUNDY, PURPLE-BLUE, PEACOCK,
BLUE-GREEN, CHARCOAL
(#4/SCOTCHBRITE FINISH ONLY)

GA. AVAILABLE
28 GAUGE (.016")

MATERIALS
STAINLESS STEEL + ZALMAG®


SIZES AVAILABLE
8 3/8" x 14 1/2"

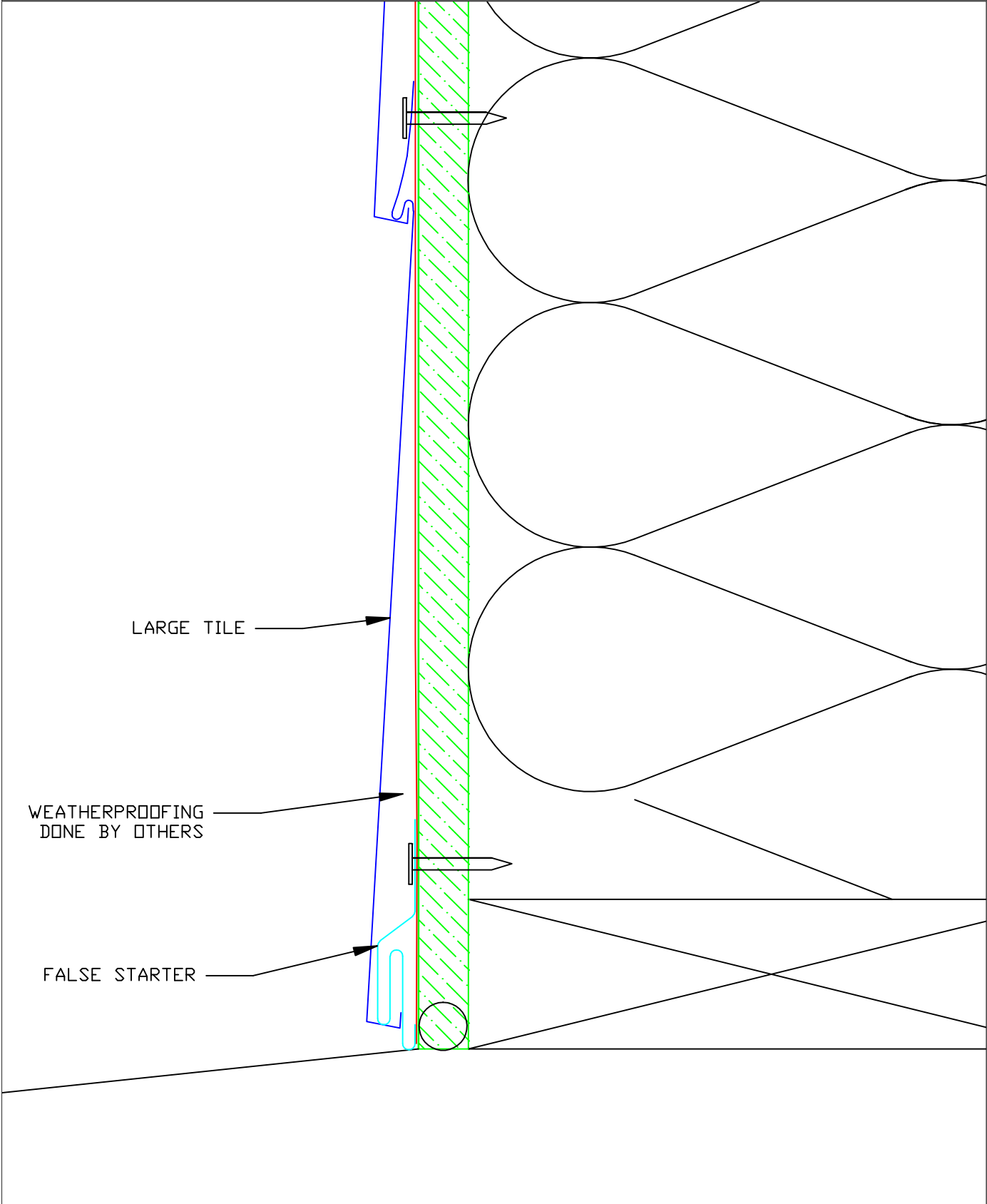
FINISH
STAINLESS: BRIGHT (BA), MILL (2B)
ZALMAG: NATURAL,
PRE-PATINA II, KUANI
GREEN, BARNA
BRONZE



Large Flat Tile


Large Flat Tile - Detail Wall

 <p>Millennium tiles</p> <p><small>*The physics of Light Interference Color (LIC) prevent colored stainless steel from being 100% uniform</small></p>	<p>*STAINLESS COLORS</p> <p>NATURAL, FEWTER, WHEAT, BRONZE, BLUE, SLATE, BRONZE-GOLD, BURGUNDY, PURPLE-BLUE, PEACOCK, BLUE-GREEN, CHARCOAL (94/SCOTCHBRITE FINISH ONLY)</p>	<p>GA. AVAILABLE</p> <p>28 GAUGE (.016")</p>	<p>MATERIALS</p> <p>STAINLESS STEEL + ZALMAG®</p>	<p>FINISH</p> <p>STAINLESS: BRIGHT (BA), MILL (2B)</p> <p>ZALMAG: NATURAL, PRE-PATINA II, KUANI GREEN, BARNA BRONZE</p>
			<p>SIZES AVAILABLE</p> <p>6 3/8" x 14 1/2"</p>	



Large Flat Tile

Large Flat Tile - Starter / False Starter



Millennium
tiles

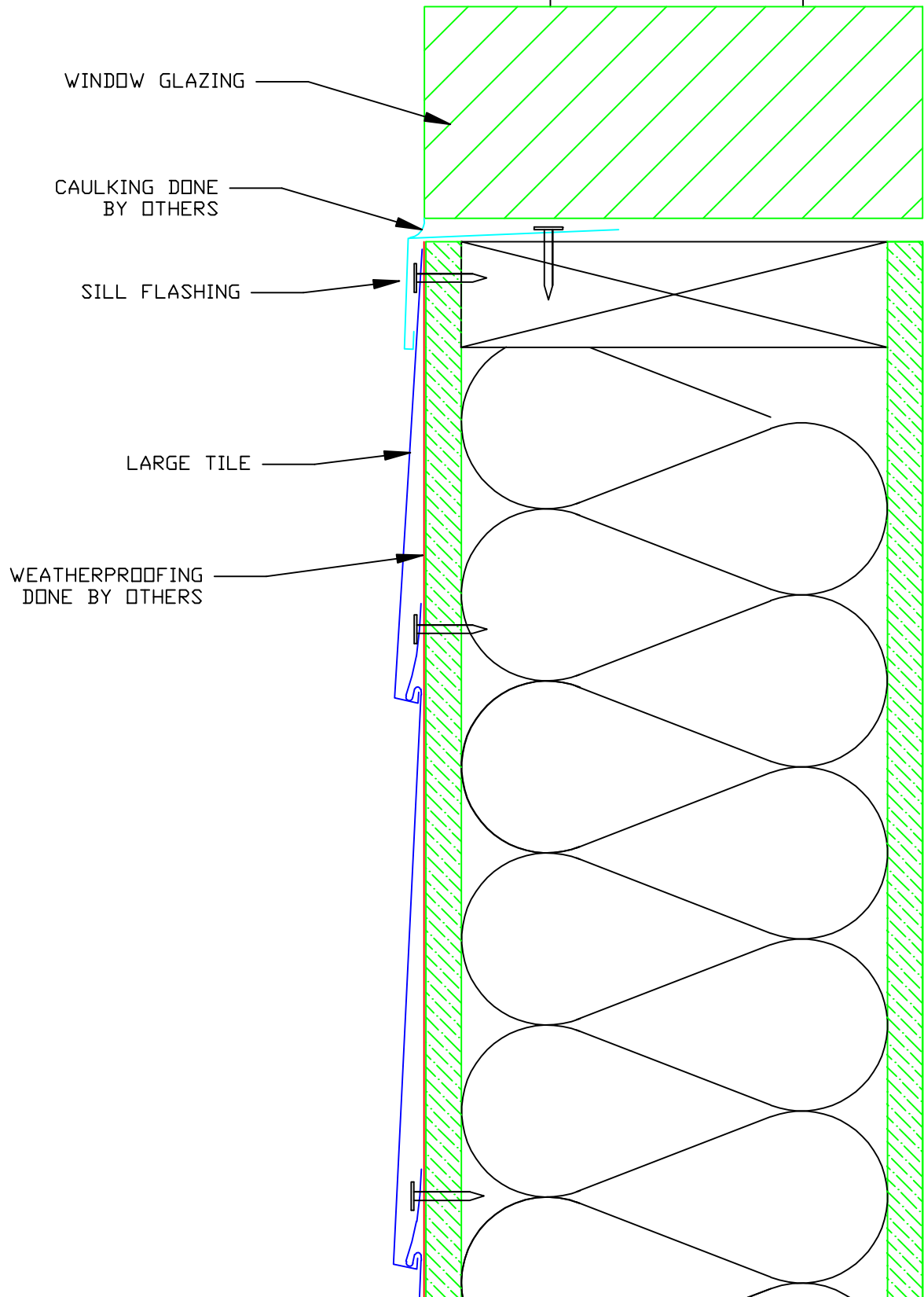
*The physics of Light Interference Color (LIC) prevent colored stainless steel from being 100% uniform

*STAINLESS COLORS
NATURAL, PEWTER, WHEAT, BRONZE, BLUE, SLATE, BRONZE-GOLD, BURGUNDY, PURPLE-BLUE, PEACOCK, BLUE-GREEN, CHARCOAL (#4/800TCHBRITE FINISH ONLY)

GA. AVAILABLE
28 GAUGE (.016")


MATERIALS
STAINLESS STEEL + ZALMAG®
SIZES AVAILABLE
8 3/8" x 14 1/2"

FINISH
STAINLESS: BRIGHT (BA), MILL (2B) ZALMAG: NATURAL, PRE-PATINA II, KUANI GREEN, BARNA BRONZE

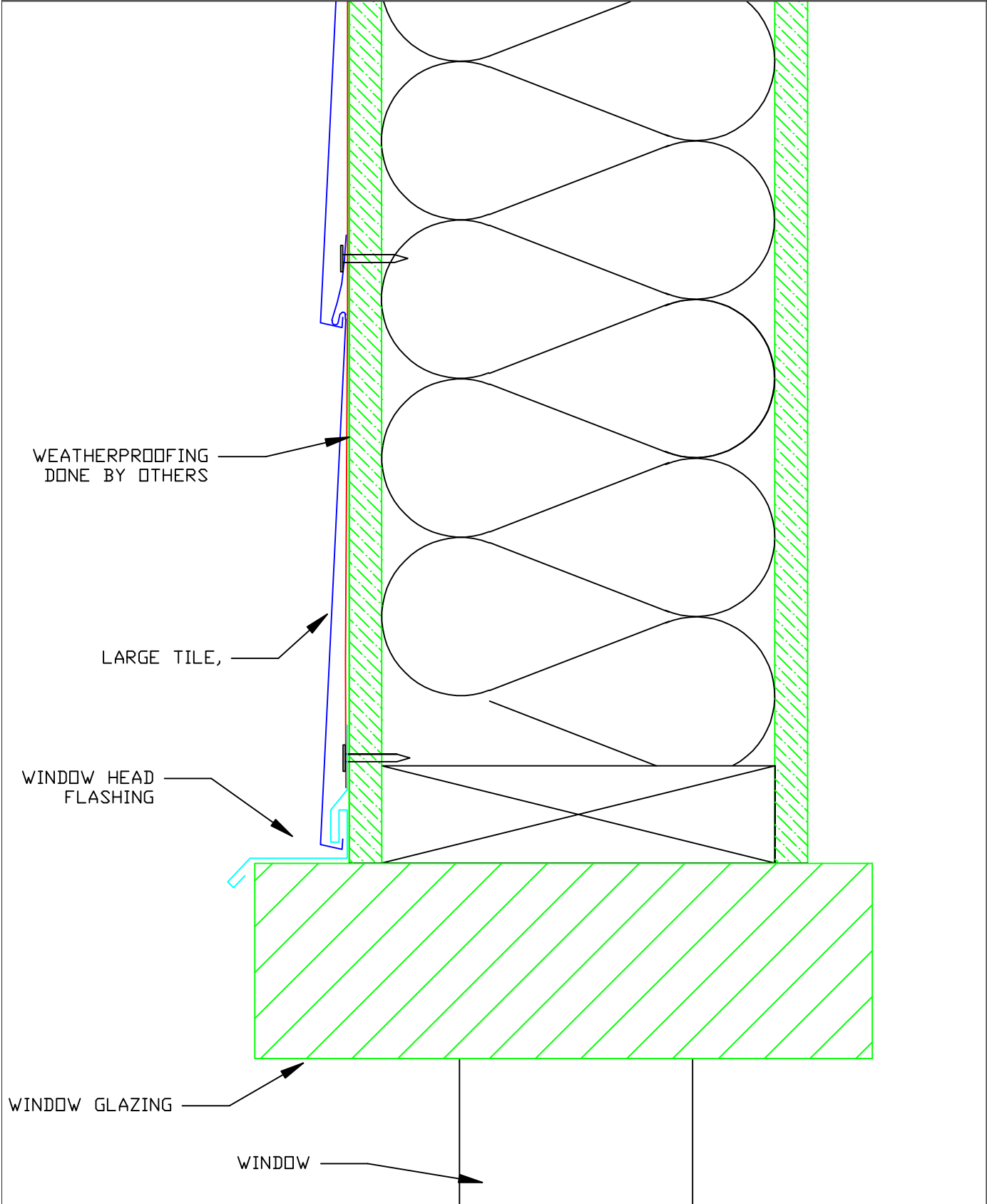


Large Flat Tile

Large Flat Tile - Window Sill


 <p>Millennium tiles</p> <p><small>*The physics of Light Interference Color (LIC) prevent colored stainless steel from being 100% uniform</small></p>	<p>*STAINLESS COLORS</p> <p>NATURAL, PEWTER, WHEAT, BRONZE, BLUE, SLATE, BRONZE-GOLD, BURGUNDY, PURPLE-BLUE, PEACOCK, BLUE-GREEN, CHARCOAL (94/SCOTCHBRITE FINISH ONLY)</p>	<p>GA. AVAILABLE</p> <p>28 GAUGE (.016")</p>	<p>MATERIALS</p> <p>STAINLESS STEEL + ZALMAG®</p>	<p>FINISH</p> <p>STAINLESS: BRIGHT (BA), MILL (2B)</p> <p>ZALMAG: NATURAL, PRE-PATINA II, KUANI GREEN, BARNA BRONZE</p>
			<p>SIZES AVAILABLE</p> <p>8 3/8" x 14 1/2"</p>	

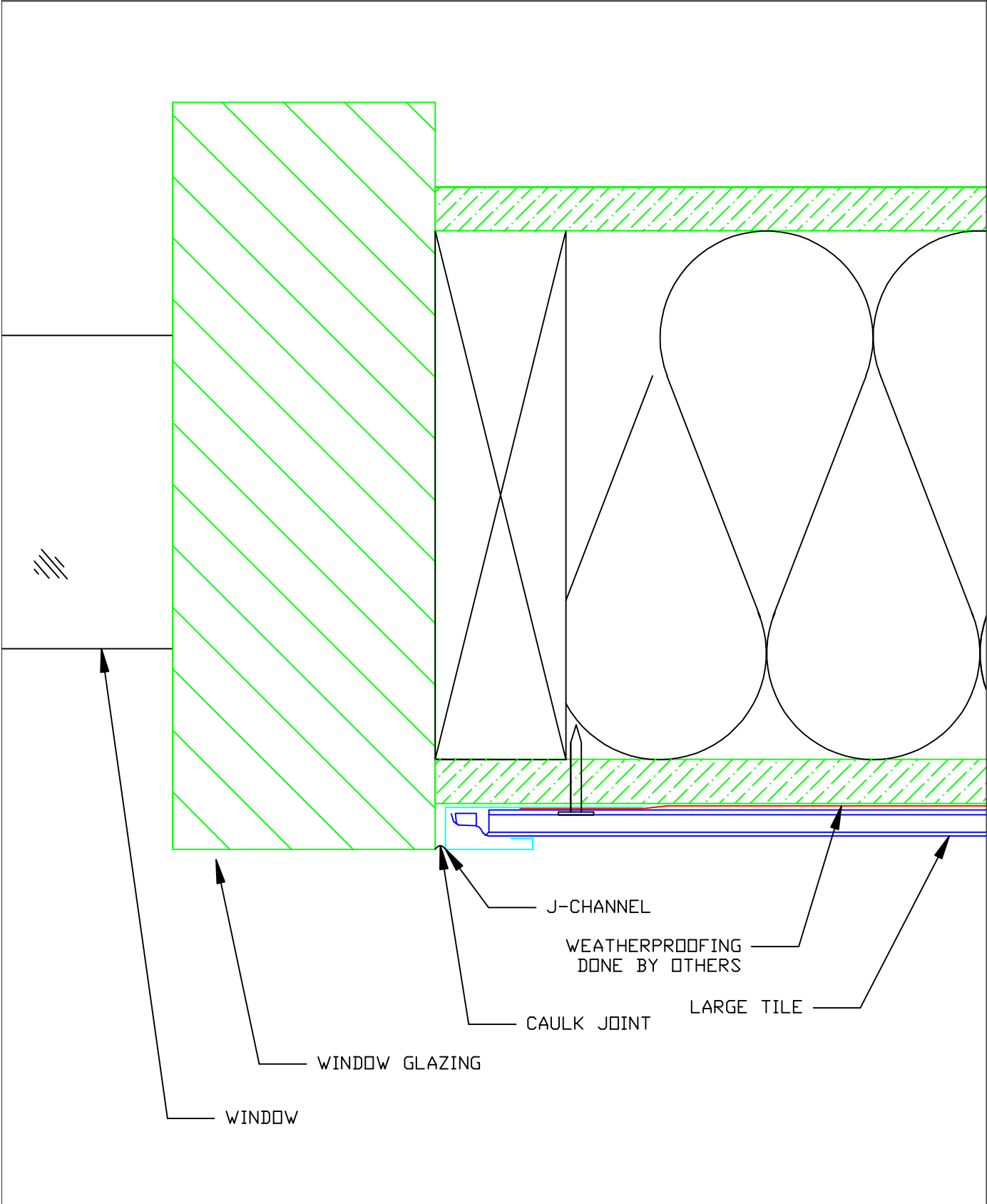
DETAIL
2A



Large Flat Tile


Large Flat Tile - Window Head

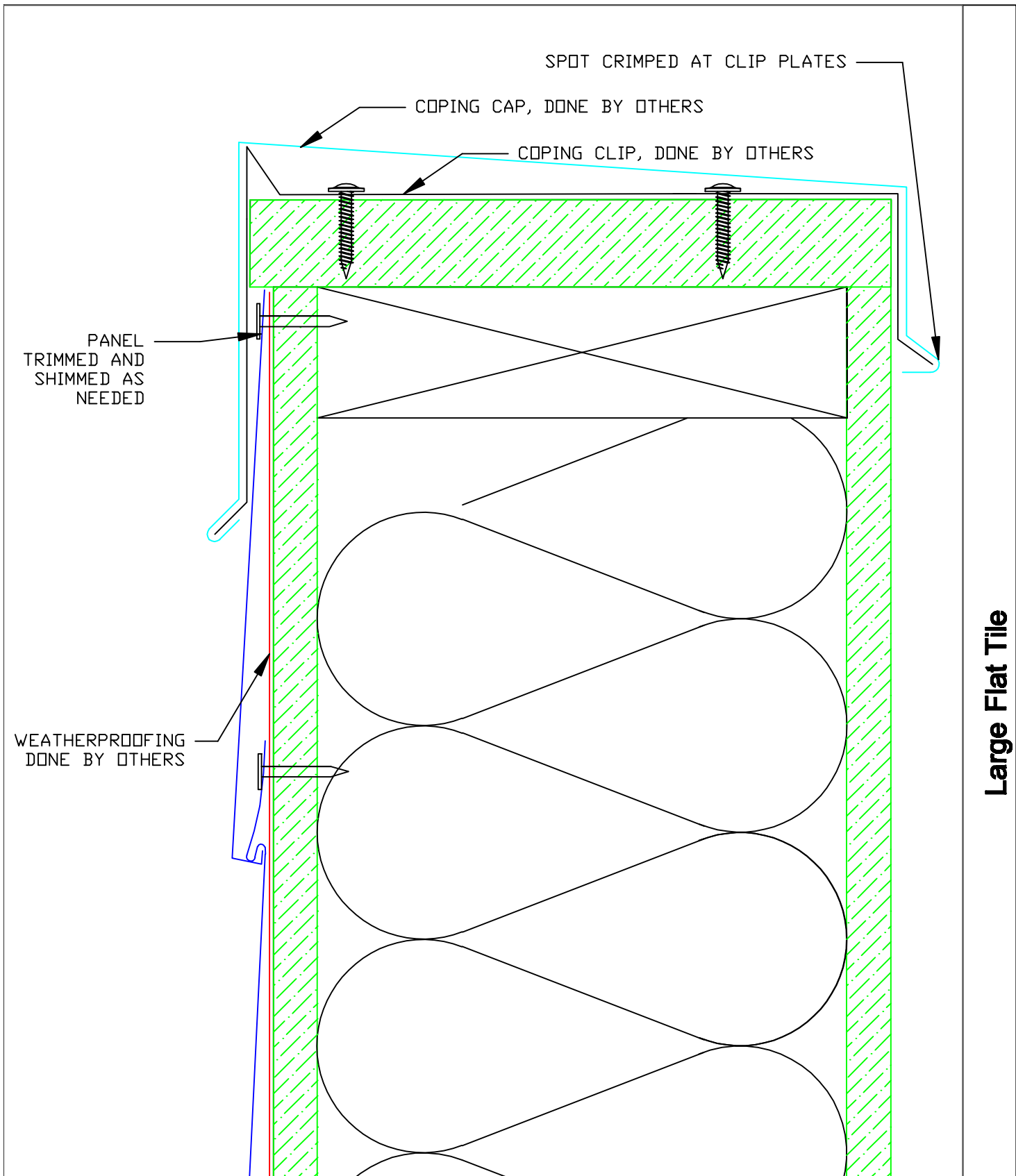
 <small>*The physics of Light Interference Color (LIC) prevent colored stainless steel from being 100% uniform</small>	*STAINLESS COLORS NATURAL, PEWTER, WHEAT, BRONZE, BLUE, SLATE, BRONZE-GOLD, BURGUNDY, PURPLE-BLUE, PEACOCK, BLUE-GREEN, CHARCOAL (#4/800TCHBRITE FINISH ONLY)	GA. AVAILABLE 28 GAUGE (.016")	MATERIALS STAINLESS STEEL + ZALMAG®	FINISH STAINLESS: BRIGHT (BA), MILL (2B) ZALMAG: NATURAL, PRE-PATINA II, KUANI GREEN, BARNA BRONZE
			SIZES AVAILABLE	
			8 3/8" x 14 1/2"	



Large Flat Tile


Large Flat Tile - Window Jam

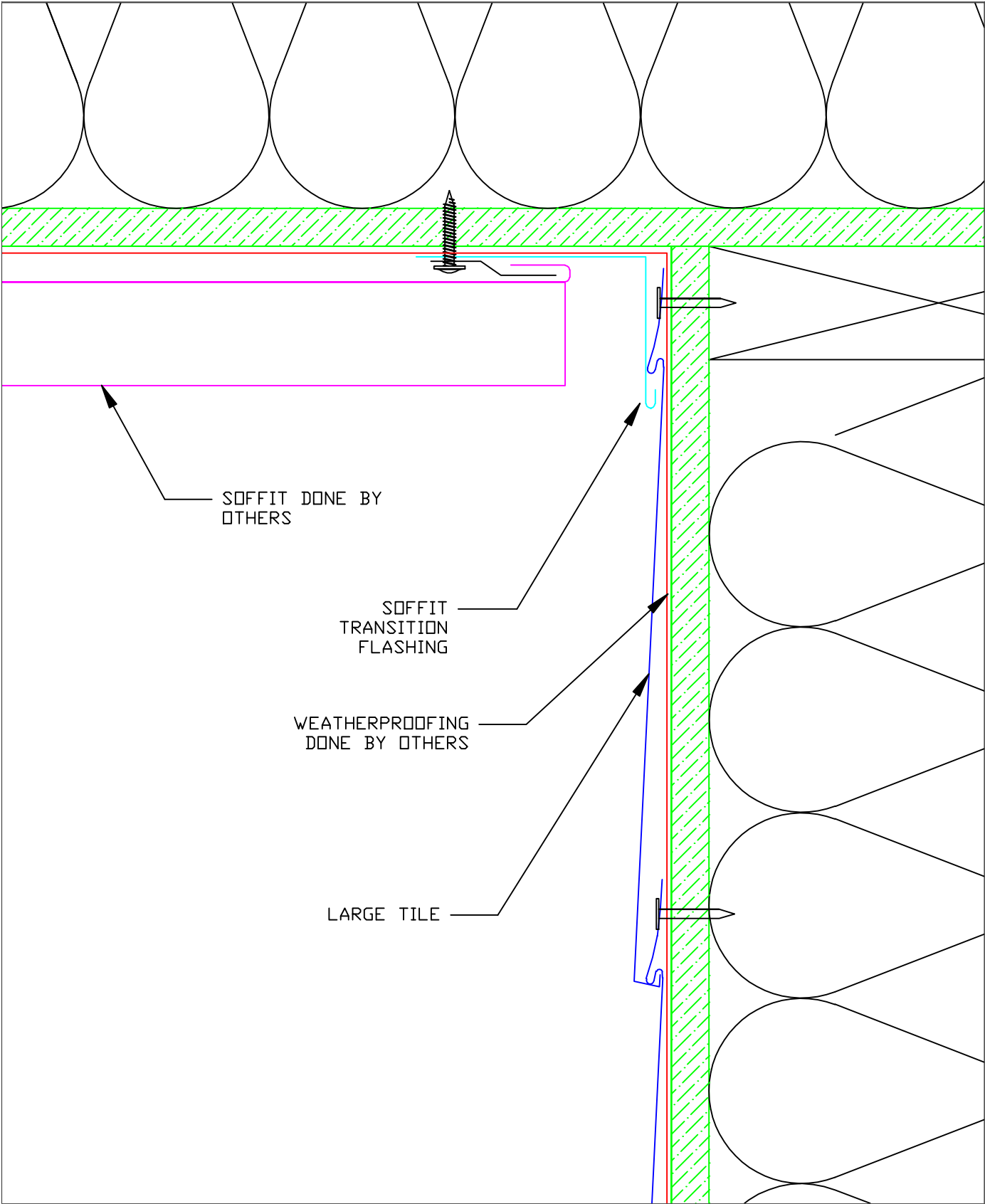
 <small>*The physics of Light Interference Color (LIC) prevent colored stainless steel from being 100% uniform</small>	*STAINLESS COLORS NATURAL, FEWTER, WHEAT, BRONZE, BLUE, SLATE, BRONZE-GOLD, BURGUNDY, PURPLE-BLUE, PEACOCK, BLUE-GREEN, CHARCOAL (#4/SCOTCHBRITE FINISH ONLY)	GA. AVAILABLE 28 GAUGE (.016")	MATERIALS STAINLESS STEEL + ZALMAG®	FINISH STAINLESS: BRIGHT (#4), MILL (#8) ZALMAG: NATURAL, PRE-PATINA II, KUANI GREEN, BARNA BRONZE
			SIZES AVAILABLE	
			8 3/8" x 14 1/2"	



Large Flat Tile

Large Flat Tile - Coping

 <p><small>*The physics of Light Interference Color (LIC) prevent colored stainless steel from being 100% uniform</small></p>	*STAINLESS COLORS NATURAL, PEWTER, WHEAT, BRONZE, BLUE, SLATE, BRONZE-GOLD, BURGUNDY, PURPLE-BLUE, PEACOCK, BLUE-GREEN, CHARCOAL (#4/800TCHBRITE FINISH ONLY)	GA. AVAILABLE 28 GAUGE (.016")	MATERIALS STAINLESS STEEL + ZALMAG®	FINISH STAINLESS: BRIGHT (#A), MILL (#B) ZALMAG: NATURAL, PRE-PATINA II, KUANI GREEN, BARNA BRONZE
			SIZES AVAILABLE 6 3/8" x 14 1/2"	



Large Flat Tile

Large Flat Tile - Termination at Soffit

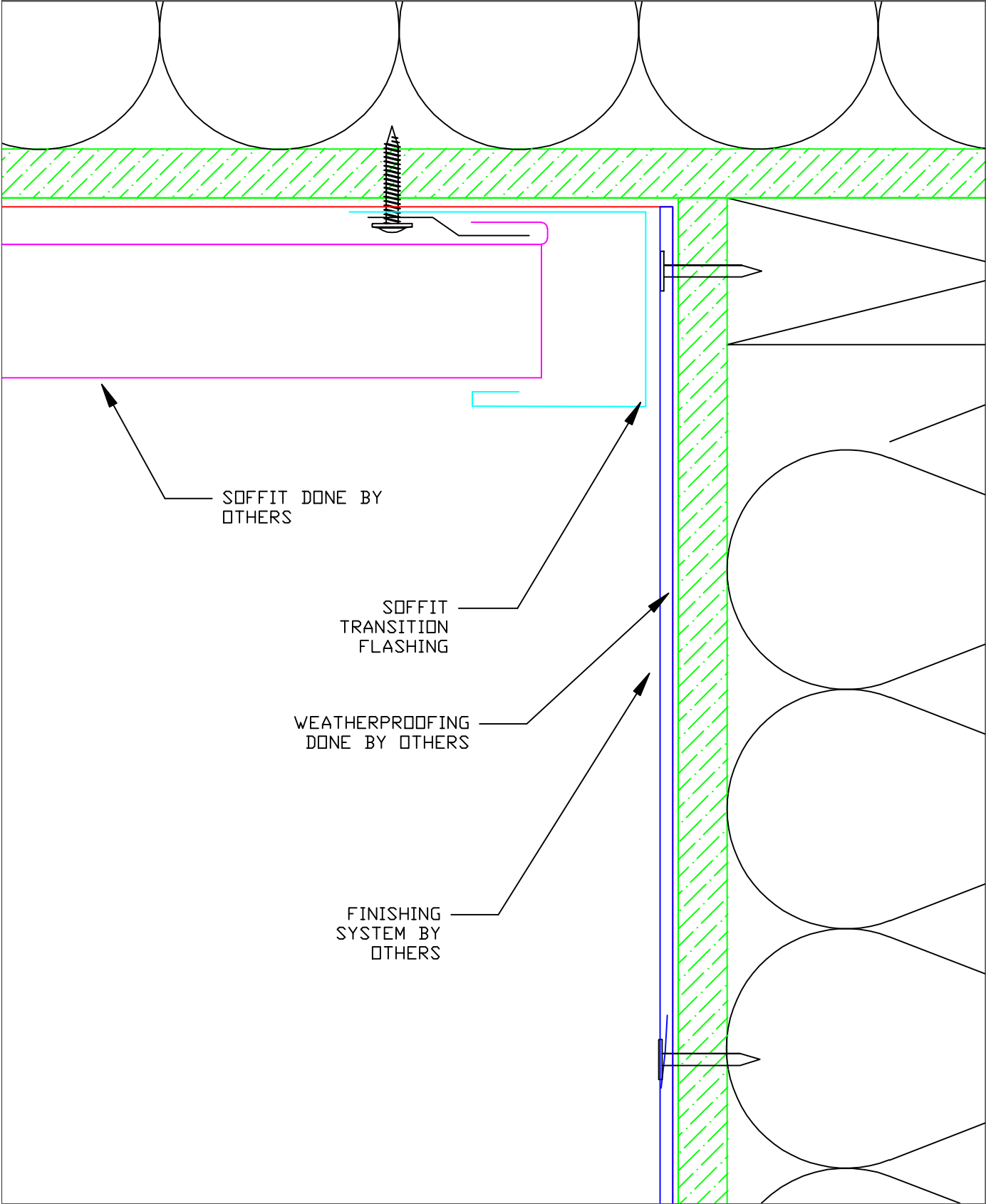
*The physics of Light Interference Color (LIC) prevent colored stainless steel from being 100% uniform

*STAINLESS COLORS
NATURAL, FEWTER, WHEAT, BRONZE, BLUE, SLATE, BRONZE-GOLD, BURGUNDY, PURPLE-BLUE, PEACOCK, BLUE-GREEN, CHARCOAL (94/SCOTCHBRITE FINISH ONLY)

GA. AVAILABLE
28 GAUGE (.016")


MATERIALS
STAINLESS STEEL + ZALMAG®
SIZES AVAILABLE
8 3/8" x 14 1/2"

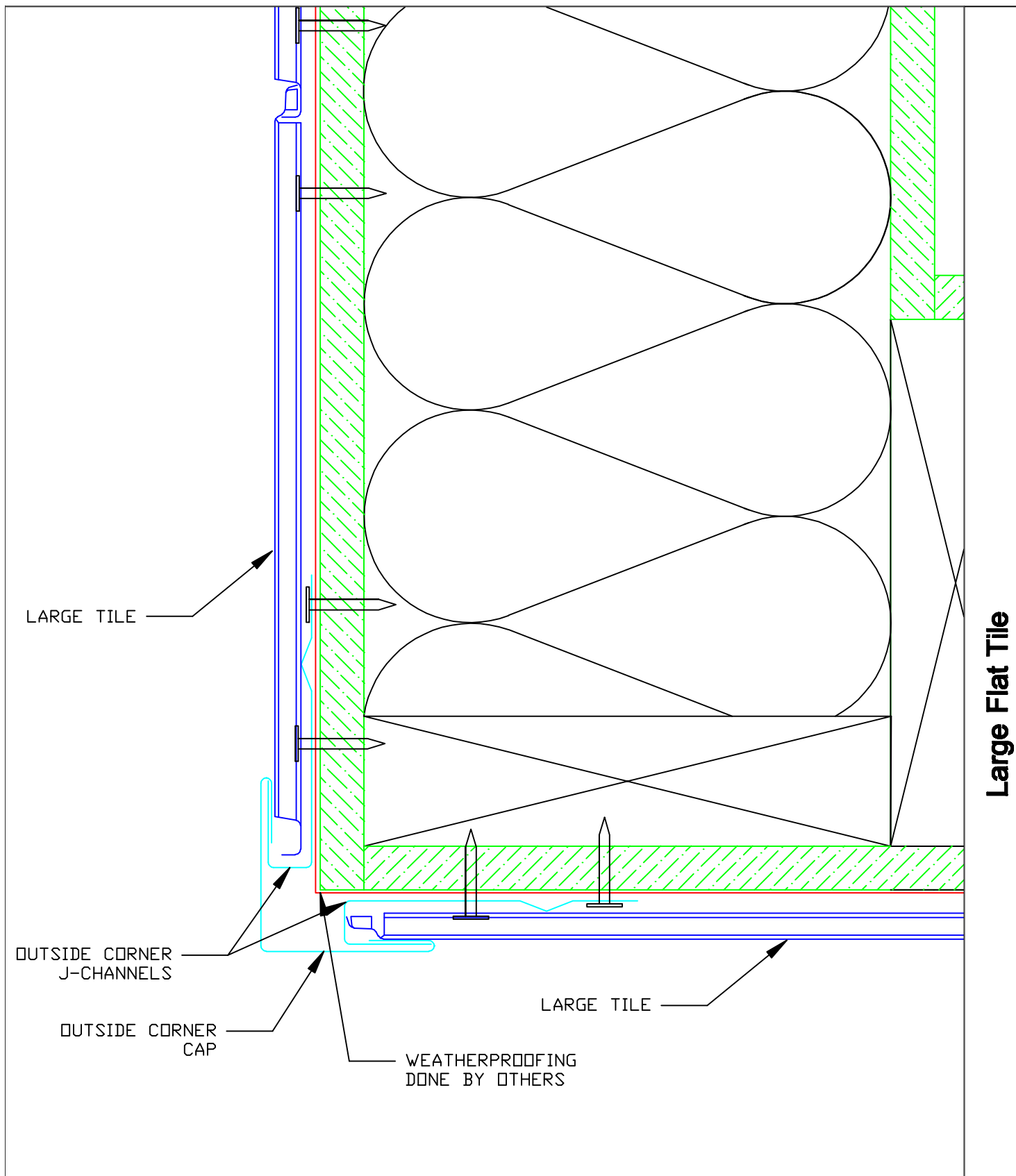
FINISH
STAINLESS: BRIGHT (BA), MILL (2B)
ZALMAG: NATURAL, PRE-PATINA II, KUANI GREEN, BARNA BRONZE



Large Flat Tile


Large Flat Tile - Termination at Soffit

 <small>*The physics of Light Interference Color (LIC) prevent colored stainless steel from being 100% uniform</small>	*STAINLESS COLORS NATURAL, FEWTER, WHEAT, BRONZE, BLUE, SLATE, BRONZE-GOLD, BURGUNDY, PURPLE-BLUE, PEACOCK, BLUE-GREEN, CHARCOAL (94/SCOTCHBRITE FINISH ONLY)	GA. AVAILABLE 28 GAUGE (.016")	MATERIALS STAINLESS STEEL + ZALMAG®	FINISH STAINLESS: BRIGHT (BA), MILL (2B) ZALMAG: NATURAL, PRE-PATINA II, KUANI GREEN, BARNA BRONZE
			SIZES AVAILABLE	
			8 3/8" x 14 1/2"	

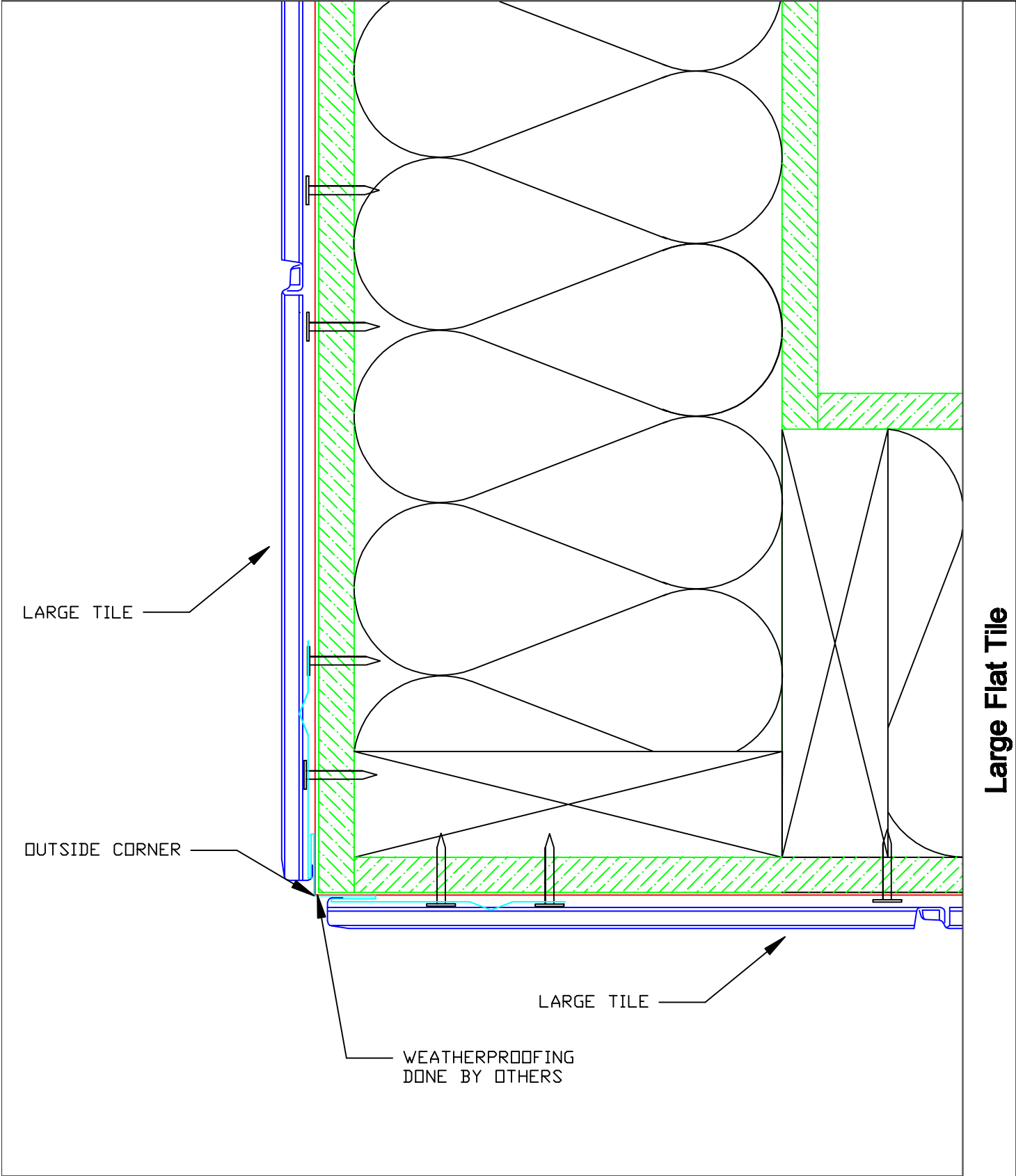


Large Flat Tile


Large Flat Tile - Outside Corner (3-Piece)

 <p><small>*The physics of Light Interference Color (LIC) prevent colored stainless steel from being 100% uniform</small></p>	*STAINLESS COLORS NATURAL, PEWTER, WHEAT, BRONZE, BLUE, SLATE, BRONZE-GOLD, BURGUNDY, PURPLE-BLUE, PEACOCK, BLUE-GREEN, CHARCOAL (94/SCOTCHBRITE FINISH ONLY)	GA. AVAILABLE 28 GAUGE (.016")	MATERIALS STAINLESS STEEL + ZALMAG®	FINISH STAINLESS: BRIGHT (BA), MILL (2B) ZALMAG: NATURAL, PRE-PATINA II, KUANI GREEN, BARNA BRONZE
			SIZES AVAILABLE 8 3/8" x 14 1/2"	

DETAIL
7A



Large Flat Tile - Outside Corner (1-Piece)



Millennium
tiles

*The physics of Light Interference Color (LIC) prevent colored stainless steel from being 100% uniform

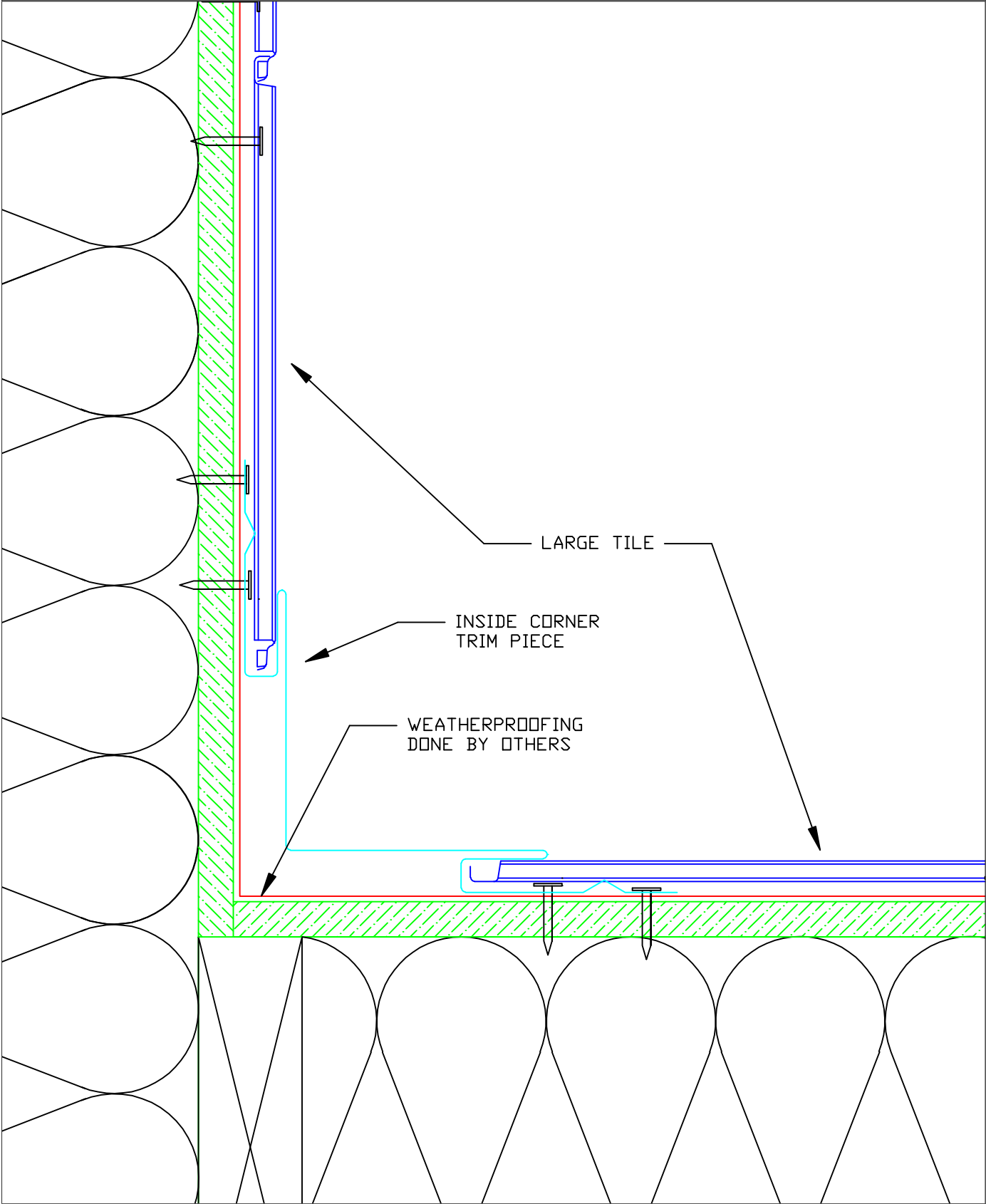
*STAINLESS COLORS
NATURAL, FEWTER, WHEAT, BRONZE, BLUE, SLATE, BRONZE-GOLD, BURGUNDY, PURPLE-BLUE, PEACOCK, BLUE-GREEN, CHARCOAL (94/SCOTCHBRITE FINISH ONLY)

GA. AVAILABLE
28 GAUGE (.016")

MATERIALS
STAINLESS STEEL + ZALMAG®
SIZES AVAILABLE
8 3/8" x 14 1/2"


FINISH
STAINLESS: BRIGHT (BA), MILL (2B)
ZALMAG: NATURAL, PRE-PATINA II, KUANI GREEN, BARNA BRONZE

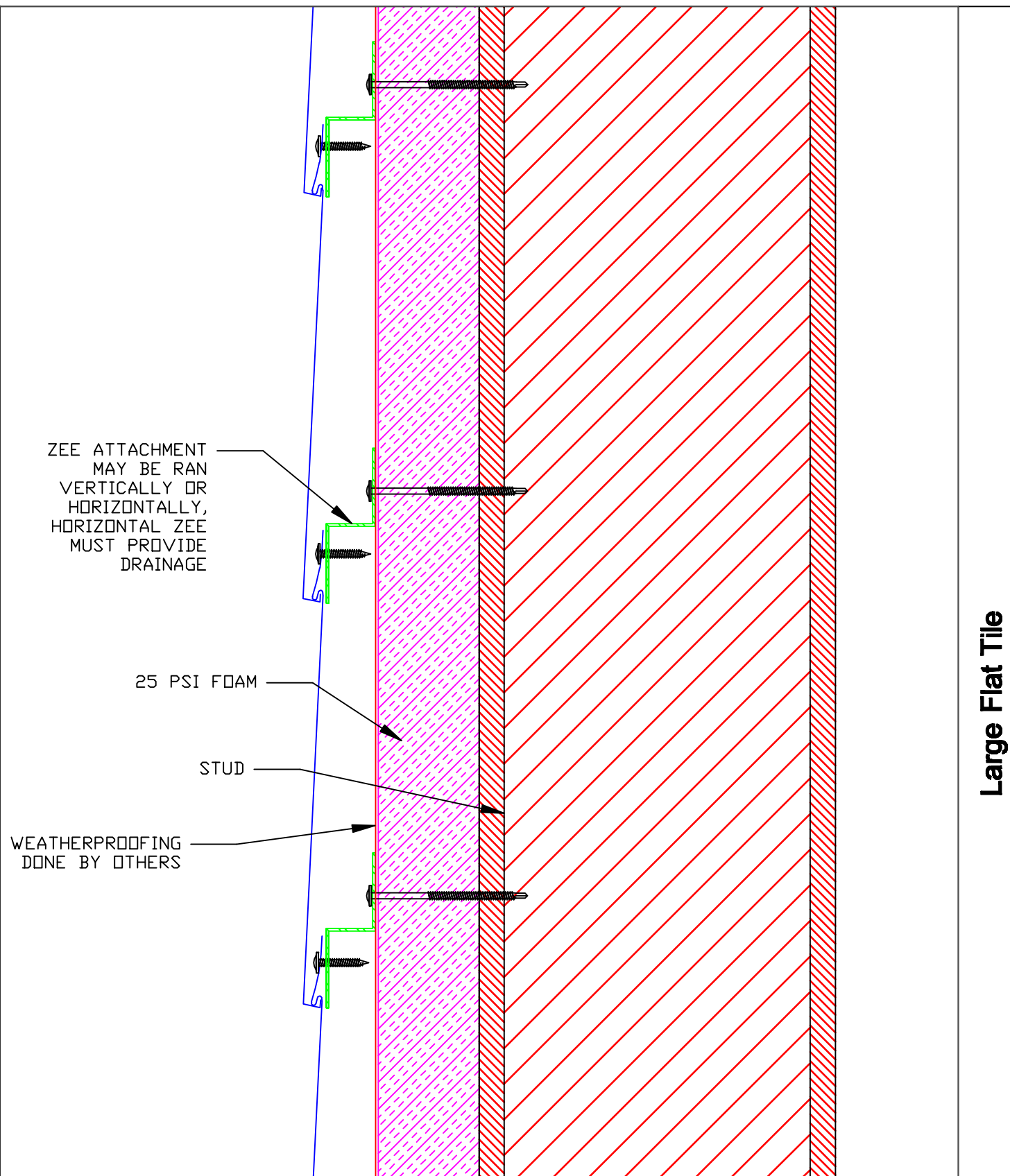
DETAIL
7B



Large Flat Tile


Large Flat Tile - Inside Corner

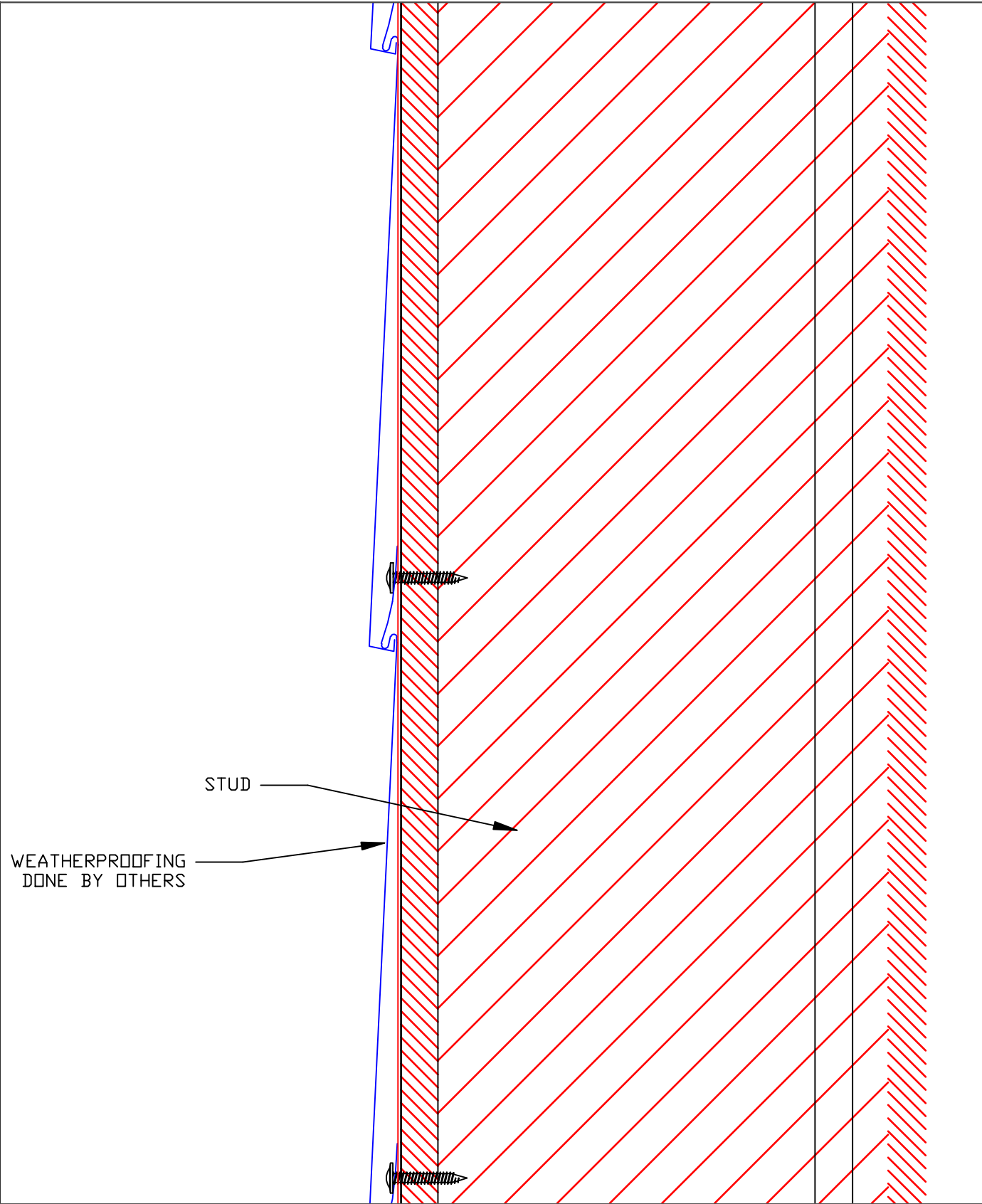
<div><p>Millennium tiles</p><p><small>*The physics of Light Interference Color (LIC) prevent colored stainless steel from being 100% uniform</small></p></div>	<div><p>*STAINLESS COLORS</p><p>NATURAL, PEWTER, WHEAT, BRONZE, BLUE, SLATE, BRONZE-GOLD, BURGUNDY, PURPLE-BLUE, PEACOCK, BLUE-GREEN, CHARCOAL (#4/SCOTCHBRITE FINISH ONLY)</p></div>	<div><p>GA. AVAILABLE</p><p>28 GAUGE (.016")</p></div>	<div><p>MATERIALS</p><p>STAINLESS STEEL + ZALMAG®</p></div>	<div><p>FINISH</p><p>STAINLESS: BRIGHT (#A), MILL (#B)</p><p>ZALMAG: NATURAL, PRE-PATINA II, KUANI GREEN, BARNA BRONZE</p></div>
			<div><p>SIZES AVAILABLE</p><p>8 3/8" x 14 1/2"</p></div>	



Large Flat Tile


Large Flat Tile - Wall Assembly Over Exterior Insulation

 <p>Millennium tiles</p> <p><small>*The physics of Light Interference Color (LIC) prevent colored stainless steel from being 100% uniform</small></p>	<p>*STAINLESS COLORS</p> <p>NATURAL, PEWTER, WHEAT, BRONZE, BLUE, SLATE, BRONZE-GOLD, BURGUNDY, PURPLE-BLUE, PEACOCK, BLUE-GREEN, CHARCOAL (94/SCOTCHBRITE FINISH ONLY)</p>	<p>GA. AVAILABLE</p> <p>28 GAUGE (.016")</p>	<p>MATERIALS</p> <p>STAINLESS STEEL + ZALMAG®</p>	<p>FINISH</p> <p>STAINLESS: BRIGHT (BA), MILL (2B)</p> <p>ZALMAG: NATURAL, PRE-PATINA II, KUANI GREEN, BARNA BRONZE</p>
			<p>SIZES AVAILABLE</p> <p>6 3/8" x 14 1/2"</p>	



Large Flat Tile

Large Flat Tile - Wall Assembly Over Plywood

 <p><small>*The physics of Light Interference Color (LIC) prevent colored stainless steel from being 100% uniform</small></p>	*STAINLESS COLORS NATURAL, PEWTER, WHEAT, BRONZE, BLUE, SLATE, BRONZE-GOLD, BURGUNDY, PURPLE-BLUE, PEACOCK, BLUE-GREEN, CHARCOAL (94/SCOTCHBRITE FINISH ONLY)	GA. AVAILABLE 28 GAUGE (.016")	MATERIALS STAINLESS STEEL + ZALMAG®	FINISH STAINLESS: BRIGHT (BA), MILL (2B) ZALMAG: NATURAL, PRE-PATINA II, KUANI GREEN, BARNA BRONZE
			SIZES AVAILABLE 6 3/8" x 14 1/2"	

DETAIL
9B