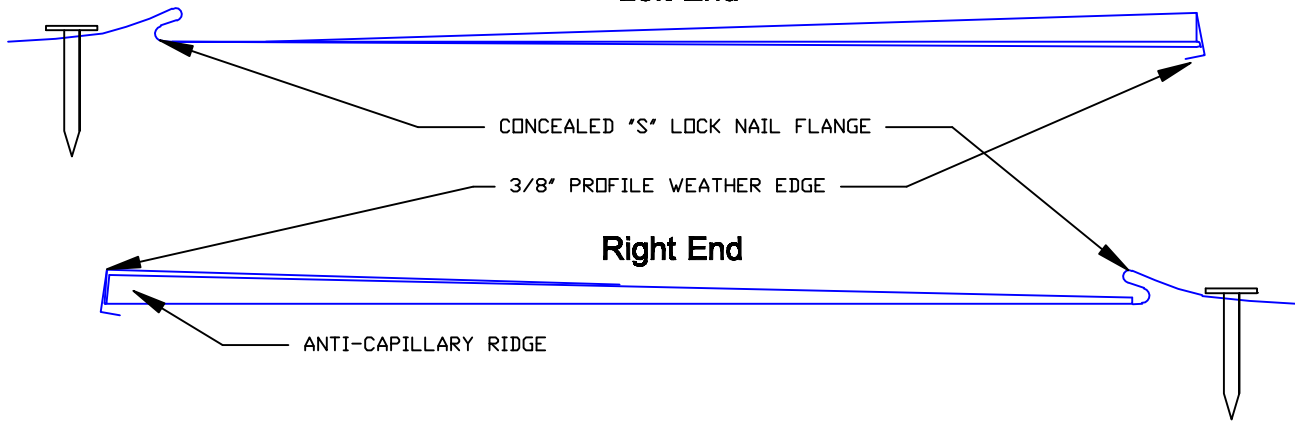
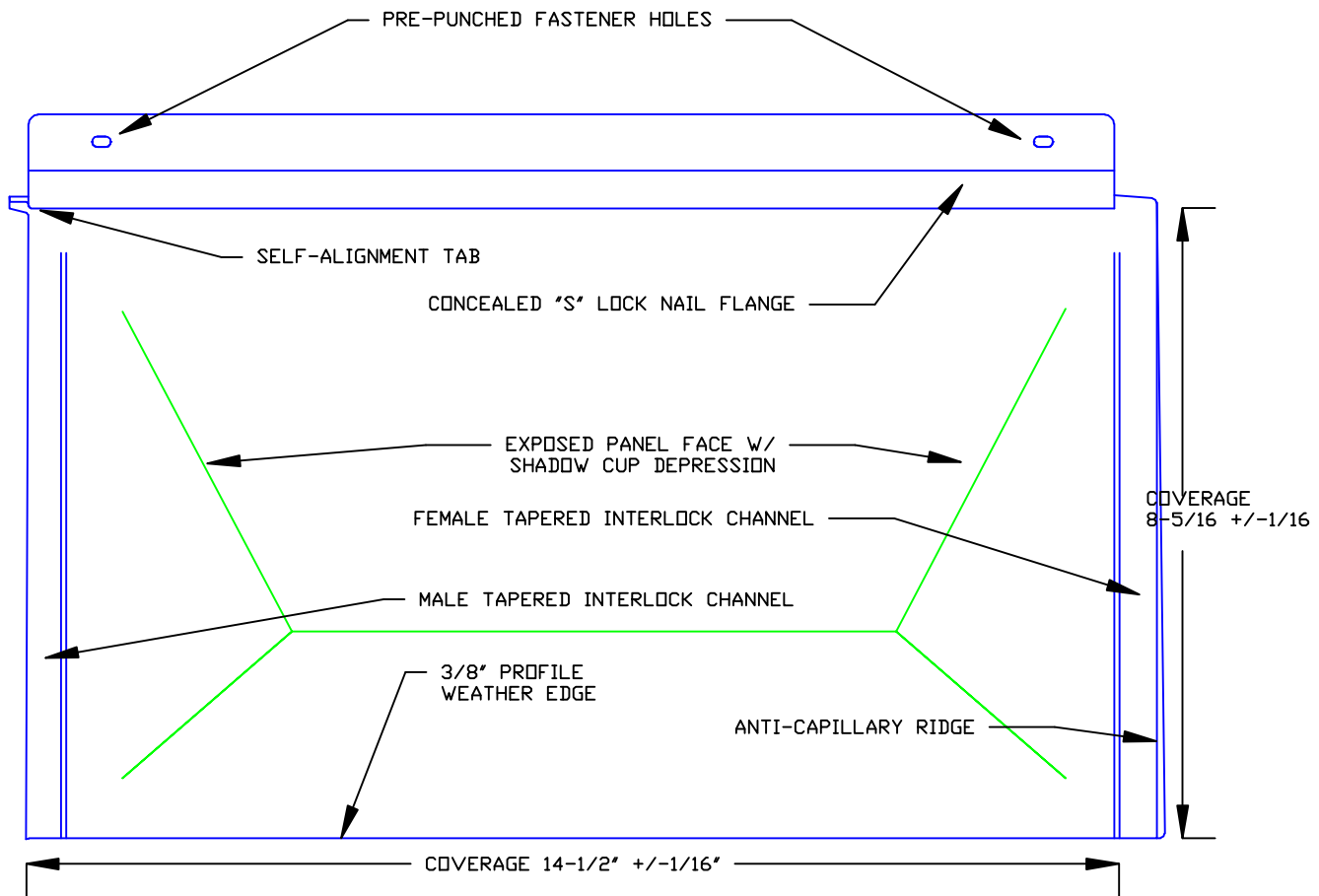


Left End




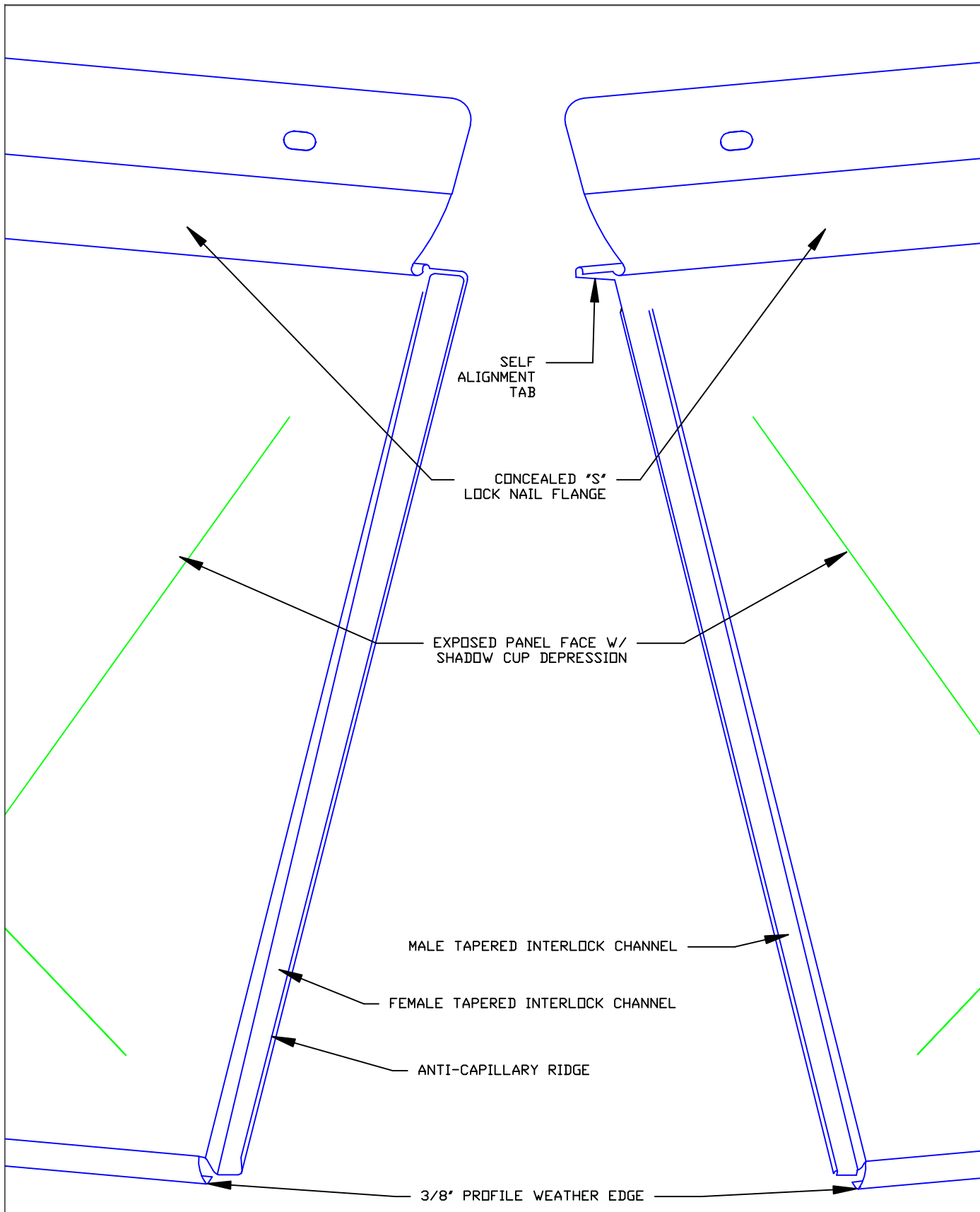
Right End

ANTI-CAPILLARY RIDGE



Large Shadow Cup - Profile Details

 MILLENNIUM <small>FORMS</small> <small>*The physics of Light Interference Color (LIC) prevent colored stainless steel from being 100% uniform</small>	*STAINLESS COLORS	GA. AVAILABLE	MATERIALS	FINISH
	NATURAL, PEWTER, WHEAT, BRONZE, BLUE, SLATE, BRONZE-GOLD, BURGUNDY, PURPLE-BLUE, PEACOCK, BLUE-GREEN, CHARCOAL (#4 SCOTCHBRITE FINISH ONLY)	28 GAUGE (.018")	STAINLESS STEEL + ZALMAG®	STAINLESS: BRIGHT (BA), MILL (BB) ZALMAG: NATURAL & PRE-PATINA II
			SIZES AVAILABLE	
			8 3/8" x 14 1/2"	



Large Shadow Cup Tile

Large Shadow Cup Tile - Vertical Joint Detail



MILLENNIUM
F O R M S

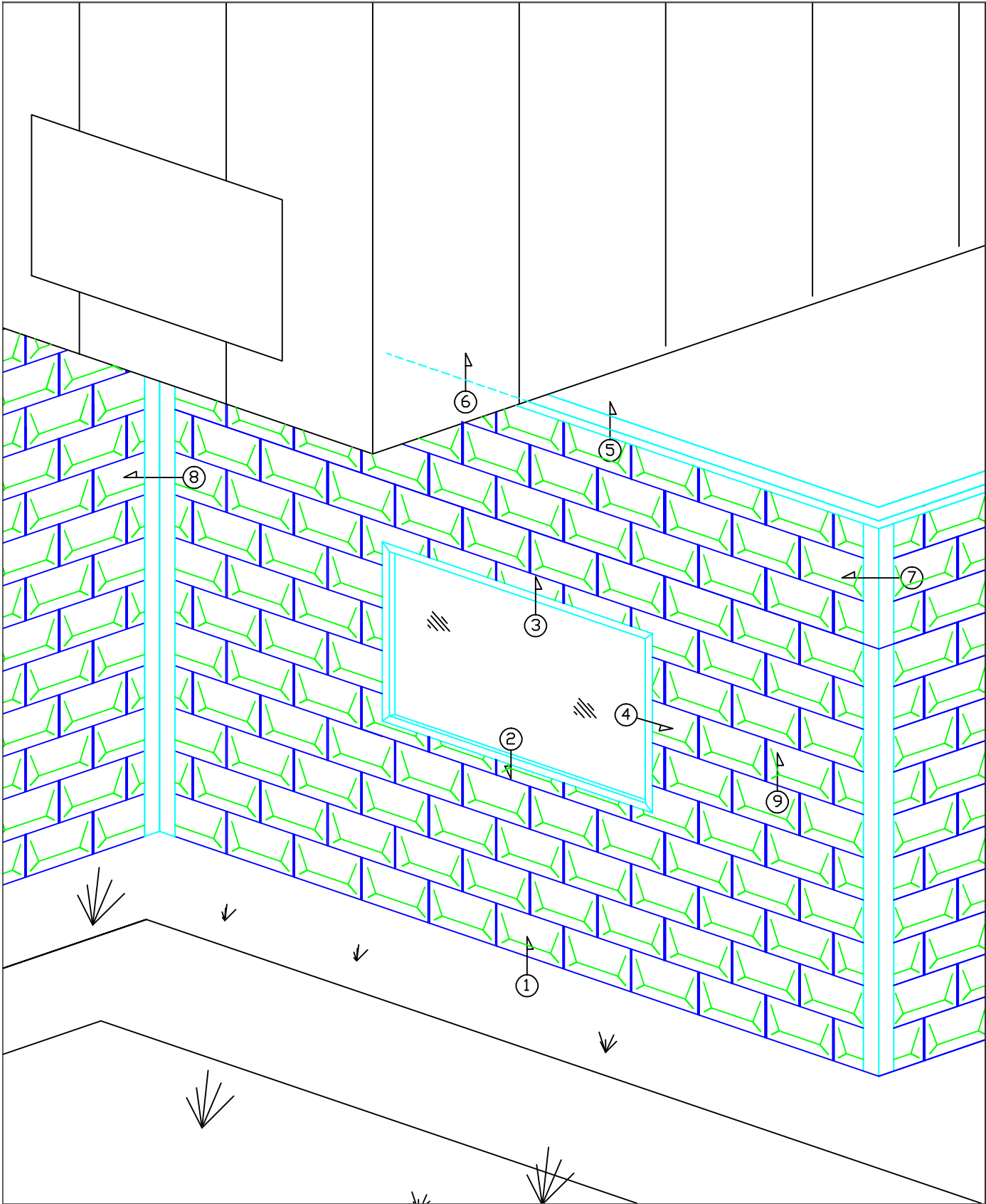
*The physics of Light Interference Color (LIC) prevent colored stainless steel from being 100% uniform

*STAINLESS COLORS
NATURAL, PEWTER, WHEAT, BRONZE, BLUE, SLATE, BRONZE-GOLD, BURGUNDY, PURPLE-BLUE, PEACOCK, BLUE-GREEN, CHARCOAL (#4 SCOTCHBRITE FINISH ONLY)

GA. AVAILABLE
28 GAUGE (.018")


MATERIALS
STAINLESS STEEL + ZALMAG®
SIZES AVAILABLE
8 3/8" x 14 1/2"

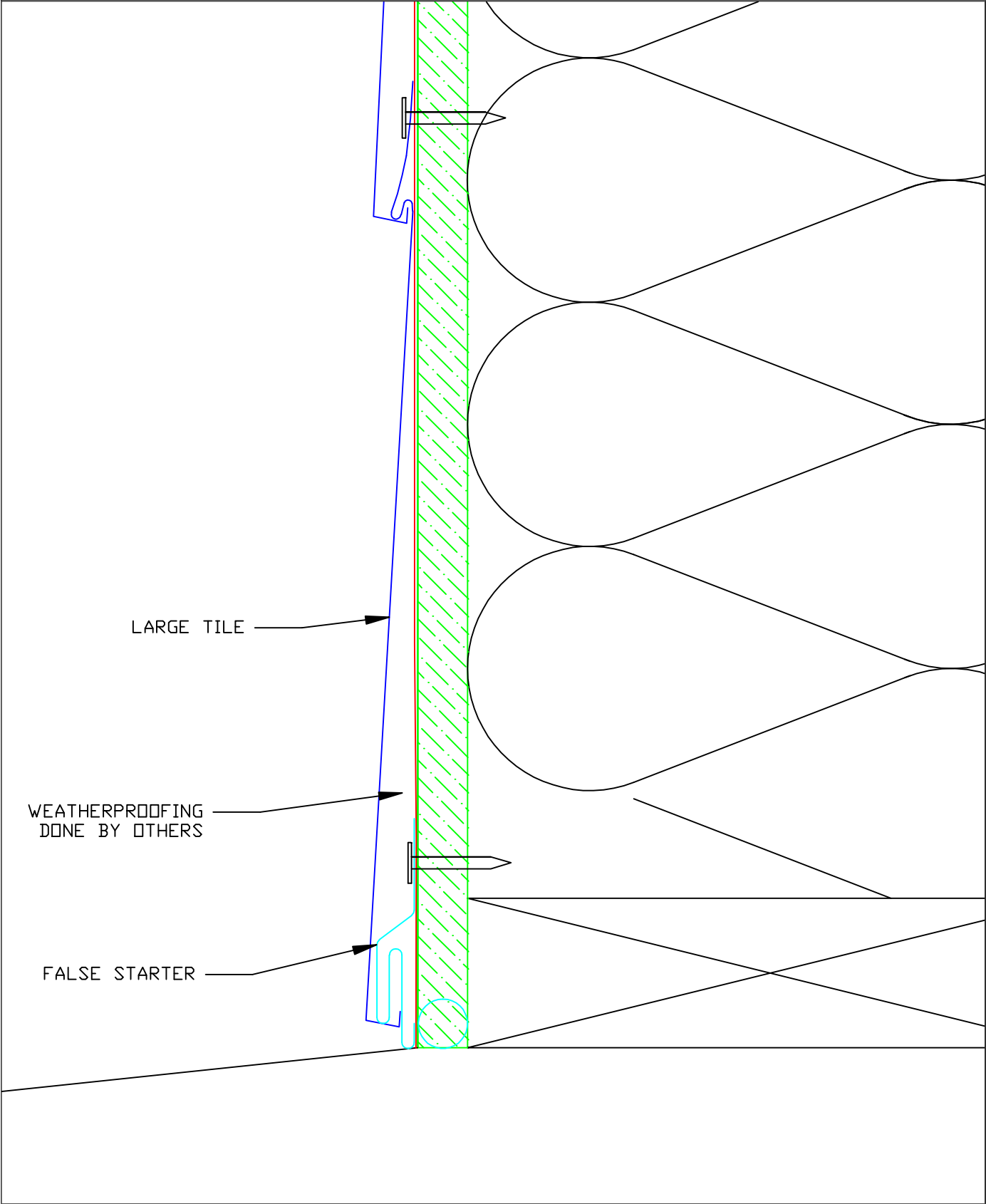
FINISH
STAINLESS: BRIGHT (BA), MILL (BB)
ZALMAG: NATURAL & PRE-PATINA II



Large Shadow Cup Tile


Large Shadow Cup Tile - Detail Wall

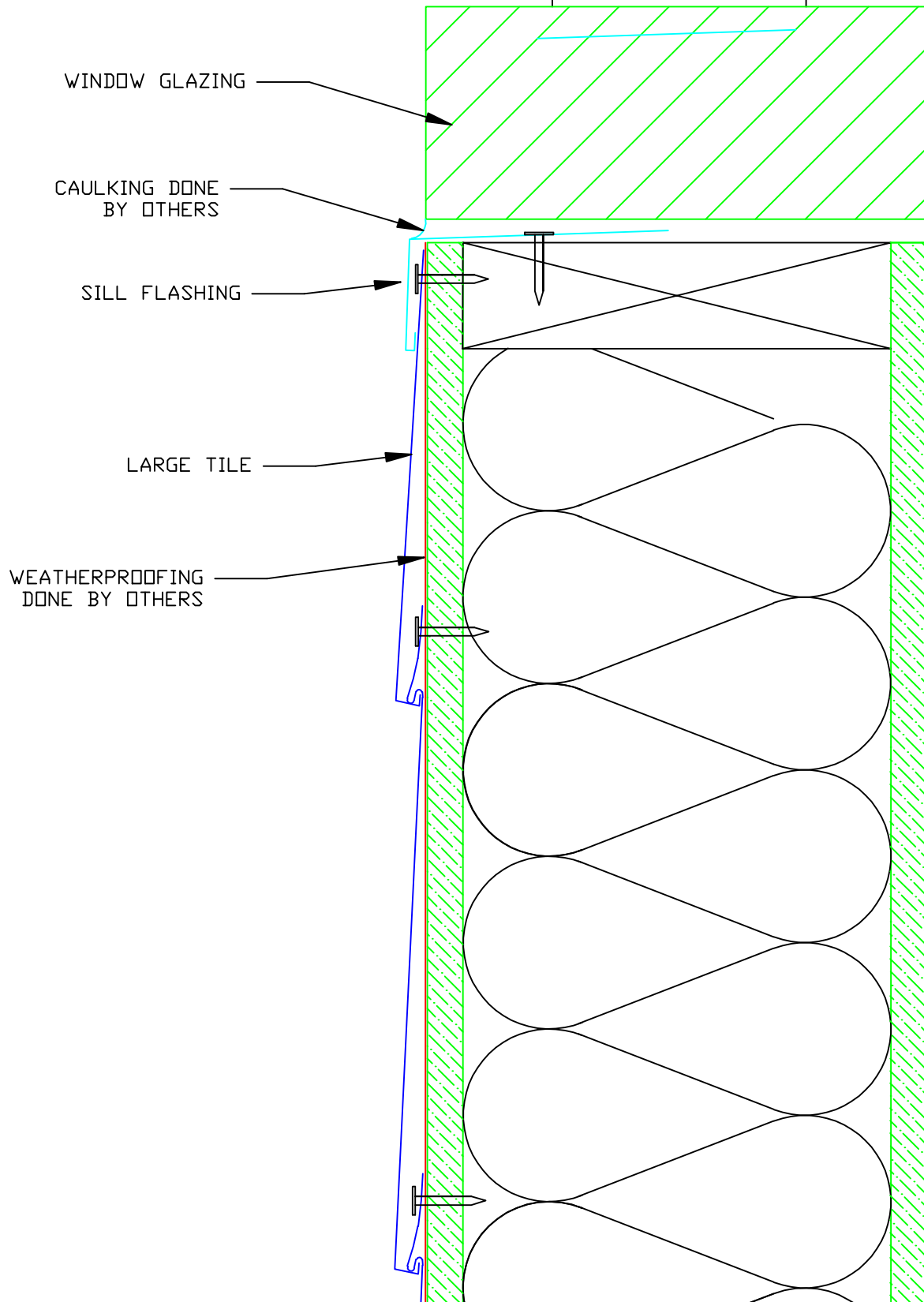
 MILLENNIUM F O R M S <small>*The physics of Light Interference Color (LIC) prevent colored stainless steel from being 100% uniform</small>	*STAINLESS COLORS NATURAL, PEWTER, WHEAT, BRONZE, BLUE, SLATE, BRONZE-GOLD, BURGUNDY, PURPLE-BLUE, PEACOCK, BLUE-GREEN, CHARCOAL (#4/800TCBRITE FINISH ONLY)	GA. AVAILABLE 28 GAUGE (.018")	MATERIALS STAINLESS STEEL + ZALMAG®	FINISH STAINLESS: BRIGHT (BA), MILL (BB) ZALMAG: NATURAL & PRE-PATINA II
			SIZES AVAILABLE	
			8 3/8" x 14 1/2"	



Large Shadow Cup Tile


Large Shadow Cup Tile - Starter / False Starter

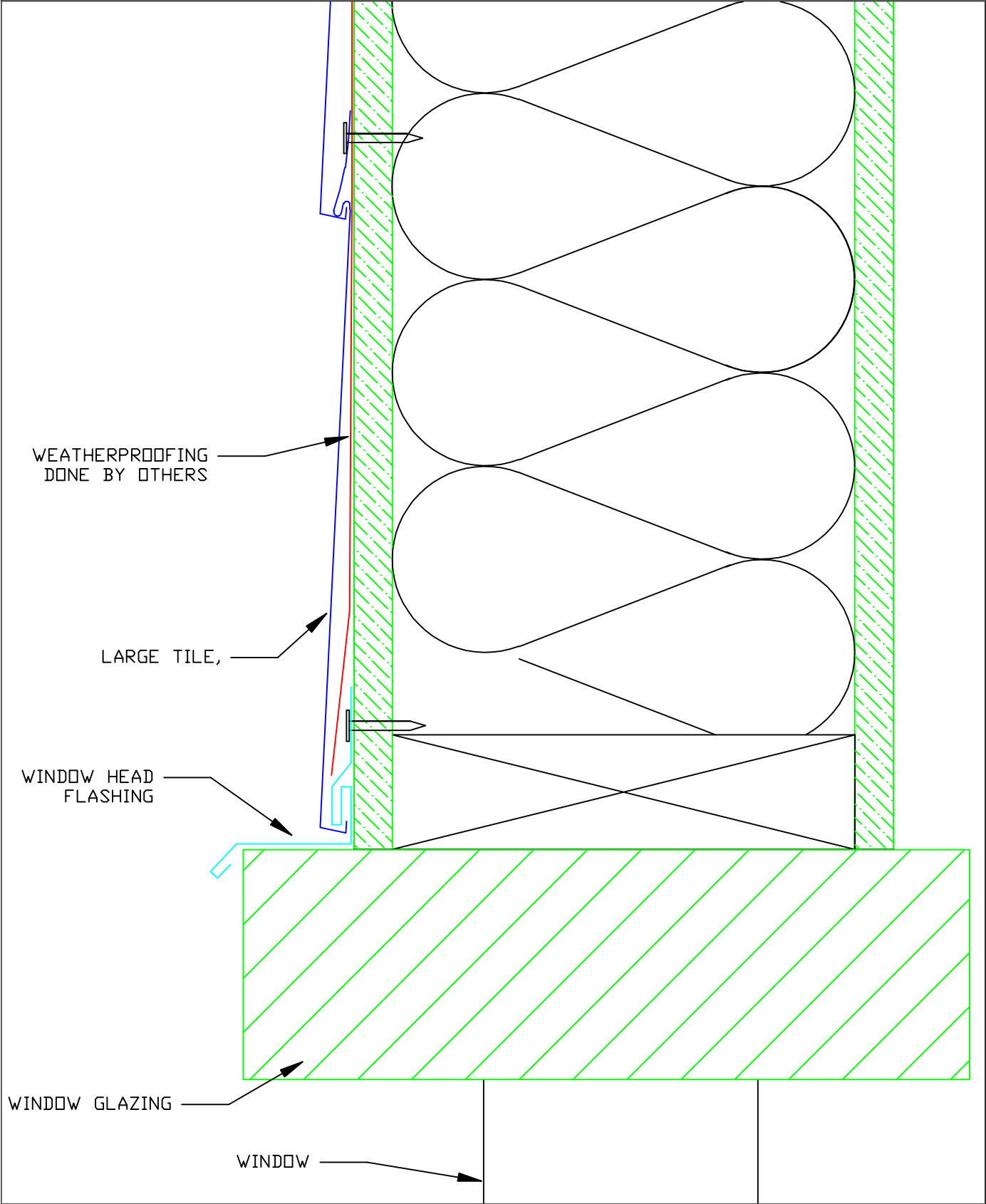
 MILLENNIUM FORMS <small>*The physics of Light Interference Color (LIC) prevent colored stainless steel from being 100% uniform</small>	*STAINLESS COLORS NATURAL, PEWTER, WHEAT, BRONZE, BLUE, SLATE, BRONZE-GOLD, BURGUNDY, PURPLE-BLUE, PEACOCK, BLUE-GREEN, CHARCOAL (#4 SCOTCHBRITE FINISH ONLY)	GA. AVAILABLE 28 GAUGE (.018")	MATERIALS STAINLESS STEEL + ZALMAG®	FINISH STAINLESS: BRIGHT (BA), MILL (BB) ZALMAG: NATURAL & PRE-PATINA II
			SIZES AVAILABLE	
			8 3/8" x 14 1/2"	



Large Shadow Cup Tile


Large Shadow Cup Tile - Window Sill

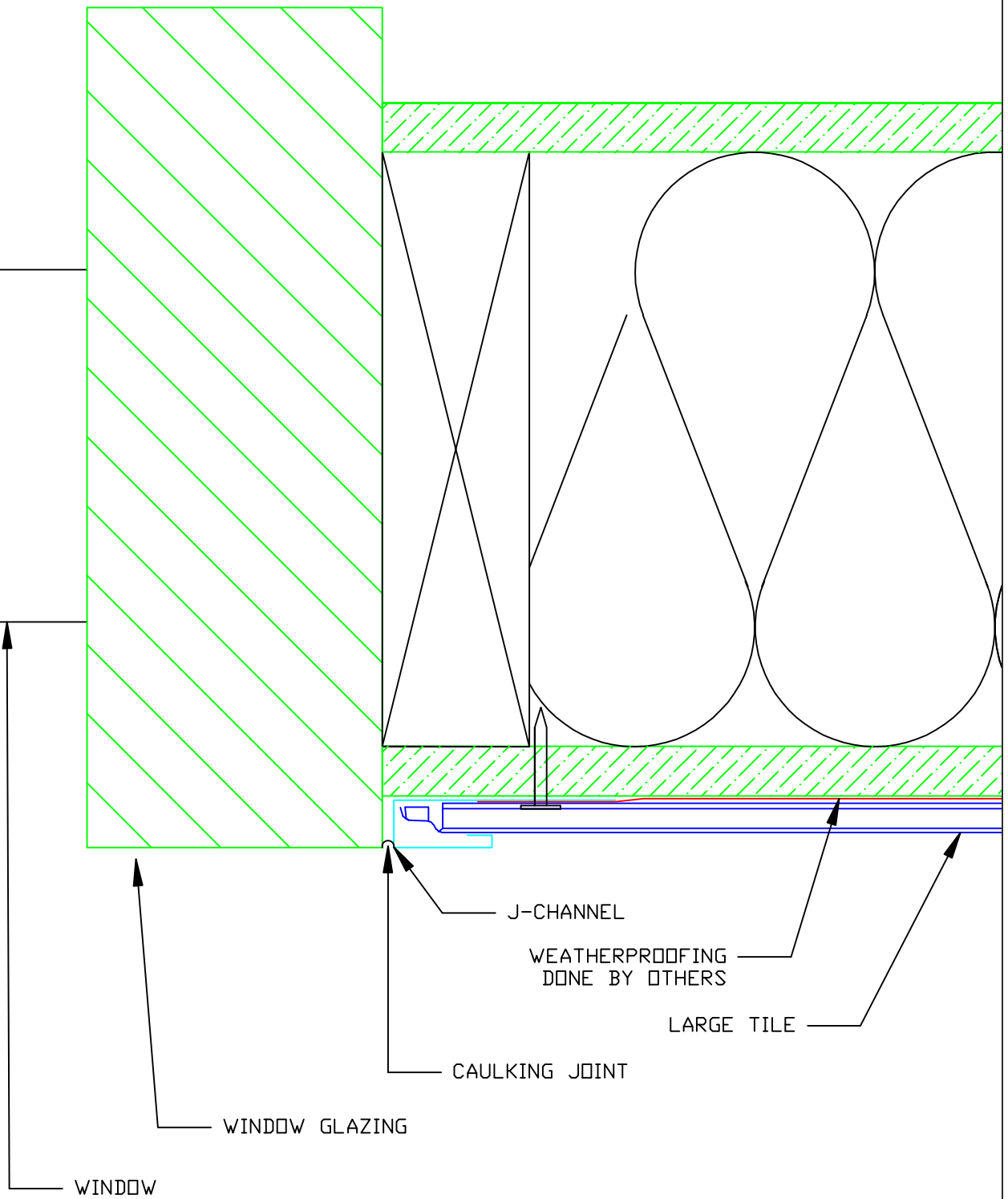
 <p>MILLENNIUM FORMS</p> <p><small>*The physics of Light Interference Color (LIC) prevent colored stainless steel from being 100% uniform</small></p>	<p>*STAINLESS COLORS</p> <p>NATURAL, PEWTER, WHEAT, BRONZE, BLUE, SLATE, BRONZE-GOLD, BURGUNDY, PURPLE-BLUE, PEACOCK, BLUE-GREEN, CHARCOAL (#4 SCOTCHBRITE FINISH ONLY)</p>	<p>GA. AVAILABLE</p> <p>28 GAUGE (.018")</p>	<p>MATERIALS</p> <p>STAINLESS STEEL + ZALMAG®</p>	<p>FINISH</p> <p>STAINLESS: BRIGHT (BA), MILL (BB)</p> <p>ZALMAG: NATURAL & PRE-PATINA II</p>
			<p>SIZES AVAILABLE</p> <p>8 3/8" x 14 1/2"</p>	



Large Shadow Cup Tile


Large Shadow Cup Tile - Window Head

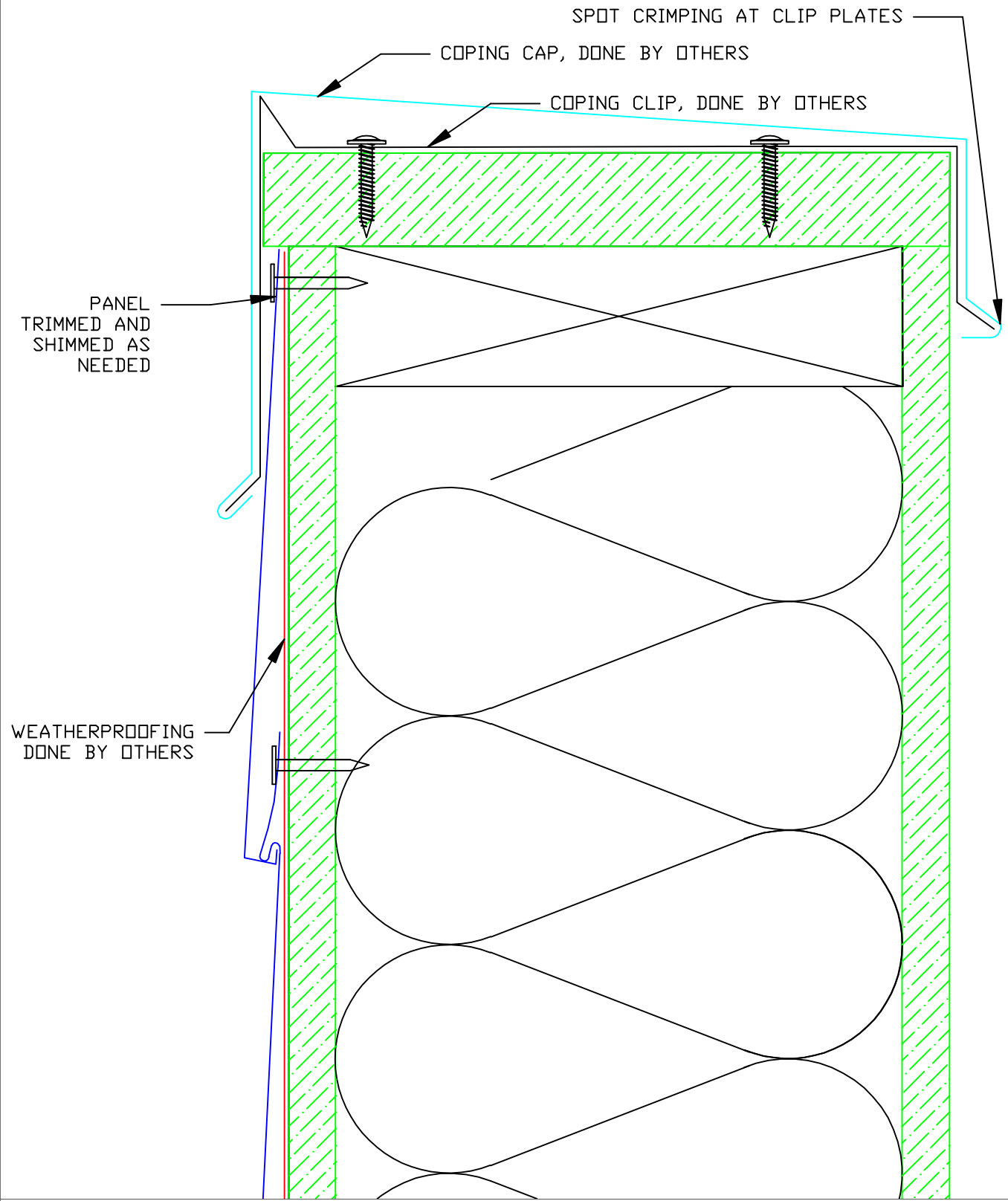
 MILLENNIUM F O R M S <small>*The physics of Light Interference Color (LIC) prevent colored stainless steel from being 100% uniform</small>	*STAINLESS COLORS NATURAL, PEWTER, WHEAT, BRONZE, BLUE, SLATE, BRONZE-GOLD, BURGUNDY, PURPLE-BLUE, PEACOCK, BLUE-GREEN, CHARCOAL (#4 SCOTCHBRITE FINISH ONLY)	GA. AVAILABLE 28 GAUGE (.018")	MATERIALS STAINLESS STEEL + ZALMAG®	FINISH STAINLESS: BRIGHT (BA), MILL (BB) ZALMAG: NATURAL & PRE-PATINA II
			SIZES AVAILABLE	
			8 3/8" x 14 1/2"	



Large Shadow Cup Tile

Large Shadow Cup Tile - Window Jam

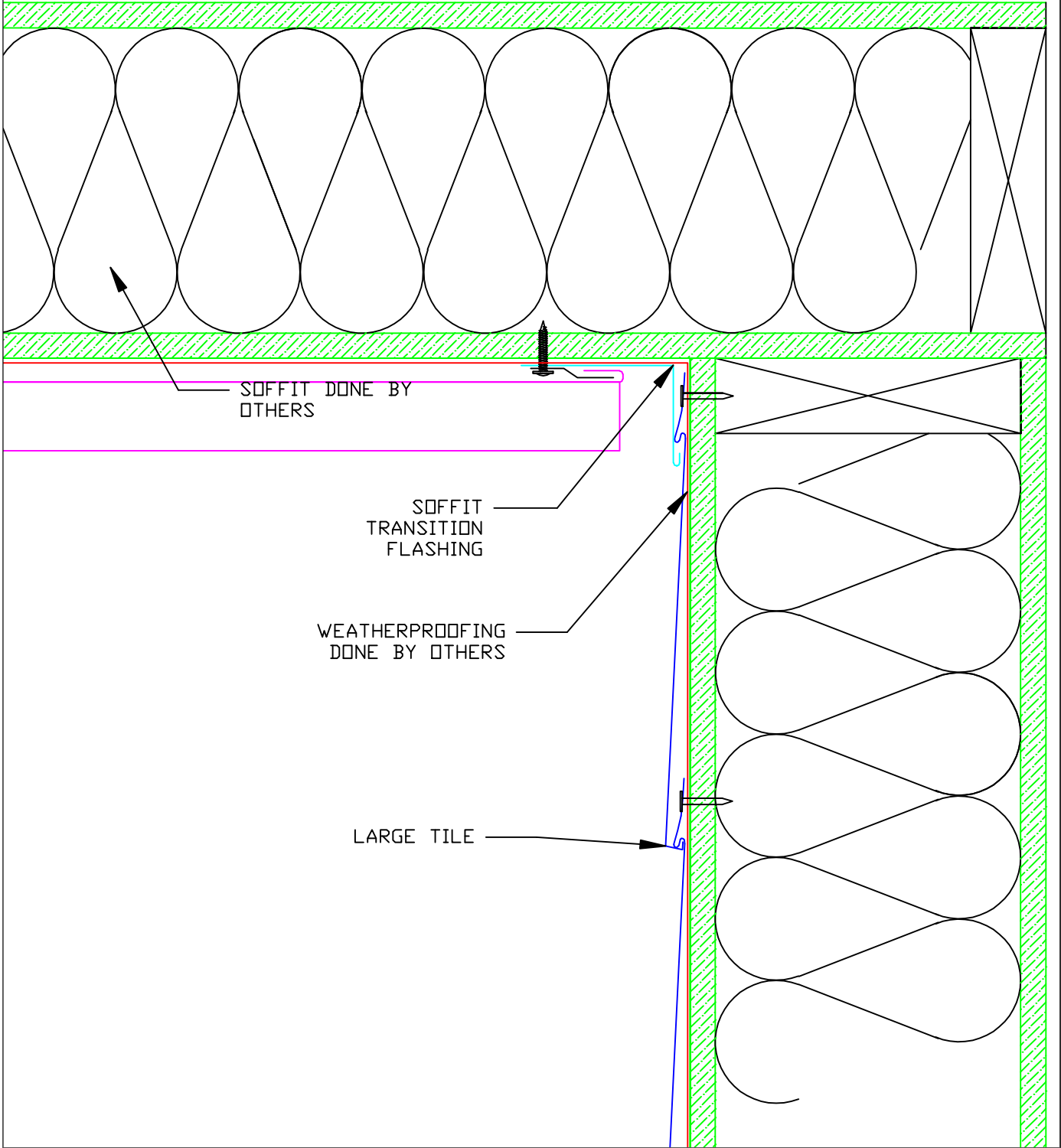
 <p>MILLENNIUM FORMS</p> <p><small>*The physics of Light Interference Color (LIC) prevent colored stainless steel from being 100% uniform</small></p>	<p>*STAINLESS COLORS</p> <p>NATURAL, FEWTER, WHEAT, BRONZE, BLUE, SLATE, BRONZE-GOLD, BURGUNDY, PURPLE-BLUE, PEACOCK, BLUE-GREEN, CHARCOAL (#4 SCOTCHBRITE FINISH ONLY)</p>	<p>GA. AVAILABLE</p> <p>28 GAUGE (.018")</p>	<p>MATERIALS</p> <p>STAINLESS STEEL + ZALMAG®</p>	<p>FINISH</p> <p>STAINLESS: BRIGHT (BA), MILL (BB)</p> <p>ZALMAG: NATURAL & PRE-PATINA II</p>
			<p>SIZES AVAILABLE</p> <p>8 3/8" x 14 1/2"</p>	



Large Shadow Cup Tile


Large Shadow Cup Tile - Coping

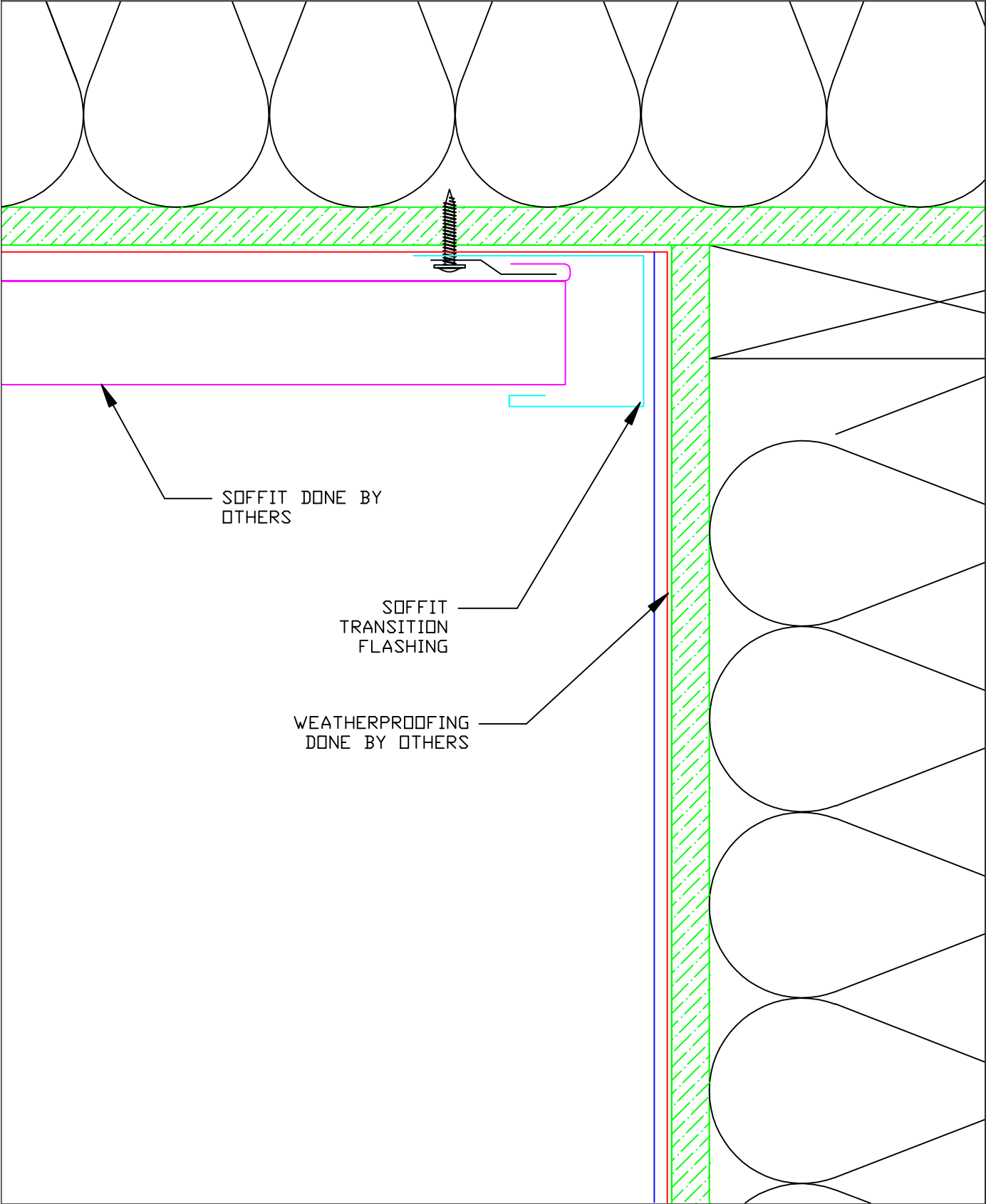
 <p>MILLENNIUM FORMS</p> <p><small>*The physics of Light Interference Color (LIC) prevent colored stainless steel from being 100% uniform</small></p>	<p>*STAINLESS COLORS</p> <p>NATURAL, PEWTER, WHEAT, BRONZE, BLUE, SLATE, BRONZE-GOLD, BURGUNDY, PURPLE-BLUE, PEACOCK, BLUE-GREEN, CHARCOAL (P4/SCOTCHBRITE FINISH ONLY)</p>	<p>GA. AVAILABLE</p> <p>28 GAUGE (.018")</p>	<p>MATERIALS</p> <p>STAINLESS STEEL + ZALMAG®</p>	<p>FINISH</p> <p>STAINLESS: BRIGHT (BA), MILL (BB)</p> <p>ZALMAG: NATURAL & PRE-PATINA II</p>
			<p>SIZES AVAILABLE</p> <p>8 3/8" x 14 1/2"</p>	



Large Shadow Cup Tile


Large Shadow Cup Tile - Termination at Soffit

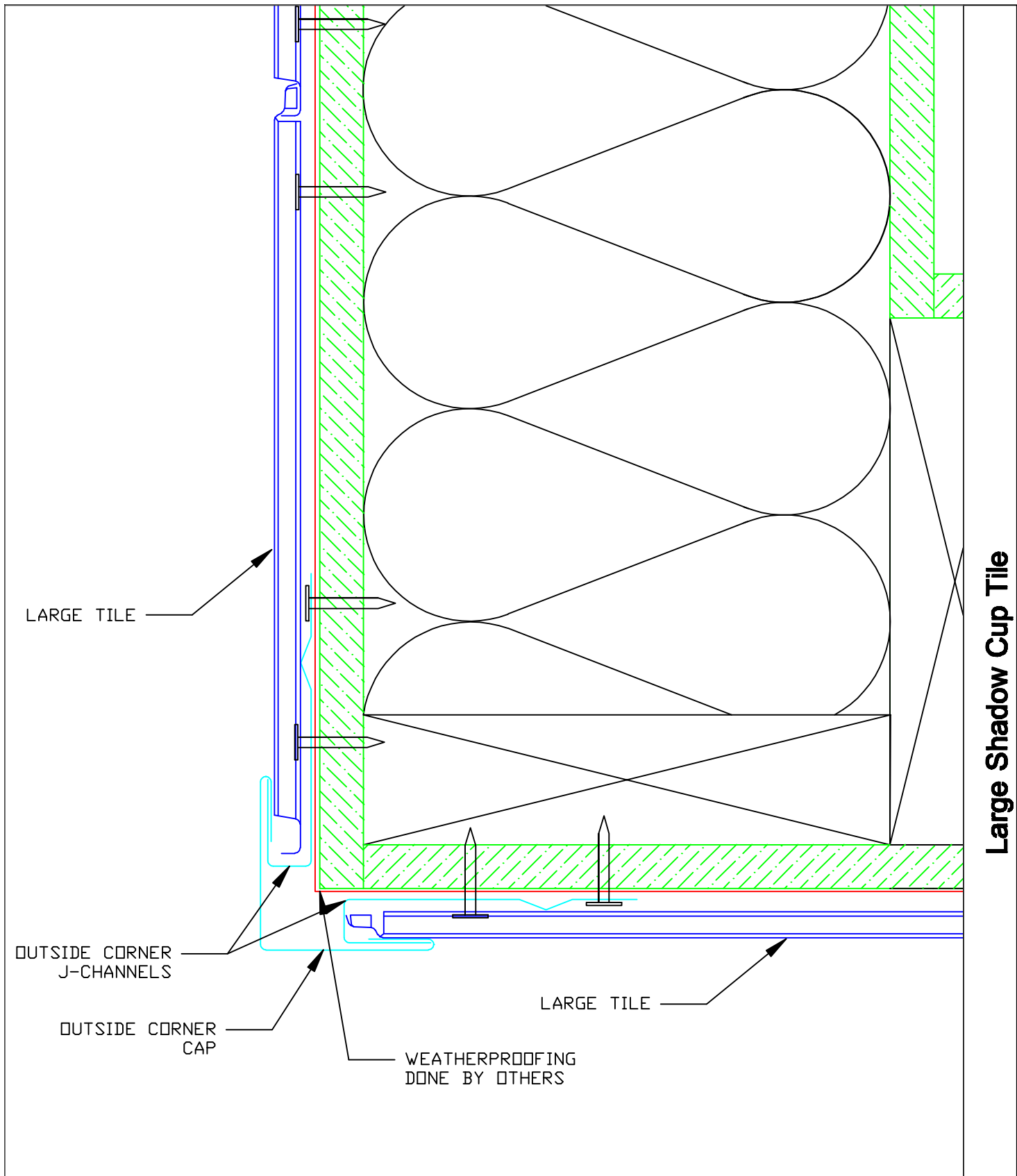
 <p>MILLENNIUM F O R M S</p> <p><small>*The physics of Light Interference Color (LIC) prevent colored stainless steel from being 100% uniform</small></p>	<p>*STAINLESS COLORS</p> <p>NATURAL, PEWTER, WHEAT, BRONZE, BLUE, SLATE, BRONZE-GOLD, BURGUNDY, PURPLE-BLUE, PEACOCK, BLUE-GREEN, CHARCOAL (#4 SCOTCHBRITE FINISH ONLY)</p>	<p>GA. AVAILABLE</p> <p>28 GAUGE (.018")</p>	<p>MATERIALS</p> <p>STAINLESS STEEL + ZALMAG®</p>	<p>FINISH</p> <p>STAINLESS: BRIGHT (BA), MILL (#8)</p> <p>ZALMAG: NATURAL & PRE-PATINA II</p>
			<p>SIZES AVAILABLE</p> <p>8 3/8" x 14 1/2"</p>	




Large Shadow Cup Tile

Large Shadow Cup Tile - Termination at Soffit

 MILLENNIUM F O R M S <small>*The physics of Light Interference Color (LIC) prevent colored stainless steel from being 100% uniform</small>	*STAINLESS COLORS NATURAL, PEWTER, WHEAT, BRONZE, BLUE, SLATE, BRONZE-GOLD, BURGUNDY, PURPLE-BLUE, PEACOCK, BLUE-GREEN, CHARCOAL (#4 SCOTCHBRITE FINISH ONLY)	GA. AVAILABLE 28 GAUGE (.018")	MATERIALS STAINLESS STEEL + ZALMAG®	FINISH STAINLESS: BRIGHT (BA), MILL (BB) ZALMAG: NATURAL & PRE-PATINA II
			SIZES AVAILABLE	
			8 3/8" x 14 1/2"	

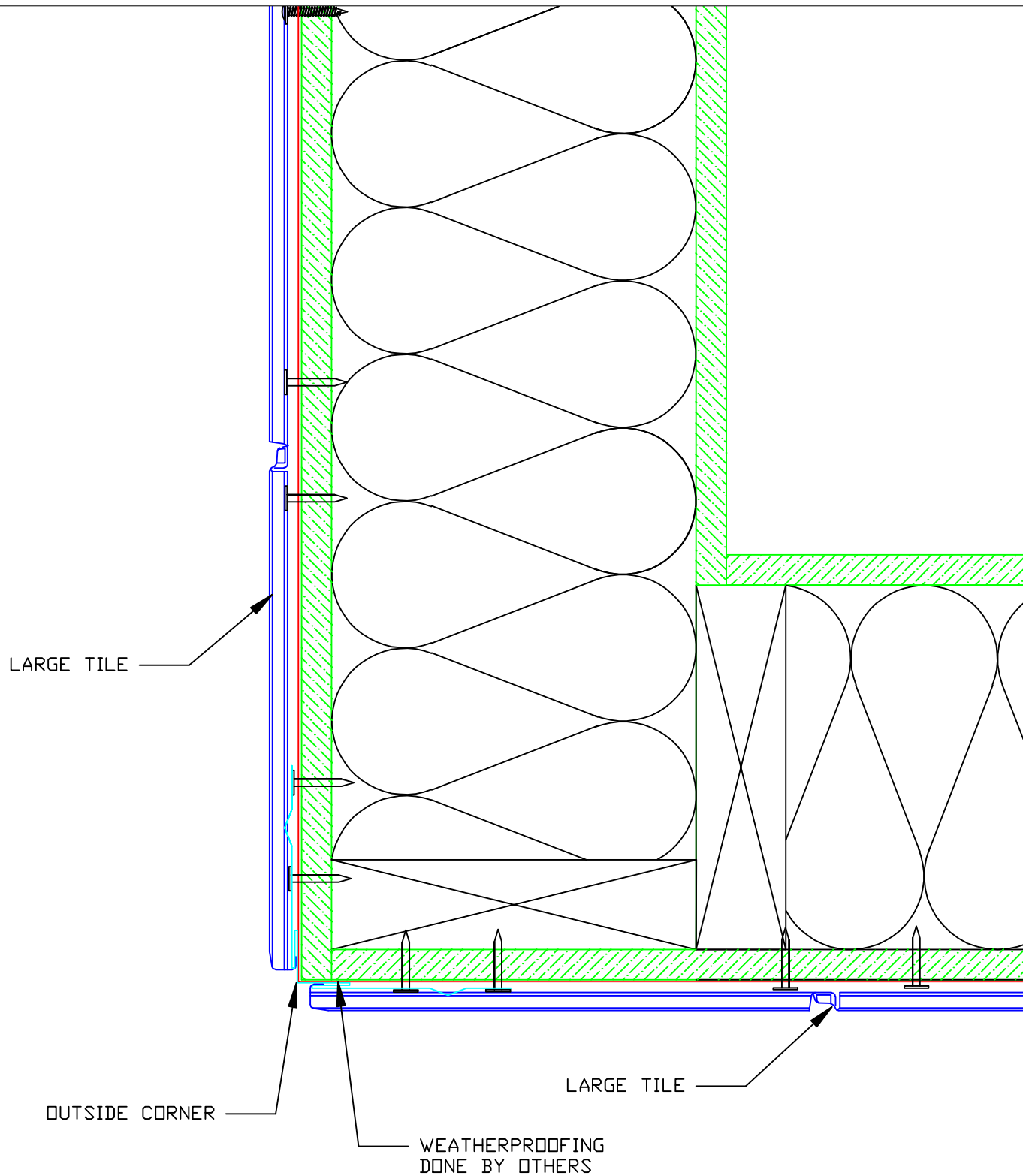


Large Shadow Cup Tile - Outside Corner (3-Piece)

 <p>MILLENNIUM F O R M S</p> <p><small>*The physics of Light Interference Color (LIC) prevent colored stainless steel from being 100% uniform</small></p>	<p>*STAINLESS COLORS</p> <p>NATURAL, PEWTER, WHEAT, BRONZE, BLUE, SLATE, BRONZE-GOLD, BURGUNDY, PURPLE-BLUE, PEACOCK, BLUE-GREEN, CHARCOAL (#4 SCOTCHBRITE FINISH ONLY)</p>	<p>GA. AVAILABLE</p> <p>28 GAUGE (.018")</p>	<p>MATERIALS</p> <p>STAINLESS STEEL + ZALMAG®</p>	<p>FINISH</p> <p>STAINLESS: BRIGHT (BA), MILL (BB)</p> <p>ZALMAG: NATURAL & PRE-PATINA II</p>
			<p>SIZES AVAILABLE</p> <p>8 3/8" x 14 1/2"</p>	


Large Shadow Cup Tile

DETAIL
7A

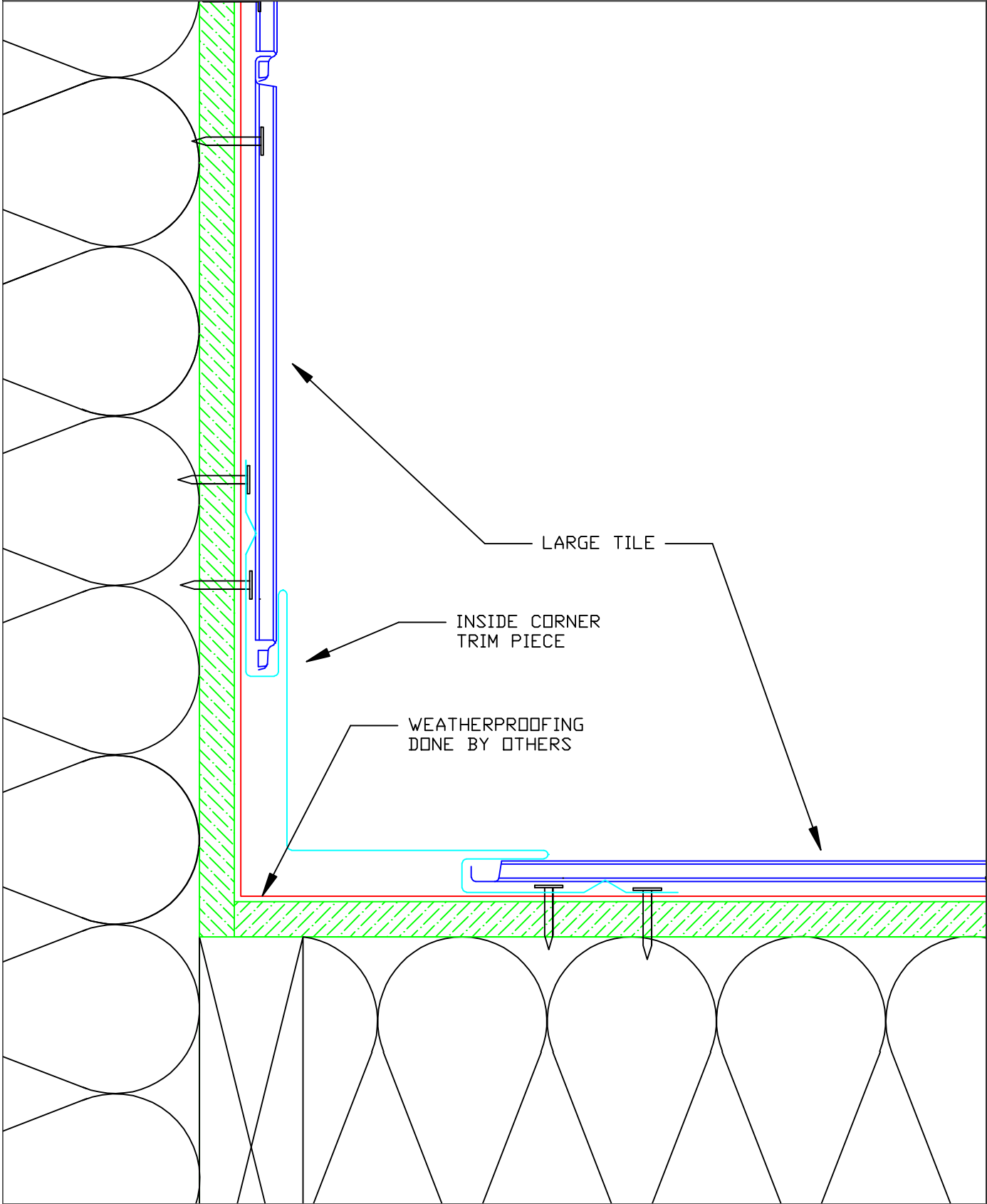


Large Shadow Cup Tile

Large Shadow Cup Tile - Outside Corner (1-Piece)


 <p>MILLENNIUM F O R M S</p> <p><small>*The physics of Light Interference Color (LIC) prevent colored stainless steel from being 100% uniform</small></p>	<p>*STAINLESS COLORS</p> <p>NATURAL, PEWTER, WHEAT, BRONZE, BLUE, SLATE, BRONZE-GOLD, BURGUNDY, PURPLE-BLUE, PEACOCK, BLUE-GREEN, CHARCOAL (#4 SCOTCHBRITE FINISH ONLY)</p>	<p>GA. AVAILABLE</p> <p>28 GAUGE (.018")</p>	<p>MATERIALS</p> <p>STAINLESS STEEL + ZALMAG®</p>	<p>FINISH</p> <p>STAINLESS: BRIGHT (BA), MILL (BB)</p> <p>ZALMAG: NATURAL & PRE-PATINA II</p>
			<p>SIZES AVAILABLE</p> <p>8 3/8" x 14 1/2"</p>	

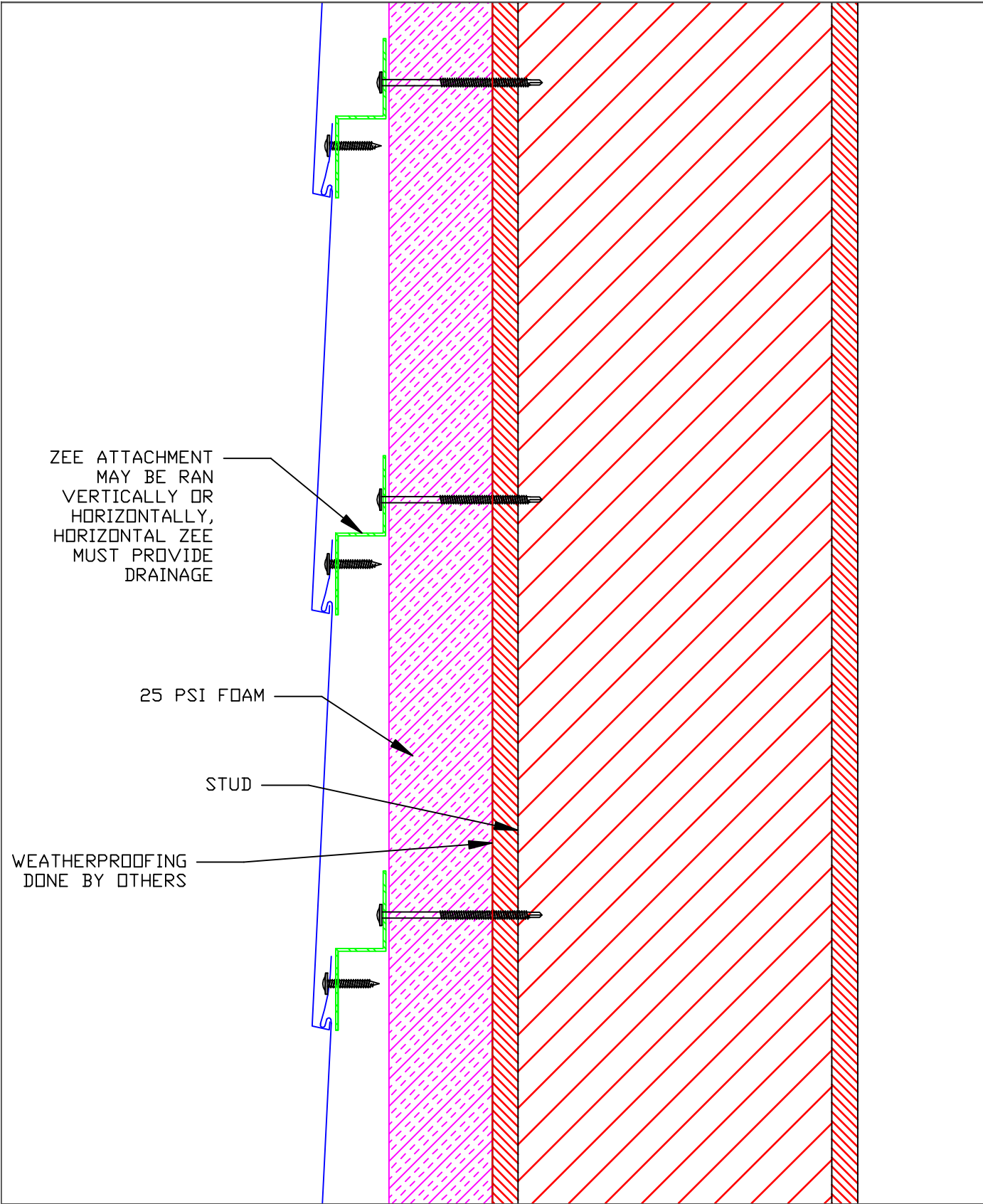
DETAIL
7B



Large Shadow Cup Tile


Large Shadow Cup - Inside Corner

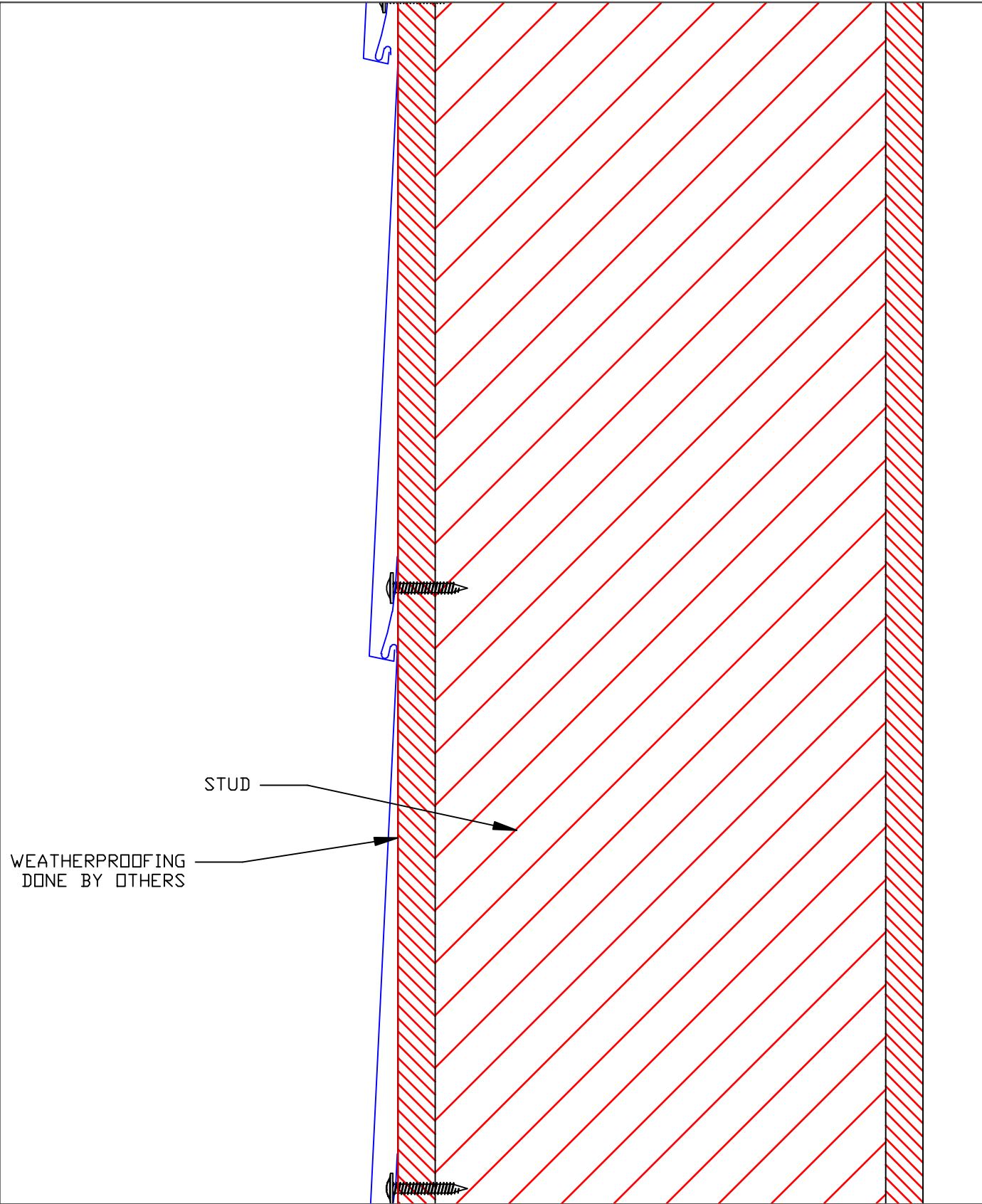
 MILLENNIUM FORMS <small>*The physics of Light Interference Color (LIC) prevent colored stainless steel from being 100% uniform</small>	*STAINLESS COLORS NATURAL, PEWTER, WHEAT, BRONZE, BLUE, SLATE, BRONZE-GOLD, BURGUNDY, PURPLE-BLUE, PEACOCK, BLUE-GREEN, CHARCOAL (#4 SCOTCHBRITE FINISH ONLY)	GA. AVAILABLE 28 GAUGE (.018")	MATERIALS STAINLESS STEEL + ZALMAG®	FINISH STAINLESS: BRIGHT (BA), MILL (BB) ZALMAG: NATURAL & PRE-PATINA II
			SIZES AVAILABLE	
			8 3/8" x 14 1/2"	



Large Shadow Cup Tile


Large Shadow Cup Tile - Wall Assembly Over Exterior Insulation

 <p>MILLENNIUM F O R M S</p> <p><small>*The physics of Light Interference Color (LIC) prevent colored stainless steel from being 100% uniform</small></p>	<p>*STAINLESS COLORS</p> <p>NATURAL, PEWTER, WHEAT, BRONZE, BLUE, SLATE, BRONZE-GOLD, BURGUNDY, PURPLE-BLUE, PEACOCK, BLUE-GREEN, CHARCOAL (#4 SCOTCHBRITE FINISH ONLY)</p>	<p>GA. AVAILABLE</p> <p>28 GAUGE (.018")</p>	<p>MATERIALS</p> <p>STAINLESS STEEL + ZALMAG®</p>	<p>FINISH</p> <p>STAINLESS: BRIGHT (BA), MILL (BB) ZALMAG: NATURAL & PRE-PATINA II</p>
			<p>SIZES AVAILABLE</p> <p>8 3/8" x 14 1/2"</p>	



Large Shadow Cup Tile

Large Shadow Cup Tile - Wall Assembly Over Plywood

 <p>MILLENNIUM F O R M S</p> <p><small>*The physics of Light Interference Color (LIC) prevent colored stainless steel from being 100% uniform</small></p>	<p>*STAINLESS COLORS</p> <p>NATURAL, PEWTER, WHEAT, BRONZE, BLUE, SLATE, BRONZE-GOLD, BURGUNDY, PURPLE-BLUE, PEACOCK, BLUE-GREEN, CHARCOAL (#4 SCOTCHBRITE FINISH ONLY)</p>	<p>GA. AVAILABLE</p> <p>28 GAUGE (.018")</p>	<p>MATERIALS</p> <p>STAINLESS STEEL + ZALMAG®</p>	<p>FINISH</p> <p>STAINLESS: BRIGHT (BA), MILL (BB) ZALMAG: NATURAL & PRE-PATINA II</p>
			<p>SIZES AVAILABLE</p> <p>8 3/8" x 14 1/2"</p>	

DETAIL
9B