



FACADES & CLADDING



ARCHITECTURAL METALWORK



METAL ROOFING



ARCHITECTURAL
PANEL SYSTEMS
AUSTRALIA

Specialists In Facade Fabrication & Architectural Metalwork

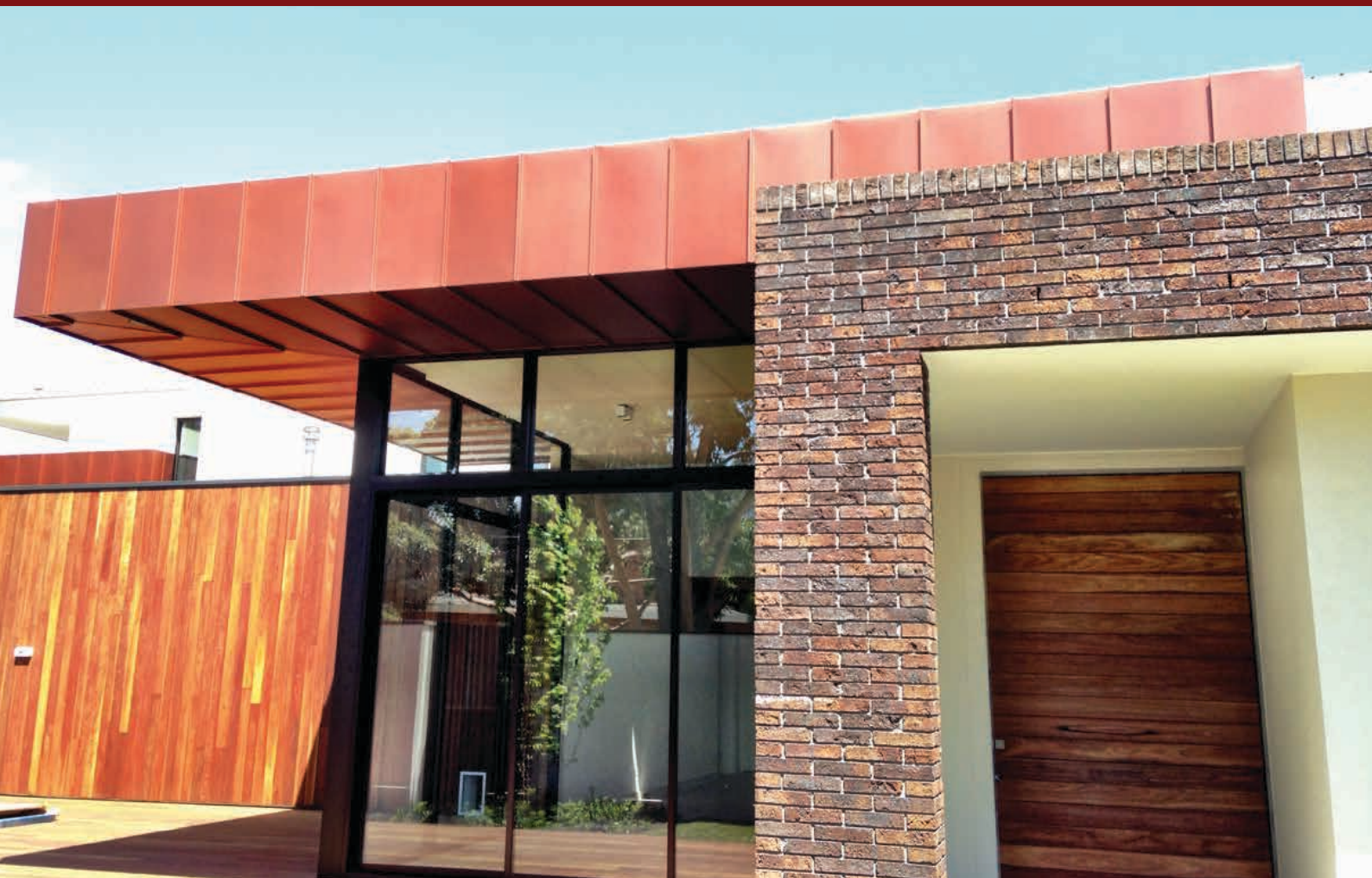
3D & CAD DRAWINGS



DESIGN & ENGINEERING



PROTOTYPE MODELING



ABOUT US

Architectural Panel Systems are a family owned and operated company specialising in the design and fabrication of metal facades, cladding and roofing, specifically for Architecturally designed projects. Our services also include design assistance, 3D & CAD Drawings, facade engineering, prototype modelling and project specific detailing.

Our current management staff combine for more than 60 years experience in the industry.

Architectural Panel Systems is committed to working closely with Architects and Building Designers, in collaboration with chosen building contractors and our approved installers to achieve the desired finish. We provide attention to detail on all projects and dedicate our time to understanding the customer's requirements during enquiry, design and manufacturing stages. Our end goal with this approach is to ensure the correct system is used and customer satisfaction is achieved at the completion of each project. Knowledge, reliability, customer service and quality are all part of the package offered by Architectural Panel Systems with the aim of developing a long term relationship with all parties involved.

Our showroom, manufacturing and production facility operates from 2 factories, side by side, where we house state of the art rollformers, machinery and tooling to assist us with producing high quality precision cladding and facade solutions.

We have our own fleet of tray trucks for direct site deliveries, with all drivers being full time employees of the company. Each drivers responsibility is to handle your products with care, deliver on time and assist you with any on site additional requirements.

Architectural Panel Systems welcome the opportunity to work with people from all industries, on any size project, including one-off jobs, and residential right through to some of the largest and most well known commercial projects in the country.

Our wide range of products and services are designed to make Architectural Panel Systems a single source, one stop destination as we handle the whole process from initial enquiry, design, drawings and engineering, through to completion of the manufactured product and delivery direct to site.

COMPANY PROJECT PORTFOLIO

Our experience, competence and reputable history enables us to work successfully and collectively with a range of trades and companies. Architectural Panel Systems Australia have showcased their skill and design on some of Australia's largest and most well known projects including;

- » Melbourne Rectangular Stadium (AAMI Park)
- » Margaret Court Arena Redevelopment
- » Shrine Of Remembrance
- » Westpac Centre, Melbourne
- » Kew Cottages Redevelopment
- » NAB Bank Building - 700 Bourke St, Docklands
- » The Myer Emporium, Melbourne CBD
- » Simonds Stadium Grandstand Developments, Geelong
- » City West Police Complex, Melbourne
- » Craigieburn Train Maintenance Facility
- » Melbourne International Airport, Tullamarine
- » Werribee Plaza
- » The Hub, Richmond
- » Epworth Hospital
- » Geelong Library & Heritage Centre
- » St Josephs Mews, Hawthorn
- » Spencer St Train Station
- » Queenscliff Harbour Development
- » Cranbourne Shopping Centre
- » Waurn Ponds Police & SES
- » Geelong College
- » Kardinia International College
- » South Melbourne Lifestyle Centre
- » Smith St, Collingwood
- » Virgin Lounge, Tullamarine Airport
- » Westfield Shopping Centre, Geelong
- » Little Creatures Brewery, Geelong
- » Quarantine Facility, Mickleham
- » Geelong Grammar School
- » PPHA Essendon

CAPABILITIES & PRODUCTS



CAPABILITIES

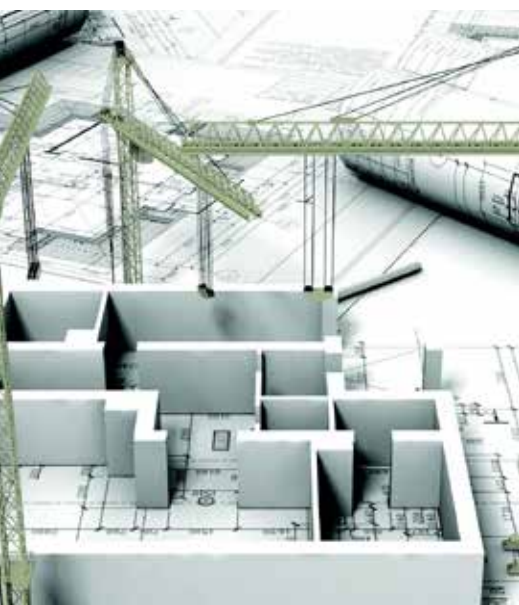
- » Specialists In All Forms Of Facade Fabrication
- » Long Length Folding - Up To 8.6 Metres
- » Fabricated Metalwork
- » Facade Engineering
- » Welding (Mig / Tig)
- » Soldering
- » Lasercutting
- » Turret Punching
- » Perforating
- » Plate & Sheet Fabrication
- » CAD Services
- » Architectural Design Assistance
- » Design & Construct
- » Corporate Branding
- » Mass Production
- » Guillotining
- » Pressing
- » Plate & Sheet Rolling
- » Curving
- » Powdercoating
- » Anodising
- » Galvanising

PRODUCTS

- » Interlocking Panel
- » Standing Seam
- » Nail Strip
- » Snap-Lock
- » Batten Seam
- » Flat Lock Panel
- » Cassette Panel
- » APS Tiles
- » Millennium Tiles
- » Adeka
- » Dexter
- » Curved Standing Seam
- » Heritage Corrugated
- » Composite Panel
- » Composite Substrate
- » Perforated Panels
- » Picture Perforated
- » Expanded Metal Mesh
- » Rainscreens
- » Balustrade Screening
- » Column Covers
- » Feature Fencing
- » Interior Cladding
- » Feature Cladding
- » Underdecking
- » Sub Framing
- » Architectural Gutter Systems
- » Standing Seam Safety Brackets
- » Tooling

MATERIALS

- » Copper
- » Zinc
- » Corten
- » Brass
- » Bronze
- » Stainless Steel
- » Aluminium
- » Timbacad
- » Colorbond Metallic
- » Colorbond Ultra
- » Coolmax
- » Colorbond
- » Zincalume
- » Galvanised
- » Mild Steel
- » Rimex



INTERLOCKING PANEL

Architectural Panel Systems Interlocking Panel provides a modern solution for wall cladding, facades and soffit lining.

It's flat, recessed express joint system is a sophisticated style cladding that has a uniquely elegant appearance.

Characteristics

- » Concealed fix cladding system
- » Attractive recessed or express joint system
- » Versatile and lightweight panels
- » Continuous flush surface finish
- » Modern and clean appearance

Benefits

- » Minimal maintenance requirements
- » Easy installation via a tongue and groove system
- » Allows the building to breathe via a natural air gap

Design & Specification

- » Vertical, horizontal and diagonal laying of panels
- » Tapered and splayed panels
- » Staggered, brick pattern options
- » Fully customised panel width
- » Fully customised express joint width
- » Continuously rollformed long length panels
- » Endless possibilities for implementing design ideas
- » Perforated finishes available
- » Create a facade with multiple, varied width panels, installed in sequence or sporadically to create a very modern, unique and random effect

Uses

- » Commercial
- » Residential
- » Industrial
- » Interior
- » Exterior
- » Wall Cladding
- » Facades
- » Soffit Lining

This visually striking system is an ideal option for those projects looking to achieve a long, thin, flat and clean finish to their facade or designated area.



STANDING SEAM

Our Standing Seam profile provides an ideal solution for both modern contemporary designs and traditional heritage style architecture.

This system was first developed in Europe and has been used and proven commonly for 200 years.

Standing Seam is a timeless style profile, with its classic longitudinal joint system, continuous long lengths, vertical ribs and elegant defined lines.

Traditional architecture or modern design will be highlighted perfectly thanks to the systems wide range of detail and flexibility.

Characteristics

- » Horizontal or vertical panels
- » Concealed fix system
- » Attractive longitudinal joints
- » Versatile and lightweight
- » Continuous long length panels
- » Modern, clean finish
- » Flexibility suitable for all types of designs
- » Fine seams for a slimline look
- » Blend in with traditional and modern designs

Benefits

- » Minimal maintenance requirements
- » Easy installation via a concealed clip system
- » Allows the building to breathe via a natural air gap
- » Highly resistant to strong winds
- » Fast and easy installation making it cost effective
- » Low risk of water penetration
- » Lightweight system

Design & Specification

- » Vertical, horizontal and diagonal laying of panels
- » Tapered and splayed panels
- » Staggered / brick pattern options
- » Fully customised panel width
- » Endless possibilities for implementing design ideas
- » Perforated finishes
- » Creating a facade with multiple, varied width panels, installed in sequence or sporadically to create a very modern, random effect
- » All types of roofs and facades
- » All shapes - Flat, Curved, Concave, Convex, Conical and Domes

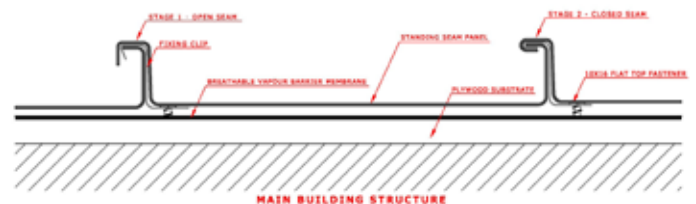
As light, temperature and the natural environment changes, so does the visual texture and appearance of the Standing Seam panel when using various metals.

When it comes to more complex and detailed designs, the Standing Seam system presents a technologically advanced solution.

Standing Seam is widely used for its top performing attributes; weather resistance to harsh climates and its ability to create watertight solutions on roof and facade applications, even in areas subject to coastal spray, snowfall, high winds and heavy rain.

Uses

- » Commercial
- » Residential
- » Industrial
- » Interior
- » Exterior
- » Roofing
- » Wall Cladding
- » Facades
- » Soffit Lining



**ARCHITECTURAL
PANEL SYSTEMS
— AUSTRALIA —**

NAIL STRIP

Nail Strip panels are a simple, cost effective option for covering small and large areas on wall cladding, facades and roofing projects, without compromising on quality or finish.

The defined rib and flat tray system provides a uniquely elegant appearance.

The male / female relationship between the panels creates a very similar look to the Standing Seam profile, without the use of clips or mechanical seaming tools, helping keep labour costs at a minimum to create a very economical cladding and roofing system.

Characteristics

- » Concealed fix cladding and roofing system
- » Clearly defined vertical ribs
- » Versatile and lightweight
- » Continuous flat panel surface finish
- » Suitable for modern and heritage style projects
- » Quick and efficient installation

Benefits

- » Minimal maintenance requirements
- » Ease of installation via a direct fix method
- » No clips or seam closing tools required for installation

Design & Specification

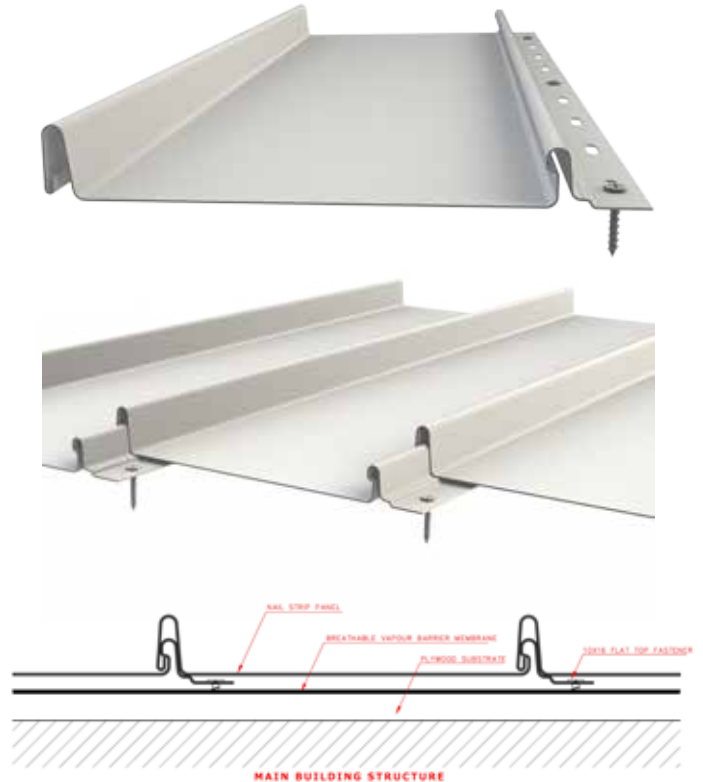
- » Vertical, horizontal and diagonal laying of panels
- » Staggered, brick pattern options
- » Fully customised panel widths
- » 25mm and 38mm rib heights available
- » Endless possibilities for implementing design ideas

Uses

- » Commercial
- » Residential
- » Industrial
- » Interior
- » Exterior
- » Roofing
- » Wall Cladding
- » Facades
- » Soffit Lining

Nail Strip panels are available in both a 25mm and a 38mm rib height, with fully customised panel widths and cut to length features. The Nail Strip panel is able to accommodate almost all roofing and cladding applications.

Nail Strip panels are ideal for those looking to achieve a clearly defined rib, flat panel appearance on their project.



FLAT LOCK PANEL

Flat Lock Panels are a simple yet unique and elegant cladding system that creates a longitudinal flat seam. These panels can be installed horizontally or vertically depending on customer preference.

This tile like system is a simple factory formed panel with interlocking hook fold seams used on all 4 sides of the panel, with a concealed fixing clip which is covered by the overlap of the following adjoining panel.

Due to all panels being manufactured custom made in house, Flat Lock Panel's are available in

a multitude of shapes and sizes, essentially offering endless design possibilities.

The Flat Lock Panel system is a great product where overall build up and depth are a factor, as the panel is approximately 6mm thick only from front to back of the panel.

Flat Lock Panel's are a great solution for projects which may be geometrically or design complicated.

Overall, a reliable and aesthetically pleasing wall cladding system.

Characteristics

- » Horizontal and vertical panel installations
- » Concealed fix cladding system
- » Shallow panel depth
- » Factory pre-formed tiles
- » Flat seamed joints
- » Versatile and lightweight
- » Continuous long length, flat panel surface finish
- » Quick and efficient installation process

Benefits

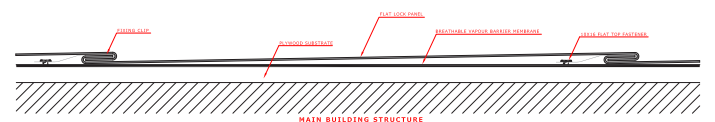
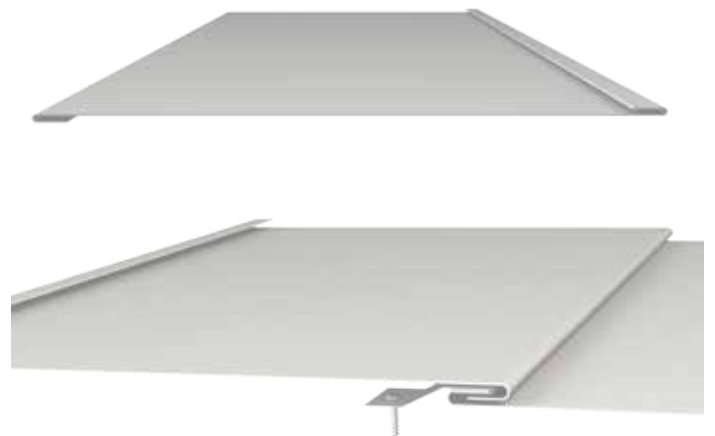
- » Minimal maintenance requirements
- » Ease of installation via simple under / over cloak system
- » No tools required for installation

Design & Specification

- » Vertical and horizontal laying of panels
- » Staggered, brick and tile pattern options
- » Fully customised panel widths
- » Limitless possibilities for implementing design ideas
- » Curved walls, for vertical installations, subject to radius

Uses

- » Commercial
- » Residential
- » Industrial
- » Interior
- » Exterior
- » Wall Cladding
- » Facades
- » Soffit Lining



CASSETTE PANEL

The Cassette Panel system is a concealed fix external cladding system, used in both vertical and horizontal applications, which is directly screw fixed to a carefully setout load bearing structure.

Cassette's are recommended and commonly used where larger looking panels are required, as our Cassette system is generally fabricated from a minimum of 1.5mm thick material, allowing for greater spans and larger panels.

This is an innovative facade solution that gives the end user a modern and extremely flat appearance due to the rigidity of the panel.

Characteristics

- » Horizontal and vertical panel installations
- » Concealed fix cladding system
- » Cassette Detail - Adds Depth To Any Facade Application
- » Factory pre-formed panels
- » Large Defined Express Joints

Benefits

- » Minimal maintenance requirements
- » Easy installation via a concealed clip system
- » Allows the building to breathe via a natural air gap
- » Highly resistant to strong winds
- » Fast and easy installation making it cost effective
- » Low risk of water penetration
- » No Need For Silicone Or Caulk To Seal

Design & Specification

- » Vertical, horizontal and diagonal laying of panels
- » Tapered and splayed panels
- » Staggered, brick pattern options
- » Fully customised panel width
- » Fully customised express joint width
- » Endless possibilities for implementing design ideas
- » Perforated finishes available
- » Create a facade with multiple, varied width panels, installed in sequence or sporadically to create a very modern, unique and random effect

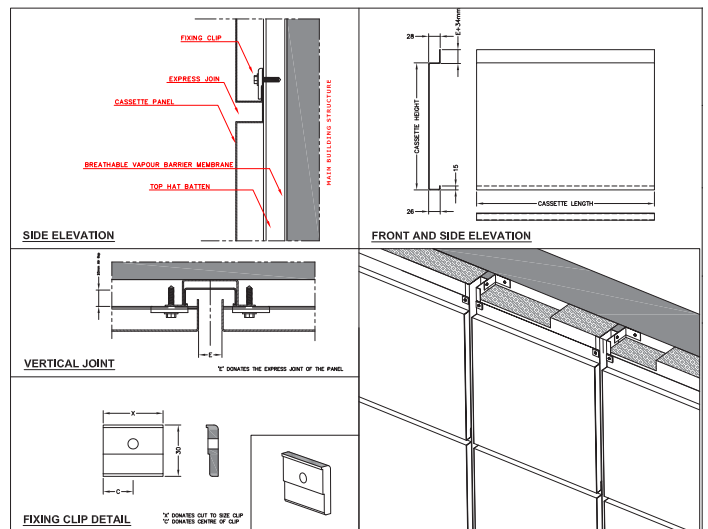
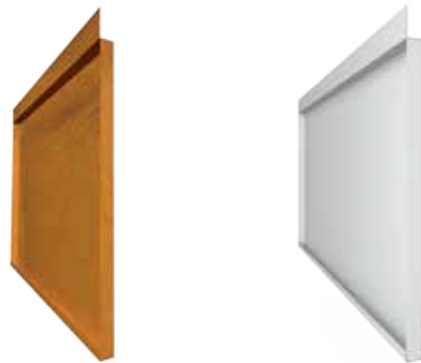
Uses

- » Commercial
- » Residential
- » Industrial
- » Interior
- » Exterior
- » Wall Cladding
- » Facades
- » Soffit Lining

All Cassette Panel's are pre-fabricated in the factory before being delivered to site.

The added benefit of our Laser Cutting facility allows us to create more complex shapes and designs, offering unique aesthetics to any facade.

Unlike other large panel systems, our Cassette Panel's are virtually maintenance free and require no silicone or caulked joints.



Timbaclad is a unique metal cladding system, ideal for use on any project that aims to achieve the natural look, feel, warmth and texture of timber cladding, without the downsides of using real timber.

Timber is a timeless and classic material which blends naturally into all environments, but ongoing maintenance, fading, splitting and premature aging tends to find people looking for alternative finishes. When deciding on a timber cladding for your next project, consider using Timbaclad and keep the warmth and natural feel, while reaping the practical benefits of a steel based product.

Characteristics

- » Concealed fix cladding system
- » Attractive recessed or express joint system
- » Continuous flush surface finish
- » Modern and clean appearance

Benefits

- » Low maintenance
- » Cost Effective
- » Ease of installation via a tongue and groove system
- » Allows for natural ventilation to the building
- » 100% recyclable
- » Versatile and lightweight panels
- » Durability of steel
- » Moisture resistant finish
- » Unaffected by termites and insects
- » Suited for Australia's harsh climate
- » No sealing, oiling or top coating's required

Design & Specification

- » Timbaclad is available in 3 unique finishes, Mild Mahogany, Natural Jarrah and our signature finish, Native Cherry, all stocked and readily available at all times. These colours reflect the natural finishes and grains of timber, giving the client multiple choices to suit their requirements.
- » Vertical, horizontal and diagonal laying of panels
- » Fully customised express joint width
- » Fully customised panel width
- » Endless possibilities for implementing design ideas
- » Colour matched accessories and flashing
- » Custom colours and orders available
- » Continuously rollformed long length panels

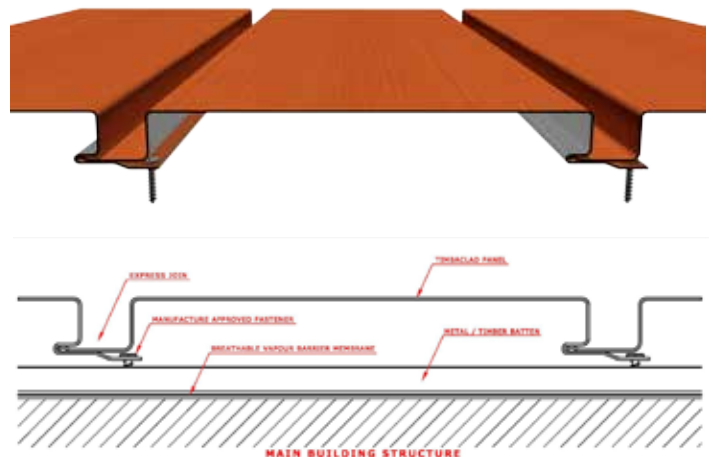
The concealed fixing method, distinctive express joint, along with the smart choice of a steel base provides an aesthetic appeal which is strong, durable and designed to withstand the harsh Australian climate.

Areas Of Application

- » Wall cladding and facades
- » Interior and exterior applications
- » Soffit linings
- » Underdecking
- » Privacy Screening
- » Fencing
- » Louvres
- » Balustrading
- » Architectural metalwork
- » Shop fitouts
- » Garage doors

Uses

- » Commercial
- » Residential
- » Industrial
- » New Buildings
- » Renovations



WEATHERBOARD PANEL

Steel Weatherboard panel's are a great option for those wanting to achieve the real look of a weatherboard panel without having to be concerned about the ongoing maintenance, fading, splitting, aging and other downfalls associated with using real timber.

Weatherboard's are a timeless classic and a common product within the industry, however now we achieve the same look, while reaping all the practical benefits of using a lightweight steel based, Australian Made product.

Characteristics

- » Concealed fix cladding system
- » Attractive joints
- » Continuous flush and seamless surface finish
- » Modern and clean appearance

Benefits

- » Low maintenance
- » Cost Effective
- » Ease of installation
- » Allows for natural ventilation to the building
- » 100% recyclable
- » Versatile and lightweight panels
- » No tools required for installation
- » Durability and strength of steel
- » Moisture resistant finish
- » Unaffected by termites and insects
- » Suited for Australia's harsh climate
- » No sealing, oiling or top coating's required (like true timber products require)

Design & Specification

Steel weatherboard panels are available in a wide range of colours, sizes and material finishes.

This allows the customer, or specifying contractor a lot of freedom in design and limitless possibilities for implementing design ideas.

- » Horizontal laying of panels to replicate the natural weatherboard panel look.
- » Custom face / panel width
- » Colour matched accessories and flashing
- » Custom colours and orders available
- » Cut to length panels to limit waste on site
- » Suits both traditional and contemporary applications
- » Mitred and folded corners to avoid unsightly flashing

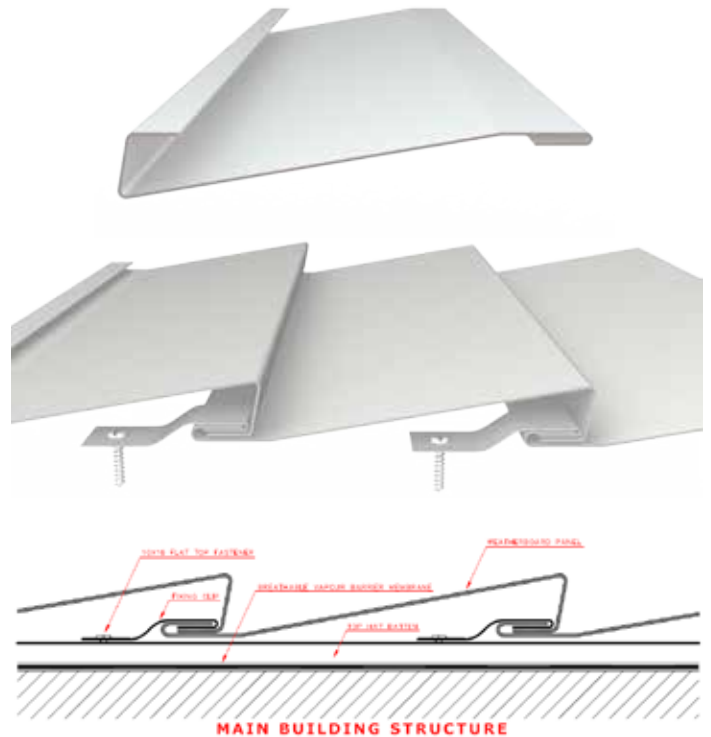
The concealed fixing method, along with the smart choice of a steel base provides an aesthetic appeal which is strong, durable and designed to withstand the harsh Australian climate.

Areas Of Application

- » Most commonly for Wall Cladding & Facades.

Uses

- » Commercial
- » Residential
- » Industrial
- » New Buildings
- » Renovations



FLAT STICK METHOD

The Architectural Panel Systems “Flat Stick Method” is a cost effective alternative when large faced panels are required, but using a Cassette System is not an option due to design or budget concerns.

No panel folding, critical setting out, reverse gutters or top hats are just a few of the benefits of using a Flat Stick Method as opposed to a Cassette Panel. The “depth” perspective of the panel is lost, as it is not folded, but from a distance, the finish is hard to tell.

Characteristics

- » Concealed fix cladding system
- » Attractive caulked joints
- » Continuous flush and seamless surface finish
- » Modern and clean appearance

Benefits

- » Low maintenance
- » Cost effective option to a Cassette Panel system
- » Ease of installation
- » Allows for natural ventilation to the building
- » 100% recyclable
- » Durability and strength of steel

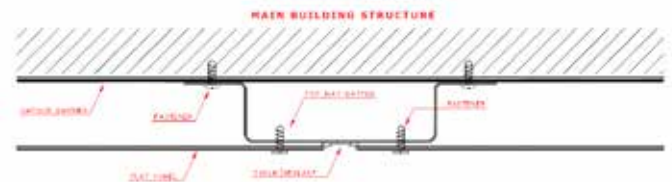
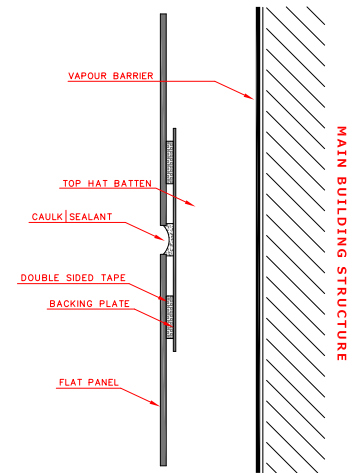
Design & Specification

- » Vertical, horizontal and diagonal laying of panels
- » Virtually endless possibilities for implementing design ideas
- » Tapered and splayed panels
- » Staggered, brick pattern options
- » Fully customised panel width
- » Fully customised panel length
- » Fully customised express joint width
- » Lasercutting available for window reveals, doors, pipes and any other obscurities
- » Large spans
- » Perforated finishes available
- » Create a facade with multiple, varied width panels, installed in sequence or sporadically to create a very modern, unique and random effect

The Flat Stick Method by Architectural Panel System’s was designed particularly around creating a system that replicated the expensive Cassette Panel system but within budget and to suit ANY design scope, renovation, alterations or new builds.

Uses

- » Commercial
- » Residential
- » Industrial
- » Interior
- » Exterior
- » Wall Cladding
- » Facades
- » Soffit Lining



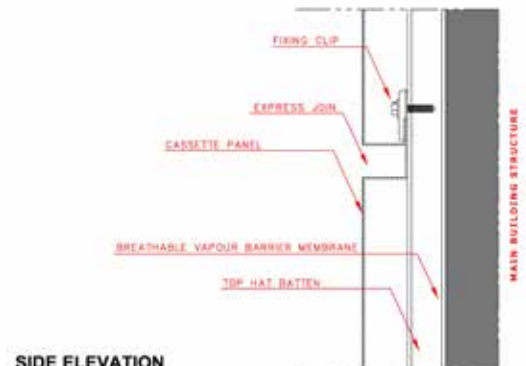
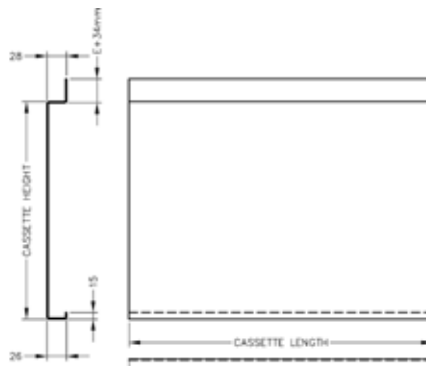
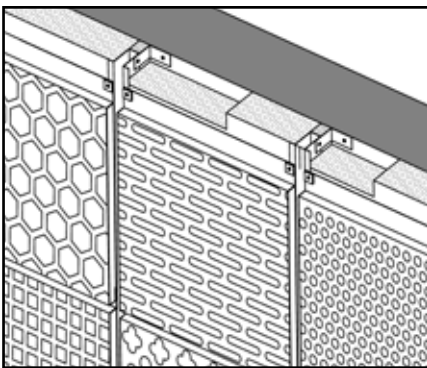
PERFORATED PANELS

All of Architectural Panel Systems range of product are available in various perforated finishes and patterns to add an extra dimension to any project, whether it be purely for aesthetic value, functionality or both purposes

Perforations have been used for centuries as a

way of controlling light, noise and privacy. More recently for adding a distinctive, luxurious edge to any project.

We offer a range of standard and custom perforations in all forms of metals and materials.



Benefits

- » Light control
- » Privacy control
- » Acoustic purposes
- » Lightweight option
- » Allows for natural ventilation to the building
- » 100% recyclable
- » Durability and strength of steel

Design & Specification

- » Standard pattern range
- » Custom patterns
- » Picture Perforated
- » Folding, Lasercutting, Welding and full fabrication services to panels

Uses

- » Commercial
- » Residential
- » Industrial
- » Interior
- » Exterior
- » Wall Cladding
- » Facades
- » Ceilings
- » Soffit Lining
- » In-Fill Panels
- » Screens
- » Column Covers

UNDERDECK

Underdeck is an Australian made and manufactured product designed to solve industry problems for those who want to utilise their space underneath an outdoor deck by keeping it dry during wet periods and also expanding their living space and outdoor usage.

Underdeck transforms the unsightly underside of your outdoor decking into a desirable, beautiful and usable outdoor living area all year round.

Until now, there has been no easy way to cover the underside of your decking.

Underdeck panels catch the water dripping through the decking boards and channels the water away to the gutter running along the front edge.

Not only is Underdeck an ideal solution aesthetically, but it is also an efficient way of draining water while waterproofing your decking area.

Underdeck comes in our Timbaclad finishes, full range of Colorbond colours and other various prestige metals.

We also offer a fully insulated version known as "Timbaclad Ultra" for energy efficiency and insulation properties.



Characteristics

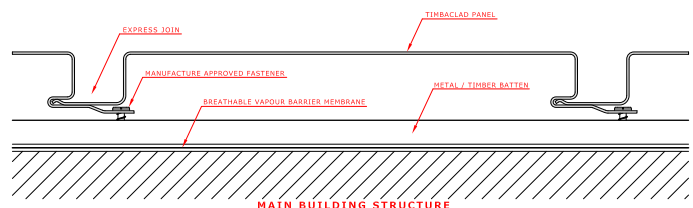
- » Concealed fix cladding system
- » No caulking needed between panels for waterproofing
- » Continuous flush and seamless surface finish
- » Modern and clean appearance

Benefits

- » Low maintenance
- » Cost Effective
- » Ease of installation via a tongue and groove system
- » Allows for natural ventilation to the building
- » 100% recyclable
- » Versatile and lightweight panels
- » Durability of steel
- » Moisture resistant finish
- » Unaffected by termites and insects
- » Suited for Australia's harsh climate

Design & Specification

- » Vertical, horizontal and diagonal laying of panels
- » Fully customised express joint width
- » Fully customised panel width
- » Endless possibilities for implementing design ideas
- » Colour matched accessories and flashing
- » Custom colours and orders available
- » Continuously rollformed long length panels



**ARCHITECTURAL
PANEL SYSTEMS
— AUSTRALIA —**

ARCHITECTURAL GUTTER SYSTEMS

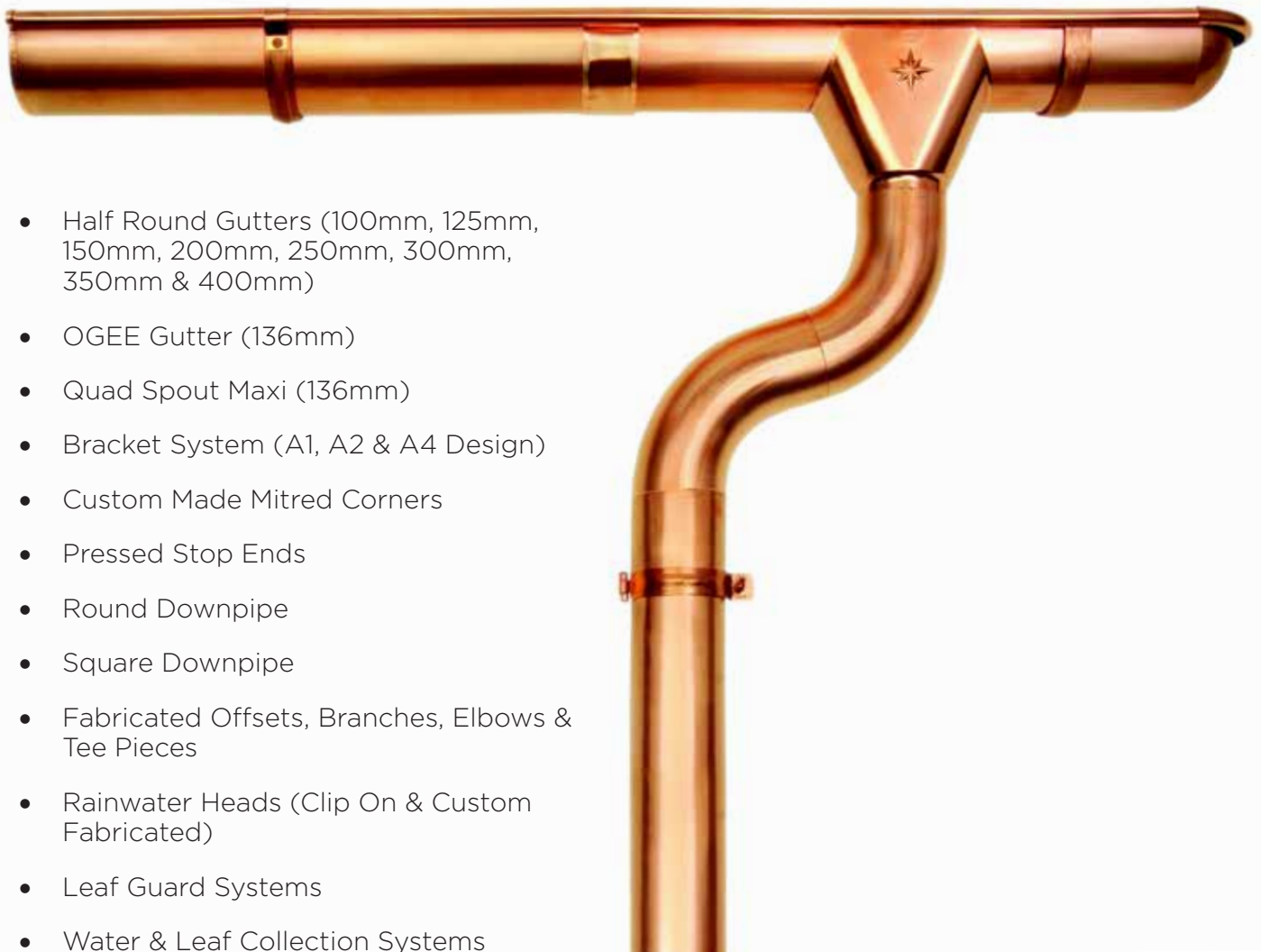
Architectural Panel Systems supply a wide range of Architectural Gutters to the building and construction industry for domestic, commercial and industrial purposes.

Our gutters are unlike any other and available in a range of architectural finishes, ranging from Zincalume right through to Copper.

Each includes it's own bracket, downpipe, rainwater head and more, to make a complete system from gutter to ground, which is clean, timeless and of the highest quality finish.

Our gutters are available in materials listed on Page 3.

Our product range within our gutter systems includes...



- Half Round Gutters (100mm, 125mm, 150mm, 200mm, 250mm, 300mm, 350mm & 400mm)
- OGEE Gutter (136mm)
- Quad Spout Maxi (136mm)
- Bracket System (A1, A2 & A4 Design)
- Custom Made Mitred Corners
- Pressed Stop Ends
- Round Downpipe
- Square Downpipe
- Fabricated Offsets, Branches, Elbows & Tee Pieces
- Rainwater Heads (Clip On & Custom Fabricated)
- Leaf Guard Systems
- Water & Leaf Collection Systems
- Lead Planter Boxes & Motifs

TOOLS & BRACKETS

Architectural Panel Systems offers a wide range of tooling, clips, machinery and brackets to complement our full range of cladding systems.



Standing Seam Brackets

Architectural Panel Systems standing seam brackets are a new and innovative product designed to enhance the comfort, efficiency and safety when working on standing seam and snap lock projects.

The APS standing seam bracket is the only of its kind in the world, strictly designed for standing seam and snap lock roofing and cladding.

We are now able to offer these 2 new brackets into the market, the Ultimate Bracket and the Assister Bracket.

These brackets are both extremely beneficial in their own unique way and we have no doubt once you use these brackets, you will find that the installation of standing seam and snap lock roofing has never been so fast, efficient and comfortable.

This bracket is a great assistant and is suitable for use by roofers, plumbers, cladding installers, solar installers and carpenters.

S5 Brackets

Our range of S-5 clamps attach to the panel, rib or seam of various roofing and cladding profiles by simply tightening the 2 "bullet nosed" stainless steel set screws, against the seam of the panel.

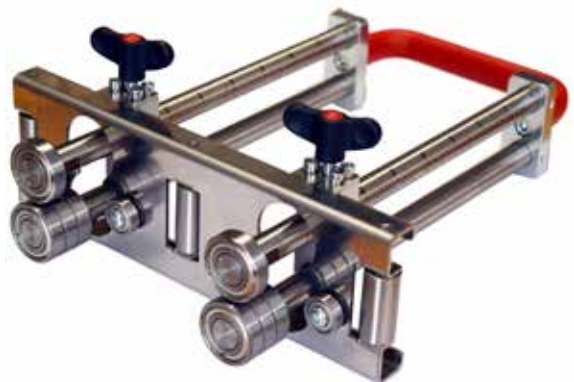
The set screws compress the seam material against the opposite wall of the clamp. They will "dimple" the seam material, but will not penetrate it. Threaded holes in the clamp (and stainless hardware provided) enable the easy attachment of various ancillary items to the clamps, such as signage, solar panels, advertising, cladding panels, rainscreens and more, all providing a concealed look fixing method.

Tools

To assist and enhance the quality and convenience of installation on site, Architectural Panel Systems offers a wide range of tools, for all your roofing and cladding projects.

All our tools are European imported of the highest quality, for the true craftsmen.

This range includes, Seam Closing Tools, Snips, Hammers, Riveters, Folding Tools, Copper & Zinc Tools, WUKO's and more.



**ARCHITECTURAL
PANEL SYSTEMS
AUSTRALIA**



ARCHITECTURAL PANEL SYSTEMS — AUSTRALIA —

Email: info@apsaus.com.au

Phone: 03 5274 9600 | **Mobile:** 0432 590 125 - Jamie Cockerell | **Fax:** 03 5274 9611

Showroom: 6 Kambouris Court, Corio, Victoria 3214

www.apsaus.com.au

